

CODE BLUE

REPLACEMENT PARTS & ACCESSORIES
CATALOG



Code Blue

INSIDE GUIDE

CB1 Series

Page 5

Accessories & replacement parts for CB 1 Series Towers.

CB2 Series

Page 8

Accessories & replacement parts for CB 2 Series Wall Mount enclosures.

CB4 Series

Page 10

Accessories & replacement parts for CB 4 Series Wall Mount enclosures.

CB5 Series

Page 12

Accessories & replacement parts for CB 5 Series Towers.

CB6 Series

Page 14

Accessories & replacement parts for CB 6 Series Speakerphone enclosures.

CB9 Series

Page 16

Accessories & replacement parts for CB 9 Series Towers.

CBRT Series

Page 18

Accessories & replacement parts for CB RT Series Towers.

LS1000

Page 20

Accessories & replacement parts for LS1000 VoIP Faceplate Speakerphones.

LS2000

Page 21

Accessories & replacement parts for LS2000 VoIP Handset Speakerphones.

IP1500/IP1501

Page 22

Accessories & replacement parts for IP1500 & IP1501 VoIP Speakerphones.

IP2500/IP2501

Page 23

Accessories & replacement parts for IP1500 & IP1501 VoIP Speakerphones.

Centry®

Page 24

Accessories & replacement parts for Centry® Speakerphones.

IA4100

Page 25

Accessories & replacement parts for IA4100 Analog Faceplate Speakerphones.

IP5000

Page 26

Accessories & replacement parts for IP5000 Legacy VoIP Speakerphones.

Installation

Page 27

Tools & Components for typical installation of Code Blue products.

Audio Paging

Page 28

Replacement components & accessories for Audio Paging Systems.

Power

Page 29

Replacement parts & service stock items for power systems.

Solar

Page 30

Accessories & replacement parts for solar powered CB 1-w towers.

Networking

Page 31

Structured network components including switches, media converters, & more.

Paint

Page 32

Touch up paint kits & maintenance products for paint finishes.

Lighting

Page 33

Additional lighting options & replacement components compatible with many different Code Blue units.

Communication

Page 34

Project specific communication devices including desk phones & AOR offerings.

COMPONENT UPDATE NOTICE

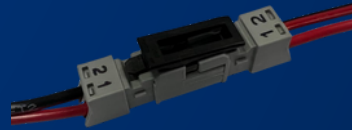
In 2020, Code Blue started phasing out the use of Molded Plug wire connections during production & began utilizing locking Wago Plug & Socket wire connectors. These connectors provide ease of use along with a much more secure & stronger connection than the previous molded plug connectors. We recognize that this may cause some confusion when replacing or upgrading components within Code Blue units produced before this time. As a precautionary measure due to the amount of units that were produced prior to this change, additional Wago conversion kits are being included as standard components in some Code Blue products such as Strobe Kits, Faceplate Lights, and Replacement Area Lights & Strobes. Please utilize this guide when attempting any connection changes within a Code Blue unit.

Comparison

Legacy Molded Plug Connector
used prior to 2020



Wago Plug & Socket Connector
used from 2020 to present



Updating Existing Molded Plug Connections

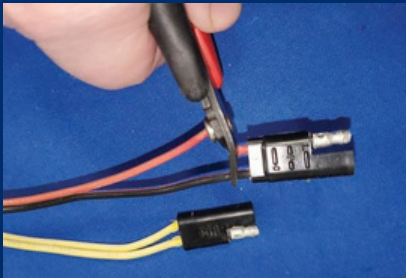
Below are the recommended steps to follow in order to change existing molded plug connections to the plug & socket style.

***Note: Before beginning any of the below steps, ensure the component you are working on is disconnected from any source of power. Use a voltage tester or multimeter to ensure no live electrical current is present.**

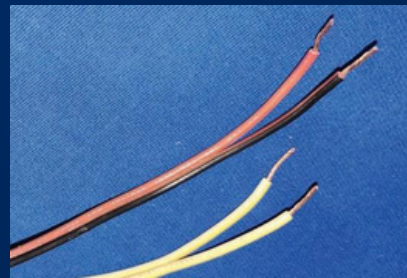
Required Tools: Wire Cutters - Wire Stripper - Small Flat Screwdriver



1- Remove the existing molded plug connections by cutting wires at the base of the connector with wire cutters.



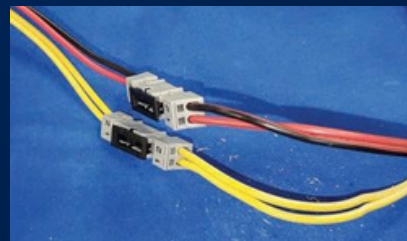
2- Using wire stripper, remove 9mm/0.35" of the wire insulation.
3- Twist the exposed copper wire tightly as shown below.



4- Insert a small flat screwdriver into the square hole of the Wago connector and push down. Keeping the screwdriver pressed down, insert the exposed & twisted wire into the round hole beneath the square hole. Repeat this process as needed until both sides of your connectors are fully terminated.



5- Once all required connectors have been switched, ensure connections are secure & connector lock is engaged to prevent accidental separation. Once confirmed, power can be restored to your unit.



Note: The inclusion of a Wago Conversion Kit is mentioned with many of the products within this catalog to allow for ease of install for units produced both prior to 2020 and after 2020.

Wago Conversion Kits are also available for purchase in bulk via Part # 40035. The kits include the following:

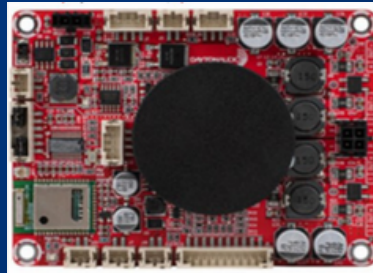
- 15 pcs - 2-pin socket
- 15 pcs - 2-pin plug
- 5 pcs - 3-pin socket
- 5 pcs - 3-pin plugs
- 20 pcs - Locks



COMPONENT UPDATE NOTICE

In 2023, due to global supply chain shortages, Code Blue started phasing out the use of our 120V AC powered Audio Paging Amplifier during production & began utilizing a 12-24V DC. While the change in this component & subsequent configurations created a large change in how the system is powered and installed, it also implements a more flexible and versatile option for our Audio Paging product offerings. When retrofitting or upgrading a Code Blue unit produced prior to 2023, please use this guide to ensure proper functionality of your product.

Current 150W Audio Paging Amplifier



Updating from Legacy PAS Amplifier

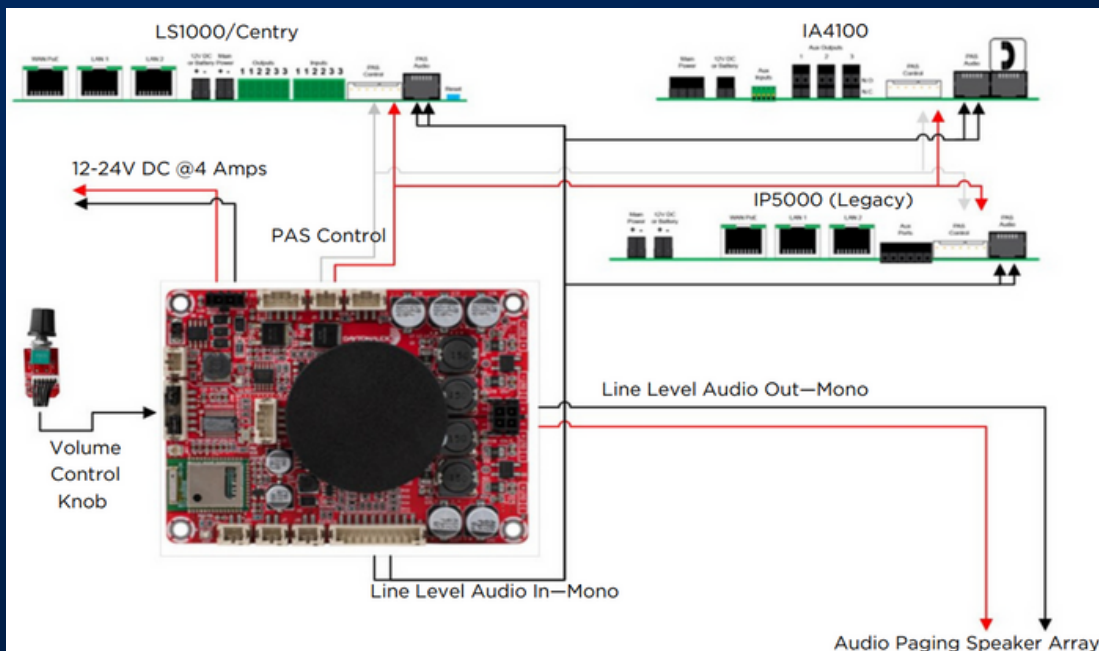
Required Tools: Wire Cutters - Wire Stripper - Phillips Screwdriver - Small Flat Screwdriver



NOTE: Legacy PAS Amp requires 24V AC incoming power. New Amp requires 12-24V DC. Ensure that proper voltage is connected to the newly installed amplifier.

- Remove legacy amplifier and connecting harness.
- Mount new amplifier to the back of the speakerphone with the two screws holding the back cover on.
- Connect the PAS Control Harness and Line Level Audio In(provided with amp) to the speakerphone.
- Connect Line Level Audio Out to the Speaker Array(Harness provided with amp).
- Volume control knob comes pre-installed.
- Connect Power to DIN Rail mounted power transformer leg with 5 amp fuse.

Wiring Diagram



CB1 SERIES

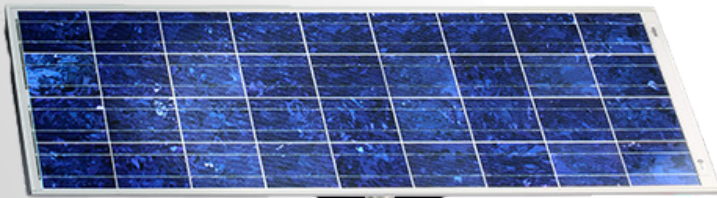
Accessories & Replacement Parts for **CB1** Series Towers

INSTALLATION & SERVICE

Security Bits & Screws

Code Blue's unique security screws provide an extra layer of security to your unit.

- Part # 41414 - 2 Pack of Security Bits
- Part # 41415 - 6 Pack of Security Bits
- Part # 41416 - 1 Security Bit & 1 Driver
- Part # 41417 - 1 Security Bit, 1 Driver, & 6 Countersunk Security Screws
- Part # 41418 - 1 Security Bit, 1 Driver, & 6 Button Head Security Screws
- Part # 41419 - 1 Security Bit, 1 Driver, & 2 Countersunk Security Screws
- Part # 41500 - 3 Button Head Security Screws
- Part # 41544 - 6 Countersunk Security Screws
- Part # 41545 - 2 Countersunk Security Screws



CB 1-e

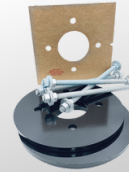
CB 1-w

CB 1-s



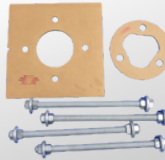
Anchor Bolt Kit

Includes template & anchor bolts.
Part # 40058



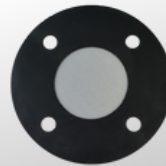
Deck Mount Kit

Includes template, mounting plates, & anchor bolts.
Part # 40215



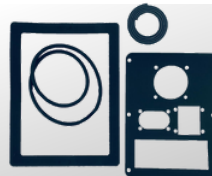
Anchor Epoxy Kit

Template & anchor bolts for install on existing non-Code Blue foundation.
Part # 40344



Pedestal Base Gasket

Gasket used at bottom of tower for pest control.
Part # 41584



Complete Tower Gasket Kit

Gasket kit for full CB1 Tower.
Part # 40209



Access Door Gasket

Gasket for CB1 Tower Access Door.
Part # 40067



Service Plate

Put in place of speakerphone while unit is being serviced.
Part # 40208



Directory Plate Assembly

Replacement stainless steel directory plate assembly. For use in CB 1 towers with dual openings only.
Part # 40057

CB1 SERIES

Accessories & Replacement Parts for CB1 Series Towers

DOMES TOPS & LENSES

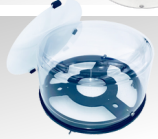
Dome Top Lens with Active Vent

Casting, screws, & gasket.
Part # 40007



Dome Top Assembly

Casting, screws, & gasket.
Part # 40165



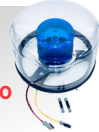
Dome Top Assembly with Active Vent

Casting, screws, gasket, & Active Vent.
Part # 40166



Dome Top Assembly with Strobe

Casting, screws, gasket, & S-1000 Strobe.
Includes Wago Conversion Kit for units produced prior to 2020
Part # 40260



Dome Top Assembly with PhotoCell Strobe

Casting, screws, gasket, & S-1050 Strobe w/
PhotoCell for dawn-to-dusk transition.
Includes Wago Conversion Kit for units produced prior to 2020
Part # 40259



Dome Top Assembly w/Active Vent & PhotoCell Strobe

Casting, screws, gasket, & S-1050 Strobe
& Active Vent Assembly.
Includes Wago Conversion Kit for units produced prior to 2020
Part # 40297



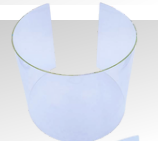
Dome Top Lens

Dome top lens only,
for CB 1-e/s towers.
Part # 41402 - 1 Pack
Part # 41403 - 3 Pack
Part # 41404 - 12 Pack



Area Light HID Lens

Lens for area light, CB1s & CB1w only.
Part # 41410



Area Light HID Lens - 3 Pack

Lens for area light - CB1s & CB1w only.
Part # 41411 - 3 pack



Note: Replacement Area Light Lenses for CB1 Series units must be sealed with industrial grade silicone sealant. This sealant is NOT included with the purchase of a replacement lens.
Recommended option: Dow DOWSIL 732 Multi-Purpose Silicone Sealant

Replacement Active Vent

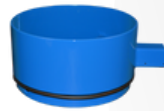
Active vent assembly only for CB1 Tower.
Part # 40072



MOUNTING RINGS

5.25" Mounting Ring

Color	Part #	Color	Part #
Safety Blue	41150	Gloss White	41156
Safety Red	41151	Gloss Black	41157
Safety Yellow	41152	Dk. Bronze	41158
Med. Bronze	41153	Cardinal Red	41159
Midnight Blue	41154	Tiger Orange	41160
British Racing Grn	41155	Bright Silver	41161



5.25" Mounting Ring w/ Antenna Post

Color	Part #	Color	Part #
Safety Blue	41030	Gloss White	41036
Safety Red	41031	Gloss Black	41037
Safety Yellow	41032	Dk. Bronze	41038
Med. Bronze	41033	Tiger Orange	41039
Midnight Blue	41034	Cardinal Red	41160
British Racing Grn	41035	Bright Silver	41161



OVERHEAD CAMERA MOUNT

Overhead Camera Mount

Color	Part #	Color	Part #
Safety Blue	40141	Gloss White	40145
Safety Red	40142	Gloss Black	40146
Safety Yellow	40143	Dk. Bronze	40148
Med. Bronze	40147	Cardinal Red	40150
Midnight Blue	40144	Tiger Orange	40341
British Racing Grn	40149	Bright Silver	40340



CB1 SERIES

Accessories & Replacement Parts for CB1 Series Towers

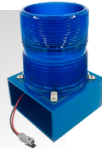
LIGHTING

A-700 Area Light

Replacement Area Light for CB 1-s.

Includes Wago Conversion Kit for units produced prior to 2020

Part # 41539



LED Faceplate Light

Replacement LED Faceplate Light Only.

For use with units produced in 2020 to present.

Part # 41548



LED Faceplate Light Kit

Replacement LED Faceplate light Kit.

Only for use with units produced in 2019 & prior.

Part # 40196



S-1000 Beacon Strobe

Replacement Beacon Strobe only for CB1.

Includes Wago Conversion Kit for units produced prior to 2020

Part # 40159

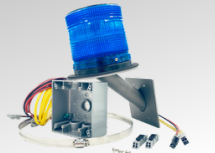


S-1000 Remote Mount Beacon Strobe Kit

Beacon Strobe & Mounting Kit.

Includes Wago Conversion Kit for units produced prior to 2020

Part # 40525



S-1050 Remote Mount Beacon Strobe w/ PhotoCell

Strobe w/ PhotoCell for dawn to dusk transition & Mounting Kit.

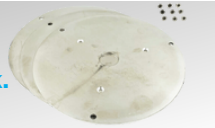
Part # 40528



Strobe Mounting Disk - 3 Pack

Mounting disk for CB1 Series strobes, 3 pack.

Part # 40543



AUDIO PAGING

360° Audio Paging Speaker Array

The 360° Audio Paging Speaker system mounts to the top of a CB 1-e or CB 1-s towers.



Color	Part #	Color	Part #
Safety Blue	42401	Gloss White	42407
Safety Red	42402	Gloss Black	42408
Safety Yellow	42403	Dk. Bronze	42409
Med. Bronze	42404	Cardinal Red	42410
Midnight Blue	42405	Tiger Orange	42412
British Racing Grn	42406	Bright Silver	42411

Note - If retrofitting to an existing tower produced before 2023, please contact [Customer Service](#) to determine proper materials needed to do so.

POWER

Replacement Multi-Tap Power Kit for CB1-e/s

Multi-Tap Transformer 210VA for CB 1-e/s only.

Inputs: 120, 240, 277, & 347V AC

Outputs: 5-24V AC & 5-12V DC

Part # 40104



GRAPHICS

Replacement "Emergency" Graphic

28.5" Replacement Graphic for CB1 Towers.

Graphic Color: White*

Part # 41807 - Set of 2

Emergency

Replacement "Assistance" Graphic

28.5" Replacement Graphic for CB1 Towers.

Graphic Color: White*

Part # 41803 - Set of 2

Assistance

Replacement "Security" Graphic

21" Replacement Graphic for CB1 Towers.

Graphic Color: White*

Part # 41801 - Set of 2

Security

*Other graphic colors and text available. Contact [Code Blue Customer Service](#) for details.

CB2 SERIES

Accessories & Replacement Parts for **CB2 Series Wall Mount Enclosures**

INSTALLATION & SERVICE

Security Bits & Screws

Code Blue's unique security screws provide an extra layer of security to your unit.

Part # 41414 - 2 Pack of Security Bits

Part # 41415 - 6 Pack of Security Bits

Part # 41416 - 1 Security Bit & 1 Driver

Part # 41417 - 1 Security Bit, 1 Driver, & 6 Countersunk Security Screws

Part # 41418 - 1 Security Bit, 1 Driver, & 6 Button Head Security Screws

Part # 41419 - 1 Security Bit, 1 Driver, & 2 Countersunk Security Screws

Part # 41500 - 3 Button Head Security Screws

Part # 41544 - 6 Countersunk Security Screws

Part # 41545 - 2 Countersunk Security Screws



Wall Mount Anchor Kit

Lag bolts, anchors, metal washers, & rubber washers.

Part # 40102



Wall Mount Anchor Kit - 5 Pack

Lag bolts, anchors, metal washers, & rubber washers.

Part # 40520



Pole Mount Kit

Pole mount bracket, banding, & hardware.

Part # 40133

Emergency Help Phone Location Sign

12"x16" Emergency Help Phone w/ Arrow Sign. Includes 6 mounting screws.

Part # 41464



4G/LTE Cellular Router Kit

4G/LTE Cellular Router Kit. Includes router assembly, antennas, & power adaptor.

Part # SLNP0026



Banding Tool

Used along with Pole Mount Kits to secure banding.

Part # 41441 - Banding Tool Only



Banding Tool Kit

Banding Tool, banding, & buckles.

Part # 41442

Contact [Code Blue Customer Service](#) for more options and details to integrate Cellular Communication equipment into Code Blue Enclosures.



Service Plate

Put in place of speakerphone while unit is being serviced.

Part # 40208



CB 2-a



CB 2-ap



CB 2-e

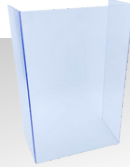


CB 2-s

CB2 SERIES

Accessories & Replacement Parts for **CB2 Series** Wall Mount Enclosures

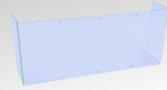
LIGHTS & LENSES



HID Lens for CB 2-s

High Intensity Discharge Lens for CB2-s.

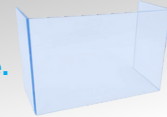
Part # 41412 - 1 Pack
Part # 41413 - 3 Pack



HID Lens for CB 2-a, CB 2-ap, & CB 2-e

High Intensity Discharge Lens for CB2-a/ap/e.

Part # 41164



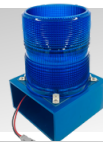
HID Lens for Legacy CB 2-e

High Intensity Discharge Lens for Legacy CB 2-e.

Part # 41425

Note: Replacement Lenses for CB2 Series units must be sealed with industrial grade silicone sealant. This sealant is NOT included with the purchase of a replacement lens.

Recommended option: Dow DOWSIL 732 Multi-Purpose Silicone Sealant



A-700 Area Light

Replacement Area Light for CB 2-s

Part # 41539



LED Faceplate Light

Replacement LED Faceplate Light Only.

For use with units produced in 2020 to present.

Part # 41548

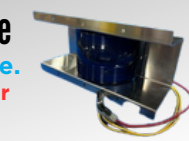


LED Faceplate Light Kit

Replacement LED Faceplate light Kit.

Only for use with units produced in 2019 & prior.

Part # 40196

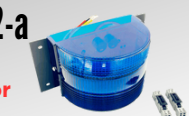


S-2000 180° LED Beacon Strobe for CB 2-a/ap/e

180° LED Beacon Strobe for Current CB 2-a/ap/e.

Includes Wago Conversion Kit for units produced prior to 2020

Part # 40192



S-2000 180° LED Beacon Strobe for Legacy CB 2-a

180° LED Beacon Strobe for Legacy CB 2-a.

Includes Wago Conversion Kit for units produced prior to 2020.

Part # 41162

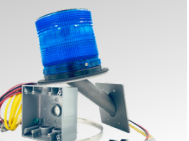


S-1000 Beacon Strobe

Replacement Beacon Strobe only.

Includes Wago Conversion Kit for units produced prior to 2020. For use with CB 2-s Only.

Part # 40159 - Blue Strobe



S-1000 Remote Mount Beacon Strobe Kit

Beacon Strobe & Mounting Kit.

Includes Wago Conversion Kit for units produced prior to 2020

Part # 40525

GRAPHICS

Emergency

Replacement "Emergency" Graphic

20" Replacement Graphic for CB 2-e/s.

Graphic Color: White*

Part # 42507 - Set of 2

Assistance

Replacement "Assistance" Graphic

20" Replacement Graphic for CB 2-e/s.

Graphic Color: White*

Part # 42500 - Set of 2

Emergency

Replacement "Emergency" Graphic

10" Replacement Graphic for CB 2 Series - Front of Unit Only.

Graphic Color: White*

Part # 42507 - Single Graphic

*Other graphic colors and text available. Contact [Code Blue Customer Service](#) for details.

POWER



Replacement Multi-Tap Power Kit for CB 2-s

Multi-Tap Transformer 210VA for CB 2-s only.

Inputs: 120, 240, 277, & 347V AC

Outputs: 5-24V AC & 5-12V DC

Part # 40105



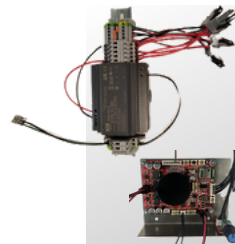
Replacement Multi-Tap Power Kit for CB 2-e

Multi-Tap Transformer 210VA for CB 2-e only.

Inputs: 120, 240, 277, & 347V AC

Outputs: 5-24V AC & 5-12V DC

Part # 40100



Audio Paging Amp & Power System

Replacement Audio Paging Amp & Power System for CB 2-ap units.

If retrofitting or updating a CB 2-e Audio Paging unit produced prior to 2023, please see "Legacy PAS to Current Audio Paging Amp" Instructions.

Contact Technical Support for more details.

Part # 40009

CB4 SERIES

Accessories & Replacement Parts for CB4 Series Wall Mount Enclosures

INSTALLATION & SERVICE

Security Bits & Screws

Code Blue's unique security screws provide an extra layer of security to your unit.

Part # 41414 - 2 Pack of Security Bits

Part # 41415 - 6 Pack of Security Bits

Part # 41416 - 1 Security Bit & 1 Driver

Part # 41417 - 1 Security Bit, 1 Driver, & 6

Countersunk Security Screws

Part # 41418 - 1 Security Bit, 1 Driver, & 6 Button

Head Security Screws

Part # 41419 - 1 Security Bit, 1 Driver, & 2

Countersunk Security Screws

Part # 41500 - 3 Button Head Security Screws

Part # 41544 - 6 Countersunk Security Screws

Part # 41545 - 2 Countersunk Security Screws



Wall Mount Anchor Kit

Lag bolts, anchors, metal washers, & rubber washers.

Part # 40102 - 1 Pack

Part # 40520 - 5 Pack



Pole Mount Kit

Pole mount bracket, banding, & hardware.

Part # 40027 - Stainless

Part # 40030 - Bright Silver w/ Clearcoat



Banding Tool

Used along with Pole Mount Kits to secure banding.

Part # 41441 - Banding Tool Only



Banding Tool Kit

Banding Tool, banding, & buckles.

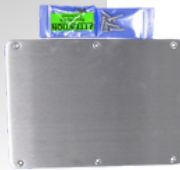
Part # 41442

Replacement Stainless Steel Access Door

Replacement stainless steel access door. Includes security bit & 6 security screws.

For use with CB 4-u Only.

Part # 40657



Directory Plate Assembly

Replacement stainless steel directory plate assembly.

For use in CB 4-s with dual openings only.

Part # 40057



4G/LTE Cellular Router Kit

4G/LTE Cellular Router Kit. Includes router assembly, antennas, & power adaptor.

For use with CB 4-u Only.

Part # SLNP0143



Service Plate

Put in place of speakerphone while unit is being serviced.

Part # 40208



Emergency Help Phone Location Sign

12"x16" Emergency Help Phone w/ Arrow Sign. Includes 6 mounting screws.

Part # 41464

5G Cellular Router Kit

5G Cellular Kit includes 5G router, Wi-Fi/GPS/5G Antennas, mounting brackets, & power assembly.

For use with CB 4-u Only.

Part # SLNP0182



Contact [Code Blue Customer Service](#) for more options and details to integrate Cellular Communication equipment into Code Blue Enclosures.



CB 4-s



CB 4-r



CB 4-u

CB4 SERIES

Accessories & Replacement Parts for CB4 Series Wall Mount Enclosures

LIGHTING

LED Faceplate Light

Replacement LED Faceplate Light Only.
For use with units produced in 2020 to present.
Part # 41548



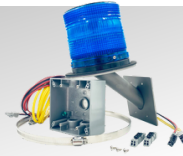
LED Faceplate Light Kit

Replacement LED Faceplate Light Kit.
Only for use with units produced in 2019 & prior.
Part # 40196



S-1000 Remote Mount Beacon Strobe Kit

Beacon Strobe & Mounting Kit.
Includes Wago Conversion Kit for units produced prior to 2020
Part # 40525



S-1050 Remote Mount Beacon Strobe w/ PhotoCell

Strobe w/ PhotoCell for dawn-to-dusk transition & Mounting Kit.
Part # 40528



GRAPHICS

Replacement "Emergency" Graphic

10" Replacement Graphic for CB 4-r/s.
Graphic Color: White*
Part # 40090 - Set of 2

Emergency

Replacement "Emergency" Graphic

20" Replacement Graphic for CB 4-u.
Graphic Color: White*
Part # 42507 - Set of 2

Emergency

Replacement "Assistance" Graphic

20" Replacement Graphic for CB 4-u.
Graphic Color: White*
Part # 42500 - Set of 2

Assistance

*Other graphic colors and text available. Contact [Code Blue Customer Service](#) for details.

MOUNTING OPTIONS



Curb Mount - Single Unit

Single Curb mount for 4 Series - Gloss Black.
Part # 41462 - Standard Paint
Part # 41460 - Clear Coated



Curb Mount - Single Unit

Single Curb mount for 4 Series - Gloss White.
Part # 41466 - Standard Paint



Curb Mount - Dual Unit

Dual Curb mount for 6 Series - Gloss Black.
Part # 40777 - Standard Paint
Part # 40789 - Clear Coated

POWER



Replacement Multi-Tap Power Kit for CB 4-u

Multi-Tap Transformer 210VA for CB 4-u only.
Inputs: 120, 240, 277, & 347V AC
Outputs: 5-24V AC & 5-12V DC
Part # 40104



Replacement 24V Incoming Power Manifold

Power harness for 24V AC incoming power.
For use on CB 4-r/s units produced in 2020 to present only.
Part # 40109

CB5 SERIES

Accessories & Replacement Parts for **CB5 Series Towers**

INSTALLATION & SERVICE

Security Bits & Screws

Code Blue's unique security screws provide an extra layer of security to your unit.

- Part # 41414 - 2 Pack of Security Bits
- Part # 41415 - 6 Pack of Security Bits
- Part # 41416 - 1 Security Bit & 1 Driver
- Part # 41417 - 1 Security Bit, 1 Driver, & 6 Countersunk Security Screws
- Part # 41418 - 1 Security Bit, 1 Driver, & 6 Button Head Security Screws
- Part # 41419 - 1 Security Bit, 1 Driver, & 2 Countersunk Security Screws
- Part # 41500 - 3 Button Head Security Screws
- Part # 41544 - 6 Countersunk Security Screws
- Part # 41545 - 2 Countersunk Security Screws



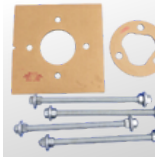
Anchor Bolt Kit

Template & anchor bolts.
Part # 40060



Deck Mount Kit

Template, mounting plates, & anchor bolts.
Part # 40063



Anchor Epoxy Kit

Template & anchor bolts for install on existing non-Code Blue foundation.
Part # 40344

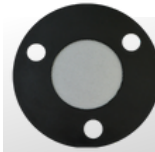
4G/LTE Cellular Router Kit

4G/LTE Cellular Router Kit. Includes router assembly, antennas, & power adaptor.

- Part # SLNP0150 - For CB 5-s
- Part # SLNP0151 - For CB 5-p



Contact [Code Blue Customer Service](#) for more options and details to integrate Cellular Communication equipment into Code Blue Enclosures.



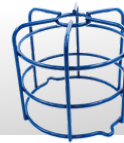
Pedestal Base Gasket

Gasket used at bottom of tower for pest control.
Part # 41586



Service Plate

Put in place of speakerphone while unit is being serviced.
Part # 40208



Strobe Protective Guard

Steel guard for CB5 Series strobes.
Part # 44022



CB 5-s



CB 5-p

360° Audio Paging Speaker Array

The 360° Audio Paging Speaker system mounts to the top of a CB 5-s towers.



Color	Part #	Color	Part #
Safety Blue	42451	Gloss White	42457
Safety Red	42452	Gloss Black	42458
Safety Yellow	42453	Dk. Bronze	42459
Med. Bronze	42454	Cardinal Red	42460
Midnight Blue	42455	Tiger Orange	42462
British Racing Grn	42456	Bright Silver	42461

Note - If retrofitting to an existing tower produced before 2023, please contact [Customer Service](#) to determine proper materials needed to do so.

CB5 SERIES

Accessories & Replacement Parts for **CB5 Series Towers**

OVERHEAD CAMERA MOUNT

Overhead Camera Mount - Side Mount

Color	Part #	Color	Part #
Safety Blue	40612	Gloss White	40616
Safety Red	40610	Gloss Black	40617
Safety Yellow	40611	Dk. Bronze	40618
Med. Bronze	40614	Cardinal Red	40619
Midnight Blue	40613	Tiger Orange	40621
British Racing Grn	40615	Bright Silver	40620



LIGHTING

Strobe Gasket

Gasket for CB5 Series strobes.
Part # 41623 - 1 Pack
Part # 40541 - 6 Pack



Strobe Mounting Disk - 3 Pack

Mounting disk for CB5 Series strobes, 3 pack.
Part # 40543



Strobe with Gasket Kit

Strobe, mounting disk, gasket, & hardware for CB5.
Includes Wago Conversion Kit for units produced prior to 2020
Part # 40687



S-1000 Beacon Strobe

Replacement Beacon Strobe only for CB5.
Includes Wago Conversion Kit for units produced prior to 2020
Part # 40159



LED Faceplate Light Kit

Replacement LED Faceplate light Kit.
Only for use with units produced in 2019 & prior.
Part # 40196



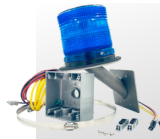
LED Faceplate Light

Replacement LED Faceplate Light Only.
For use with units produced in 2020 to present.
Part # 41548



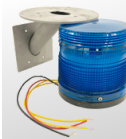
S-1000 Remote Mount Beacon Strobe Kit

Beacon Strobe & Mounting Kit.
Includes Wago Conversion Kit for units produced prior to 2020
Part # 40525



S-1050 Remote Mount Beacon Strobe w/ PhotoCell

Strobe w/ PhotoCell for dawn to dusk transition & Mounting Kit.
Part # 40528



GRAPHICS

Replacement "Emergency" Graphic

20" Replacement Graphic for CB 5-p.
Graphic Color: White*
Part # 42507 - Set of 2

Emergency

Replacement "Assistance" Graphic

20" Replacement Graphic for CB 5-p.
Graphic Color: White*
Part # 42500 - Set of 2

Assistance

Replacement "Emergency" Graphic

28.5" Replacement Graphic for CB 5-s.
Graphic Color: White*
Part # 41807 - Set of 2

Emergency

Replacement "Assistance" Graphic

28.5" Replacement Graphic for CB 5-s.
Graphic Color: White*
Part # 41803 - Set of 2

Assistance

Replacement "Security" Graphic

21" Replacement Graphic for CB 5-s.
Graphic Color: White*
Part # 41801 - Set of 2

Security

*Other graphic colors and text available. Contact [Code Blue Customer Service](#) for details.

POWER

Replacement Multi-Tap Power Kit

Multi-Tap Transformer 210VA for CB 5 towers.
Inputs: 120, 240, 277, & 347V AC
Outputs: 5-24V AC & 5-12V DC
Part # 40100



CB6 SERIES

Accessories & Replacement Parts for **CB6** Series Speakerphone Enclosures

INSTALLATION & SERVICE

Security Bits & Screws

Code Blue's unique security screws provide an extra layer of security to your unit.

- Part # 41414 - 2 Pack of Security Bits
- Part # 41415 - 6 Pack of Security Bits
- Part # 41416 - 1 Security Bit & 1 Driver
- Part # 41417 - 1 Security Bit, 1 Driver, & 6 Countersunk Security Screws
- Part # 41418 - 1 Security Bit, 1 Driver, & 6 Button Head Security Screws
- Part # 41419 - 1 Security Bit, 1 Driver, & 2 Countersunk Security Screws
- Part # 41500 - 3 Button Head Security Screws
- Part # 41544 - 6 Countersunk Security Screws
- Part # 41545 - 2 Countersunk Security Screws



Wall Mount Anchor Kit

Lag bolts, anchors, metal washers, & rubber washers.

- Part # 40102 - 1 Pack
- Part # 40520 - 5 Pack



Pole Mount Kit

Pole mount bracket, banding, & hardware.

- Part # 40027 - Stainless
- Part # 40030 - Bright Silver w/ Clearcoat



Banding Tool

Used along with Pole Mount Kits to secure banding.

- Part # 41441 - Banding Tool Only



Banding Tool Kit

Banding Tool, banding, & buckles.

- Part # 41442



4G/LTE Cellular Router Kit

4G/LTE Cellular Router Kit. Includes router assembly, antennas, & power adaptor.

For use in CB 6-s Only, requires 12-24V DC power.

- Part # SLNP0026



Contact [Code Blue Customer Service](#) for more options and details to integrate Cellular Communication equipment into Code Blue Enclosures.

Service Plate

Put in place of speakerphone while unit is being serviced.

- Part # 40208



CB 6-s

*Shown with LS1000 installed



CB 6-f

*Shown with LS1000 installed

CB6 SERIES

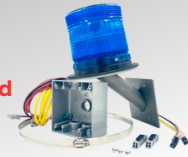
Accessories & Replacement Parts for **CB6** Series Speakerphone Enclosures

LIGHTING

S-1050 Remote Mount Beacon Strobe w/ PhotoCell
Strobe w/ PhotoCell for dawn to dusk transition
& Mounting Kit.
Part # 40528



S-1000 Remote Mount Beacon Strobe Kit
Beacon Strobe & Mounting Kit.
Includes Wago Conversion Kit for units produced
prior to 2020
Part # 40525



GRAPHICS

Replacement "Emergency" Graphic

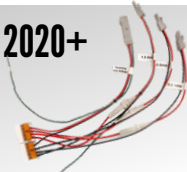
10" Replacement Graphic for CB 6-s.
Graphic Color: White*
Part # 40090 - Set of 2

Emergency

*Other graphic colors and text available. Contact [Code Blue Customer Service](#) for details.

POWER

Replacement 24V Incoming Power Manifold - 2020+
Power harness for 24V AC incoming power.
For use on CB6 Series units produced in 2020 to
present only.
Part # 40109



PoE Splitter Assembly - Non-DIN Rail

PoE Splitter Assembly with Mounting Plate
for Non-DIN Rail Power Systems.
Part # 41574



MOUNTING OPTIONS



Curb Mount - Single Unit

Single Curb mount for 6 Series - Gloss Black.
For use with CB 6-s Only.
Part # 41462 - Standard Paint
Part # 41460 - Clear Coated



Curb Mount - Single Unit

Single Curb mount for 6 Series - Gloss White.
For use with CB 6-s Only.
Part # 41466 - Standard Paint



Curb Mount - Dual Unit

Dual Curb mount for 6 Series - Gloss Black.
For use with CB 6-s Only.
Part # 40777 - Standard Paint
Part # 40789 - Clear Coated



Replacement Flush Mount Enclosure

CB 6-f Flush Mount Enclosure - Black.
Part # 41543



Emergency Help Phone Location Sign

12"x16" Emergency Help Phone w/ Arrow Sign.
Includes 6 mounting screws.
Part # 41464

CB9 SERIES

Accessories & Replacement Parts for **CB9** Series Towers

INSTALLATION & SERVICE

Security Bits & Screws

Code Blue's unique security screws provide an extra layer of security to your unit.

Part # 41414 - 2 Pack of Security Bits

Part # 41415 - 6 Pack of Security Bits

Part # 41416 - 1 Security Bit & 1 Driver

Part # 41417 - 1 Security Bit, 1 Driver, & 6

Countersunk Security Screws

Part # 41418 - 1 Security Bit, 1 Driver, & 6 Button Head Security Screws

Part # 41419 - 1 Security Bit, 1 Driver, & 2

Countersunk Security Screws

Part # 41500 - 3 Button Head Security Screws

Part # 41544 - 6 Countersunk Security Screws

Part # 41545 - 2 Countersunk Security Screws



4G/LTE Cellular Router Kit

4G/LTE Cellular Router Kit. Includes router assembly, antennas, & power adaptor.

Part # SLNP0153



CB 9-t

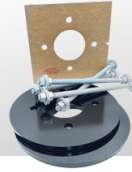


CB 9-s



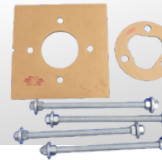
Anchor Bolt Kit

Template & anchor bolts.
Part # 40058



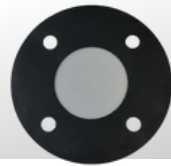
Deck Mount Kit

Template, mounting plates, & anchor bolts.
Part # 40215



Anchor Epoxy Kit

Template & anchor bolts For install on existing non-Code Blue foundation.
Part # 40344



Pedestal Base Gasket

Gasket used at bottom of tower for pest control.
Part # 41584



Overhead Camera Mount Gasket

Side mount overhead camera mount gasket, 3 pack.
Part # 41629



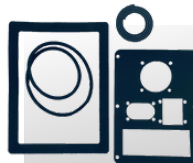
Access Door Gasket

Gasket for CB9 Tower Access Door.
Part # 40067



Service Plate

Put in place of speakerphone while unit is being serviced.
Part # 40208



Complete Tower Gasket Kit

Gasket kit for full CB9 Tower.
Part # 40209



Directory Plate Assembly

Replacement stainless steel directory plate assembly. For use in CB 9 towers with dual openings only.
Part # 40057

CB9 SERIES

Accessories & Replacement Parts for **CB9** Series Towers

OVERHEAD CAMERA MOUNT

Overhead Camera Mount - Side Mount

Color	Part #	Color	Part #
Safety Blue	40612	Gloss White	40616
Safety Red	40610	Gloss Black	40617
Safety Yellow	40611	Dk. Bronze	40618
Med. Bronze	40614	Cardinal Red	40619
Midnight Blue	40613	Tiger Orange	40621
British Racing Grn	40615	Bright Silver	40620



LIGHTING



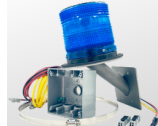
LED Faceplate Light Kit

Replacement LED Faceplate light Kit.
Only for use with units produced in 2019 & prior.
Part # 40196



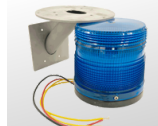
LED Faceplate Light

Replacement LED Faceplate Light Only.
For use with units produced in 2020 to present.
Part # 41548



S-1000 Remote Mount Beacon Strobe Kit

Beacon Strobe & Mounting Kit.
Includes Wago Conversion Kit for units produced prior to 2020
Part # 40525



S-1050 Remote Mount Beacon Strobe w/ PhotoCell

Strobe w/ PhotoCell for dawn to dusk transition & Mounting Kit.
Part # 40528

POWER

Replacement Multi-Tap Power Kit for CB9-s/t

Multi-Tap Transformer 210VA for CB 9-s/t only.
Inputs: 120, 240, 277, & 347V AC
Outputs: 5-24V AC & 5-12V DC
Part # 40104



GRAPHICS

Replacement "Emergency" Graphic

28.5" Replacement Graphic for CB9 Towers.
Graphic Color: White*
Part # 41807 - Set of 2

Emergency

Replacement "Assistance" Graphic

28.5" Replacement Graphic for CB9 Towers.
Graphic Color: White*
Part # 41803 - Set of 2

Assistance

Replacement "Security" Graphic

21" Replacement Graphic for CB9 Towers.
Graphic Color: White*
Part # 41801 - Set of 2

Security

*Other graphic colors and text available. Contact [Code Blue Customer Service](#) for details.

CB-RT SERIES

Accessories & Replacement Parts for **CBRT** Series Towers

INSTALLATION & SERVICE

Security Bits & Screws

Code Blue's unique security screws provide an extra layer of security to your unit.

Part # 41414 - 2 Pack of Security Bits

Part # 41415 - 6 Pack of Security Bits

Part # 41416 - 1 Security Bit & 1 Driver

Part # 41417 - 1 Security Bit, 1 Driver, & 6

Countersunk Security Screws

Part # 41418 - 1 Security Bit, 1 Driver, & 6 Button Head Security Screws

Part # 41419 - 1 Security Bit, 1 Driver, & 2

Countersunk Security Screws

Part # 41500 - 3 Button Head Security Screws

Part # 41544 - 6 Countersunk Security Screws

Part # 41545 - 2 Countersunk Security Screws



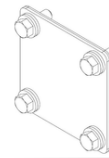
Anchor Bolt Kit

Template & anchor bolts.
Part # 40059



Deck Mount Kit

Template, mounting plates, & anchor bolts.
Part # 40352



Camera Mount Cover Plate

Used when not utilizing overhead camera mount.

Part # 40112 - 1 Pack
Part # 40113 - 3 Pack



Overhead Camera Mount Gasket

Side mount overhead camera mount gasket, 3 pack.
Part # 41629



Service Plate

Put in place of speakerphone while unit is being serviced.

Part # 40208

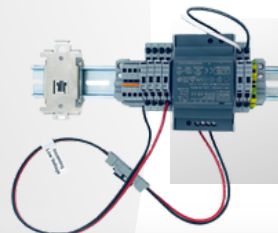


Strobe Mounting Disk - 3 Pack

Mounting disk for CBRT Series strobes, 3 pack.

Part # 40543

POWER



Replacement Standard DIN Rail Power System

Standard DIN Rail Power Assembly
120-277V AC Incoming Power.

Part # 40110



CB RT

CB-RT SERIES

Accessories & Replacement Parts for **CBRT** Series Towers

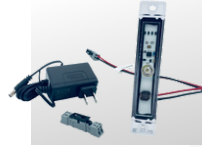
OVERHEAD CAMERA MOUNT

Overhead Camera Mount

Color	Part #	Color	Part #
Safety Blue	40320	Gloss White	40323
Safety Red	40321	Gloss Black	40324
Safety Yellow	40322	Dk. Bronze	40325
Med. Bronze	40328	Cardinal Red	40254
Bright Silver	40326		



LIGHTING



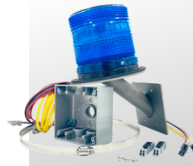
LED Faceplate Light Kit

Replacement LED Faceplate Light Kit.
Only for use with units produced in 2019 & prior.
Part # 40196



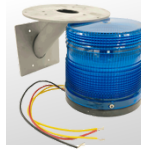
LED Faceplate Light

Replacement LED Faceplate Light Only.
For use with units produced in 2020 to present.
Part # 41548



S-1000 Remote Mount Beacon Strobe Kit

Beacon Strobe & Mounting Kit.
Includes Wago Conversion Kit for units produced prior to 2020
Part # 40525



S-1050 Remote Mount Beacon Strobe w/ PhotoCell

Strobe w/ PhotoCell for dawn to dusk transition & Mounting Kit.
Part # 40528



S-1000 Beacon Strobe

Replacement Beacon Strobe only for CBRT.
Includes Wago Conversion Kit for units produced prior to 2020
Part # 40159

GRAPHICS

Replacement "Emergency" Graphic

28.5" Replacement Graphic for CBRT Towers.
Graphic Color: White*
Part # 41807 - Set of 2

Emergency

Replacement "Assistance" Graphic

28.5" Replacement Graphic for CBRT Towers.
Graphic Color: White*
Part # 41803 - Set of 2

Assistance

Replacement "Security" Graphic

21" Replacement Graphic for CBRT Towers.
Graphic Color: White*
Part # 41801 - Set of 2

Security

*Other graphic colors and text available. Contact [Code Blue Customer Service](#) for details.

SPEAKERPHONES

LS1000

Accessories & Replacement Parts for LS1000 VoIP Faceplate Speakerphone

INSTALLATION & SERVICE

Security Bits & Screws

Code Blue's unique security screws provide an extra layer of security to your unit.

- Part # 41414 - 2 Pack of Security Bits
- Part # 41415 - 6 Pack of Security Bits
- Part # 41416 - 1 Security Bit & 1 Driver
- Part # 41417 - 1 Security Bit, 1 Driver, & 6 Countersunk Security Screws
- Part # 41544 - 6 Countersunk Security Screws



Step-Down 24V AC to 12V DC Transformer

For use when upgrading Legacy IP5000 Speakerphone to LS1000 Speakerphone.

Part # 41642



Replacement Large Bezel Assembly

"Push for Help" Bezel Assembly for IP Phones. Includes bezel, backer, gasket, call button, & wiring.

Color: Red Text, White Bezel*

Part # 40103



Replacement Small Bezel Assembly

"Info" Bezel Assembly for IP Phones. Includes bezel, backer, gasket, call button, & wiring.

Color: Black Text, White Bezel*

Part # 40013



*Other bezel colors and text options available. Contact Code Blue Customer Service for details.



Replacement Backup Battery

12V 2.0Ah SLA Backup Battery for LS1000.

Part # 42506 - 1 Pack

Part # 41465 - 3 Pack

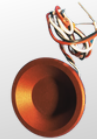


Replacement Large Red Call Button - Recessed

38mm Recessed Call Button for IP Phones.

Part # 41450 - 3 Pack

Part # 41451 - 1 Pack



Replacement Large Red Call Button - Raised

38mm Raised Call Button for IP Phones.

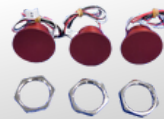
Part # 41423 - 3 Pack



Replacement Large Red Call Button - Flat

38mm Flat Call Button for IP Phones.

Part # 41467 - 3 Pack



Replacement Small Black Call Button - Flat

28mm Flat Call Button for IP Phones.

Part # 41468 - 3 Pack



Replacement Keypad

12 Digit Alphanumeric Keypad.

Part # 40191



Speakerphone Gasket

Faceplate Speakerphone Gasket, 5 Pack.

Part # 40098



Replacement IP Surge Protection

Surge Protector for IP Speakerphones.

Part # 41421 - 1 Pack

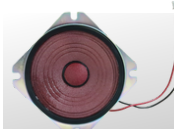
Part # 41422 - 3 Pack



Replacement Speaker Kit

3.5" (89mm) Waterproof Speaker.

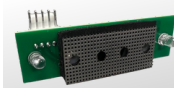
Part # 40064 - 3 Pack



Replacement Microphone Assembly

Microphone Assembly for LS1000.

Part # 40354



Flush Mount Trim Ring Kit

Flush Mount Trim Ring kit for LS1000 speakerphone. Includes speakerphone gasket. Use along with CB 6-f flush mount back box.

Part # 41595 - Stainless Steel

Part # 41597 - Bright Silver w/ Clear Coat



SPEAKERPHONES

LS2000

Accessories & Replacement Parts for **LS2000** VoIP Handset Speakerphone

INSTALLATION & SERVICE

Security Bits & Screws

Code Blue's unique security screws provide an extra layer of security to your unit.

- Part # 41414 - 2 Pack of Security Bits
- Part # 41415 - 6 Pack of Security Bits
- Part # 41416 - 1 Security Bit & 1 Driver
- Part # 41417 - 1 Security Bit, 1 Driver, & 6 Countersunk Security Screws
- Part # 41544 - 6 Countersunk Security Screws



Replacement Keypad
12 Digit Alphanumeric Keypad.
Part # 40191



Replacement IP Surge Protection
Surge Protector for IP Speakerphones.
Part # 41421 - 1 Pack
Part # 41422 - 3 Pack

Flush Mount Trim Ring Kit

Flush Mount Trim Ring kit for LS2000 speakerphone. Includes speakerphone gasket. Use along with CB 6-f flush mount back box.

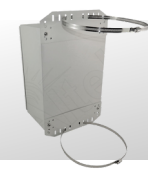
- Part # 41595 - Stainless Steel
- Part # 41597 - Bright Silver w/ Clear Coat



NEMA 4X Enclosure
16"x12"x8" NEMA 4X Enclosure for LS2000 Handset Phone.
Part # 40048

Flush Mount Enclosure

CB 6-f Flush Mount Enclosure - Black.
Part # 41543



NEMA 4X Enclosure Pole Mount Kit
Includes NEMA 4X enclosure & pole mount banding.
Part # 40585



Curb Mount for NEMA 4X Enclosure
Car height curb mount stand for NEMA 4X enclosure.
Part # 41089



4G/LTE Enclosure for Handset Phone
Includes NEMA 4X enclosure, router kit, antenna assembly, lockable handle, & mounting brackets.
For use with LS2000 handset phone only.
Part # SLNP0178

Contact [Code Blue Customer Service](#) for more options and details to integrate Cellular Communication equipment into Code Blue Enclosures.

SPEAKERPHONES

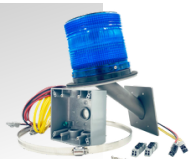
IP1500/IP1501

Accessories & Replacement Parts for IP1500/IP1501 VoIP Speakerphone

INSTALLATION & SERVICE

S-1000 Remote Mount Beacon Strobe Kit

Beacon Strobe & Mounting Kit.
Includes Wago Conversion Kit for units produced prior to 2020
Part # 40525



Faceplate Screws for IP2500/2501

Tamper Resistant Torx Screws.
Part # 40004 - 4 Pack



S-1050 Remote Mount Beacon Strobe w/ PhotoCell

Strobe w/ PhotoCell for dawn to dusk transition & Mounting Kit.
Part # 40528



Replacement Bezel Overlay

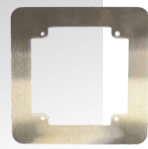
"Push for Help" Bezel Overlay.
Color: Red Text, White Bezel *
Part # 40049



*Other bezel colors and text options available. Contact Code Blue Customer Service for details.

Flush Mount Trim Ring Kit

Stainless Steel Flush Mount Trim Ring kit for IP1501 speakerphone only.
Part # 41637



Surface Mounting Kit

Surface Mount Kit for IP1500. Bracket, gasket & 3 spanner screws.
Part # 40037



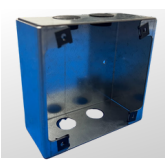
Emergency Help Phone Location Sign

12"x16" Emergency Help Phone w/ Arrow Sign. Includes 6 mounting screws.
Part # 41464



Replacement Flush Mount Box

Stainless steel replacement back box for IP1501 speakerphone only.
Part # 40069




SPEAKERPHONES

IP2500/IP2501


Accessories & Replacement Parts for IP2500/IP2501 VoIP Speakerphone

INSTALLATION & SERVICE

Faceplate Screws for IP2500/2501
 Tamper Resistant Torx Screws.
 Part # 40004 - 4 Pack



Replacement Large Red Call Button
 38mm Recessed Call Button for IP Phones.
 Part # 41450 - 3 Pack
 Part # 41451 - 1 Pack



Replacement Speaker Kit
 3.5" (89mm) Waterproof Speaker.
 Part # 41713 - 3 Pack



Replacement Large Bezel Assembly
 "Push for Help" Bezel Assembly for IP Phones.
 Includes bezel, backer, gasket, call button, & wiring.
 Color: Red Text, White Bezel
 Part # 40103



Replacement Small Bezel Assembly
 "Info" Bezel Assembly for IP Phones. Includes bezel, backer, gasket, call button, & wiring.
 Color: Black Text, White Bezel
 Part # 40013
 *Other bezel colors and text options available. Contact [Code Blue Customer Service](#) for details.



Flush Mount Trim Ring Kit
 Flush Mount Trim Ring kit for IP2501 speakerphone only.
 Part # 41594 - Stainless Steel
 Part # 41596 - Bright Silver w/ Clear Coat




LIGHTING

S-1000 Remote Mount Beacon Strobe Kit
 Beacon Strobe & Mounting Kit.
 Includes Wago Conversion Kit for units produced prior to 2020
 Part # 40525



S-1050 Remote Mount Beacon Strobe w/ PhotoCell
 Strobe w/ PhotoCell for dawn to dusk transition & Mounting Kit.
 Part # 40528



MOUNTING OPTIONS

Curb Mount - Single Unit
 Single Curb mount for IP2500 - Gloss Black.
 Part # 41461 - Standard Paint
 Part # 41575 - Clear Coated



Curb Mount - Dual Unit
 Dual Curb mount for IP2500 - Gloss Black.
 Part # 41576 - Standard Paint
 Part # 41577 - Clear Coated




SPEAKERPHONES

Centry®

Accessories & Replacement Parts for Centry® VoIP Speakerphone

INSTALLATION & SERVICE

Faceplate Screws for Centry Phone

Tamper Resistant Torx Screws for Centry® Faceplate.

Part # 40004 - 4 Pack



Surface Mount Box Centry Phone

Surface mount back box enclosure for Centry® Phones.

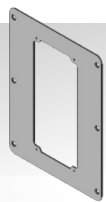
Part # 40114



Centry Stainless Steel Trim Ring Adapter

Trim ring to integrate Centry® flush mount phone into Code Blue tower or wall mount enclosure.

Part # 40002



Emergency Help Phone Location Sign

12"x16" Emergency Help Phone w/ Arrow Sign. Includes 6 mounting screws.

Part # 41464



MOUNTING OPTIONS



Curb Mount - Single Unit

Single Curb mount for Centry® - Gloss Black.

Part # 41461 - Standard Paint

Part # 41575 - Clear Coated



Curb Mount - Dual Unit

Dual Curb mount for Centry® - Gloss Black.

Part # 41576 - Standard Paint

Part # 41577 - Clear Coated



Centry®
Surface Mount



Centry®
Flush Mount

SPEAKERPHONES

IA4100

Accessories & Replacement Parts for IA4100 Analog Faceplate Speakerphone

INSTALLATION & SERVICE

Security Bits & Screws

Code Blue's unique security screws provide an extra layer of security to your unit.

- Part # 41414 - 2 Pack of Security Bits
- Part # 41415 - 6 Pack of Security Bits
- Part # 41416 - 1 Security Bit & 1 Driver
- Part # 41417 - 1 Security Bit, 1 Driver, & 6 Countersunk Security Screws
- Part # 41544 - 6 Countersunk Security Screws



Replacement Large Bezel Assembly

"Push for Help" Bezel Assembly for Analog Phones. Includes bezel, backer, gasket, call button, & wiring.

Color: Red Text, White Bezel
Part # 40357



Replacement Small Bezel Assembly

"Info" Bezel Assembly for Analog Phones. Includes bezel, backer, gasket, call button, & wiring.

Color: Black Text, White Bezel
Part # 40956



*Other bezel colors and text options available. Contact [Code Blue Customer Service](#) for details.

Replacement Backup Battery



12V 2.0Ah SLA Backup Battery for IA4100.
Part # 40006 - 1 Pack
Part # 41465 - 3 Pack



Replacement Large Red Call Button - Recessed
38mm Red Recessed Call Button for Analog Phones.

Part # 41469 - 3 Pack



Replacement Small Black Call Button - Recessed
28mm Black Recessed Call Button for Analog Phones.

Part # 41470 - 3 Pack



Replacement Keypad

12 Digit Alphanumeric Keypad.
Part # 40191



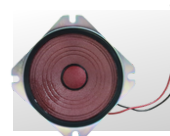
Speakerphone Gasket

Faceplate Speakerphone Gasket, 5 Pack.
Part # 40098

Replacement Analog Surge Protection

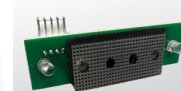


Surge Protector for Analog Speakerphones.
Part # 41471 - 1 Pack
Part # 41472 - 3 Pack



Replacement Speaker Kit

3.5" (89mm) Waterproof Speaker.
Part # 40064 - 3 Pack



Replacement Microphone Assembly

Microphone Assembly for IA4100.
Part # 40354

Flush Mount Trim Ring Kit

Flush Mount Trim Ring kit for IA4100 speakerphone. Includes speakerphone gasket. Use along with CB 6-f flush mount back box.

Part # 41595 - Stainless Steel
Part # 41597 - Bright Silver w/ Clear Coat



SPEAKERPHONES

IP5000 (Legacy Product)

Accessories & Replacement Parts for IP5000 VoIP Faceplate Speakerphone

Please note, as of 8/15/2022, the IP5000 model of speakerphone has been discontinued and replaced with the LS1000 model. Complete IP5000 speakerphones are no longer available for purchase or exchange through our RMA process. For complete replacement options, please see LS1000 speakerphone. Products below are subject to limited availability based on discontinuation of this model.

INSTALLATION & SERVICE

Security Bits & Screws

Code Blue's unique security screws provide an extra layer of security to your unit.

- Part # 41414 - 2 Pack of Security Bits
- Part # 41415 - 6 Pack of Security Bits
- Part # 41416 - 1 Security Bit & 1 Driver
- Part # 41417 - 1 Security Bit, 1 Driver, & 6 Countersunk Security Screws
- Part # 41544 - 6 Countersunk Security Screws



Replacement Large Bezel Assembly

"Push for Help" Bezel Assembly for IP Phones. Includes bezel, backer, gasket, call button, & wiring.

Color: Red Text, White Bezel*
Part # 40103



Replacement Small Bezel Assembly

"Info" Bezel Assembly for IP Phones. Includes bezel, backer, gasket, call button, & wiring.

Color: Black Text, White Bezel*
Part # 40013



*Other bezel colors and text options available. Contact Code Blue Customer Service for details.



Replacement Backup Battery

12V 2.0Ah SLA Backup Battery for IP5000.
Part # 40006 - 1 Pack
Part # 41465 - 3 Pack



Replacement Large Red Call Button - Flat

38mm Flat Call Button for IP Phones.
Part # 41467 - 3 Pack



Replacement Small Black Call Button - Flat

28mm Flat Call Button for IP Phones.
Part # 41468 - 3 Pack



Replacement Keypad

12 Digit Alphanumeric Keypad.
Part # 40191



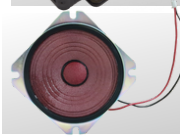
Speakerphone Gasket

Faceplate Speakerphone Gasket, 5 Pack.
Part # 40098



Replacement IP Surge Protection

Surge Protector for IP Speakerphones.
Part # 41421 - 1 Pack
Part # 41422 - 3 Pack



Replacement Speaker Kit

3.5" (89mm) Waterproof Speaker.
Part # 40064 - 3 Pack



Flush Mount Trim Ring Kit

Flush Mount Trim Ring kit for IP5000 speakerphone. Includes speakerphone gasket. Use along with CB 6-f flush mount back speakerphone. Includes speakerphone gasket. Use along with CB 6-f flush mount back box.
Part # 41595 - Stainless Steel
Part # 41597 - Bright Silver w/ Clear Coat

INSTALLATION

AED Components

Replacement AED Latch Assembly

Replacement latch assembly for CB1 & CB2 AED Units.

Part # 41104



Replacement AED Heater

Replacement heater for CB1 & CB2 AED Units.

Part # 41105



Replacement AED Thermostat

Replacement thermostat for CB1 & CB2 AED Units.

Part # 41106

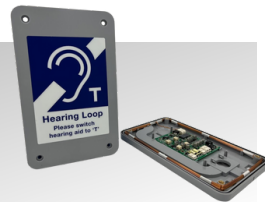


Hearing Loop

Indoor/Outdoor All-In-One Panel Kit

Stand alone all-in-one panel can be used with any Code Blue unit. Suitable for indoor & outdoor use.

Part # SLNP0165



Hearing Loop Kit - Wall Mount Enclosures

Field kit designed to be integrated with new or existing Code Blue Wall Mount Enclosures. Includes hearing loop driver, loop cable, magnetic mounts, inline cable splice, & hearing loop decal.

Part # SLNP0164



Hearing Loop Kit - Towers

Field kit designed to be integrated with new or existing Code Blue Tower Enclosures. Includes hearing loop driver, loop cable, magnetic mounts, inline cable splice, & hearing loop decal.

Part # SLNP0163



Hearing Loop Field Meter

Field meter to test Hearing Loop kit functionality & signal carrying.

Includes carrying case & headphones.

Part # SLNP0166



Tools & Hardware

Banding Tool

Used along with Pole Mount Kits to secure banding.

Part # 41441 - Banding Tool Only



Banding Tool Kit

Banding Tool, banding, & buckles.

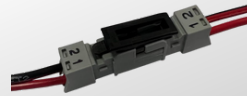
Part # 41442



Wago Connection Conversion Kit

Kit to swap out legacy molded plug connections produced before 2020. Kit contains: 15x 2-pin socket, 15x 2-pin plug, 20x Locks, 5x 3-pin socket, 5x 3-pin plugs.

Part # 40035



LED Strobe Control Harness

8' Yellow LED Strobe Control Wiring Harness, 5 pack.

Part # 41549

*For units produced prior to 2020, Wago Conversion kit is also required.



LED Strobe Power Harness

8' Red & Black LED Strobe Power Wiring Harness, 5 pack.

Part # 41550

*For units produced prior to 2020, Wago Conversion kit is also required.



Battery Plate

Steel battery shelf for use with NightCharge systems in tower units.

Part # 41110



Security Bits & Screws

Code Blue's unique security screws provide an extra layer of security to your unit.

Part # 41414 - 2 Pack of Security Bits

Part # 41415 - 6 Pack of Security Bits

Part # 41416 - 1 Security Bit & 1 Driver

Part # 41417 - 1 Security Bit, 1 Driver, & 6

Countersunk Security Screws

Part # 41418 - 1 Security Bit, 1 Driver, & 6

Button-Head Security Screws

Part # 41419 - 1 Security Bit, 1 Driver, & 2

Countersunk Security Screws

Part # 41500 - 3 Button Head Security Screws

Part # 41544 - 6 Countersunk Security Screws

Part # 41545 - 2 Countersunk Security Screws



AUDIO PAGING

Replacement Audio Paging Systems & Components

Note: If retrofitting or updating any Audio Paging unit produced prior to 2023, please see "Legacy PAS to Current Audio Paging Amp" Instructions. Contact Technical Support for more details.

WM-180 Wall Mounted 180° Audio Paging Speaker

WM-180 - No Control - No Strobe

Color	Part #	Color	Part #
Safety Blue	40422	Gloss White	40426
Safety Red	40423	Gloss Black	40427
Safety Yellow	40424	Bright Silver	40434

WM-180 - No Control - with Strobe

Color	Part #	Color	Part #
Safety Blue	40905	Gloss White	40909
Safety Red	40906	Gloss Black	40910
Safety Yellow	40907	Bright Silver	40915

WM-180 - Analog Controller - No Strobe

Color	Part #	Color	Part #
Safety Blue	40492	Gloss White	40496
Safety Red	40493	Gloss Black	40497
Safety Yellow	40494	Bright Silver	40443

WM-180 - Analog Controller - with Strobe

Color	Part #	Color	Part #
Safety Blue	40917	Gloss White	40921
Safety Red	40918	Gloss Black	40922
Safety Yellow	40919	Bright Silver	40927

WM-180 - IP Controller - No Strobe

Color	Part #	Color	Part #
Safety Blue	40482	Gloss White	40486
Safety Red	40483	Gloss Black	40487
Safety Yellow	40484	Bright Silver	40445

WM-180 - IP Controller - with Strobe

Color	Part #	Color	Part #
Safety Blue	40929	Gloss White	40933
Safety Red	40930	Gloss Black	40934
Safety Yellow	40931	Bright Silver	40939



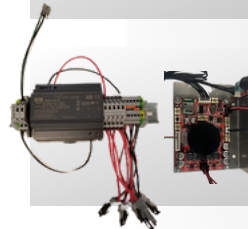
Pole Mount Kit - WM180

Pole mounting kit for WM180 Wall Mounted Audio Paging Speaker.
Part # 40017



Replacement Beacon Strobe Kit - WM180

Replacement blue strobe kit for WM180 Wall Mounted Audio Paging Speaker.
Includes Wago Conversion Kit for units produced prior to 2020
Part # 40011



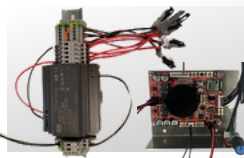
Audio Paging Amp System - No Area Light

Replacement Audio Paging Amp & Power System for CB 1-e units.
Part # 40409



Audio Paging Amp System - w/ Area Light

Replacement Audio Paging Amp & Power System for CB 1-s units.
Part # 40410



Audio Paging Amp & Power System

Replacement Audio Paging Amp & Power System for CB 2-ap units.
Part # 40009

360° Audio Paging System for CB1 & CB5 Series Towers

The 360° Audio Paging Speaker system mounts to the top of a CB 1 & CB 5 Series Towers.

CB 1 Series		CB 5 Series	
Color	Part #	Color	Part #
Safety Blue	42401	Safety Blue	42451
Safety Red	42402	Safety Red	42452
Safety Yellow	42403	Safety Yellow	42453
Midnight Blue	42405	Midnight Blue	42455
Gloss White	42407	Gloss White	42457
Gloss Black	42408	Gloss Black	42458
Bright Silver	42411	Bright Silver	42461
Dark Bronze	42409	Dark Bronze	42459
British Racing Green	42406	British Racing Green	42456
Tiger Orange	42412	Tiger Orange	42462



POWER

Replacement Power Systems & Components

NightCharge 10 Amp Charging System

NightCharge 10 Amp Charging system for CB 1 Series Towers.

Part #



Replacement NightCharge 10 Amp Charger

10amp Charger only for NightCharge Power Systems.

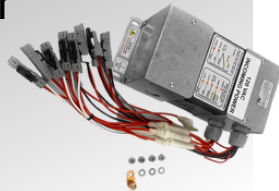
Part # 40079



Replacement Multi-Tap Power Kit for CB2-e, & CB5-p/s

Multi-Tap Transformer 210VA.
Inputs: 120, 240, 277, & 347V AC
Outputs: 5-24V AC & 5-12V DC

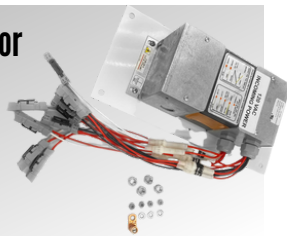
Part # 40100



Replacement Multi-Tap Power Kit for CB1-e/s, CB4-u, & CB9-s/t

Multi-Tap Transformer 210VA.
Inputs: 120, 240, 277, & 347V AC
Outputs: 5-24V AC & 5-12V DC

Part # 40104



Replacement Fuse Kit for Multi-Tap Power Systems

Contains 5 each of the following fast acting fuses:
2 Amp, 2.5 Amp, 4 Amp, & 5 Amp

Part # 40024



Replacement Fuse Kit for DIN Rail Power Systems

Contains 5 each of the following fast acting fuses:
0.5 Amp, 1 Amp, 2 Amp, 3 Amp, 10 amp, & 15 amp

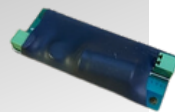
Part # 40020



Step-Down 24V AC to 12V DC Transformer for IP Speakerphone

For use when upgrading Legacy IP5000 Speakerphone to LS1000 Speakerphone.

Part # 41642



Power Converter 20-28V AC to 12V DC

Low voltage 20-28V AC to 12V DC power converter.

Part # SLNP0053



Replacement Backup Battery

12V 2.0Ah SLA Backup Battery for LS1000.
Part # 42506



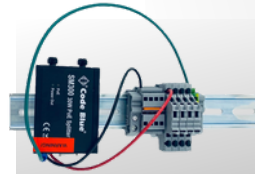
Replacement Backup Battery

12V 2.0Ah SLA Backup Battery for IA4100.
Part # 40006 - 1 Pack
Part # 41465 - 3 Pack



Replacement NightCharge Battery

12V 55.0Ah SLA Battery for NightCharge Systems.
Part # 41537



Replacement DIN Rail Power System with PoE

PoE Power Assembly with DIN Rail.
Part # 40111



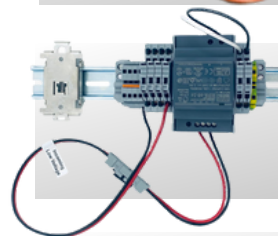
PoE Splitter Assembly - Non-DIN Rail

PoE Splitter Assembly with Mounting Plate for Non-DIN Rail Power Systems.
Part # 41574



PoE Splitter Assembly - DIN Rail

PoE Splitter Assembly for DIN Rail Power Systems.
Part # 40099



Replacement Standard DIN Rail Power System

Standard DIN Rail Power Assembly.
120-277V AC Incoming Power
Part # 40110



Transformer Standard DIN Rail Power System

120-277V AC Transformer Only for DIN Rail Power Systems.
Part # 40186



PoE Splitter with PoE Passthrough

Splitter provides PoE input to PoE (802.3at) & 24V DC wire terminal outputs.
Part # SLNP0188

SOLAR

Replacement Solar Powered Systems & Components

Replacement Solar System Battery

Replacement Gel 12v Battery for Solar Powered CB 1-w Systems.

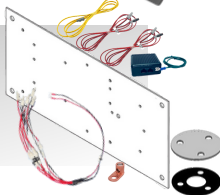
Part # SLNPO069 - 12V 73.6Ah



Solar to Hardwire Kit - 24V AC Input

For use with solar towers being converted to hardwire power. 24V AC Input only.

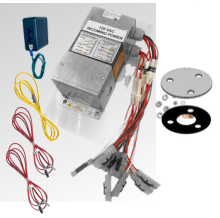
Part # 40289



Solar to Hardwire Kit - Multi-tap Input

For use with solar towers being converted to hardwire power. 120, 240, 277, & 347V AC input options. 5-24V AC and 5-12V DC output options.

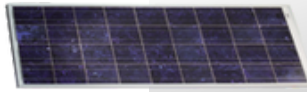
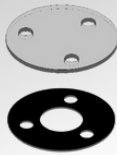
Part # 40298



Solar Tower Top Cap

For use with solar towers being converted to hardwire power. Covers remaining opening when solar panel mount is removed. Includes steel cap & rubber gasket.

Part # 40047



Solar Power System Upgrade Kit

For use in upgrading Legacy solar power systems. Includes solar panel, charge controller, 2 batteries, battery & panel cable kit, & battery plate.

Part # SLNP0158



Solar Power System Upgrade Kit - No Panel

For use in upgrading Legacy solar power systems. Includes charge controller, 2 batteries, battery & panel cable kit, & battery plate. Designed to work with existing V5 solar panel.

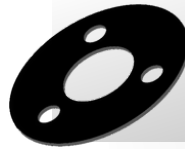
Part # 41643



Replacement Solar Panel Mount Gasket

Replacement gasket located between solar panel mount assembly & tower enclosure.

Part # SLNPO051



180W Solar Panel

Replacement 180W Solar Panel for existing solar powered towers.

Part # SLNP0169

5G Cellular Router Kit

5G Cellular Kit includes 5G router, Wi-Fi/GPS/5G Antennas, mounting brackets, & power assembly.

For use with CB 1-w Only.

Part # SLNPO183



Solar Panel & Battery Cable Kit

Includes cable harnesses for solar panel and battery connections.

Part # SLNPO170



Audio Paging Top for Solar Towers

Audio Paging speaker array designed specifically for use with Code Blue's CB 1-w Solar Powered Tower. Operates off solar power system within the tower, allowing audio paging capability anywhere you need!



4G/LTE Kit for CB 1-W Tower

Ruggedized 4G/LTE Cellular Router Kit for Solar Towers. Includes cellular router & antenna kit, and power connection harness.

For CB 1-w only.

Part # SLNP0006



Solar Battery Blanket

Battery blanket provides additional insulation in cold weather applications.

Part # SLNP0080



Replacement Solar Charge Controller

Replacement Solar Power Charge Controller 12V 20A.

Part # SLNP0168



Color	Part #	Color	Part #
Safety Blue	40470	Gloss Black	40475
Safety Red	40471	Bright Silver	40476
Safety Yellow	40472	Dark Bronze	40477
Midnight Blue	40473	British Racing Green	40478
Gloss White	40474	Tiger Orange	40479

NETWORKING

Replacement networking & cellular communication Systems & Components

SFP Fiber Media Converter Kit

Includes: 1x Hardened SFP media Converter, 2x SFP Fiber Transceivers, & 1x 10-port Gigabit PoE Switch (8-10/100/1000BASE-T(X) PoE+ ports & 2 Gigabit uplink ports (1 TX + 1 SFP))

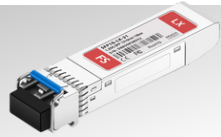
Part # SLNP0034



SFP Fiber Transceiver

SFP transceiver support up to 10km lengths over LC duplex SMF fiber.

Part # SLNP0033



Hardened SFP Media Converter

Hardened 1000BASE-TX to 1000BASE-SX/LX/BX/SFP Media Converter.

Part # SLNP0032



PoE & Network Long Range Extender

Includes transmitter, receiver, & power supply. Max 30W power & 100Mbps bandwidth, up to 300m distance over copper pair.

Part # SLNP0107



PoE Injector

PoE Injector supplies up to 30W of PoE power. 120V AC input required.

Part # SLNP0101



Industrial PoE Injector

PoE Injector w/ integrated DIN Rail mount. Up to 30W of PoE output. 12-48V DC @ 4Amp Input.

Part # SLNP0134



PoE Splitter with PoE Passthrough

Splitter provides PoE input to PoE (802.3at) & 24V DC wire terminal outputs.

Part # SLNP0188



Server Depth Wall Mount 12U Rack

12U Wall Mount Server/Network Rack. Accommodates equipment up to 32.5" deep. Locking front door, vented sides, top, & bottom. 8 ports for ventilation fan mounting (fans not included).

Part # SLNP0046



FXS/VoIP 2-Port Gateway

Supports 2 SIP profiles through 2 FXS ports and a single 10/100Mbps port.

Part # SLNP0054



FXS/VoIP 4-Port Gateway

Supports 2 SIP profiles through 4 FXS ports and dual Gigabit ports.

Part # SLNP0001



FXS/VoIP 8-Port Gateway

Supports 2 SIP profiles and 8 FXS ports.

Part # SLNP0002



FXS/VoIP 24-Port Gateway

Provides 24 FXS Ports.

Part # SLNP0003



VPN Commercial Router - 5 Peers

Commercial-grade VPN connection router. 1 WAN Port. Capable of supporting up to 5 VPN Peers. Includes 5 License Expansion.

Part # SLNP0007



VPN Commercial Router - 20 Peers

Commercial-grade VPN connection router. 1 WAN Port. Capable of supporting up to 20 VPN Peers. Includes 20 License Expansion.

Part # SLNP0019



VPN Enterprise Router - 30 Peers

Enterprise-grade VPN connection router. 3 WAN Ports. Capable of supporting up to 500 Users & 30 VPN Peers.

Part # SLNP0008



VPN Enterprise Router - 50 Peers

Enterprise-grade VPN connection router. 5 WAN Ports. Capable of supporting up to 1000 users & 50 VPN Peers.

Part # SLNP0009



VPN Enterprise Router - 300 Peers

Enterprise-grade VPN connection router. 7 WAN Ports. Capable of supporting up to 2000 users & 300 VPN Peers.

Part # SLNP0005



PAINT

Options to keep the finish of your **Code Blue** product looking new.

Paint Touch Up Kits

Paint touch up kits are available in Code Blue's standard color offerings. Includes activator, hardener, & paint.

Color	Part #	Color	Part #
Safety Blue	41601	Gloss Black	41607
Safety Red	41602	Dark Bronze	41608
Safety Yellow	41603	British Racing Green	41609
Midnight Blue	41604	Cardinal Red	41611
Medium Bronze	41605	Tiger Orange	41612
Gloss White	41606	Bright Silver	41613



Note - For best performance of the touch up paint, please use within 5-7 days of receipt. Also, once mixed properly, workability time is approximately 4 hours. Use paint solution immediately after mixing.

Custom colors available, contact **Customer Service** for more details.

Annual Paint Restoration Kit

Includes polishing pads, apron, rubbing compound, polish, washing soap, microfiber towel, & cleaning sponge. By following the proper maintenance procedures & regular use of this kit regularly will help your Code Blue unit stay looking new for years to come!

Part # 40601



Paint Restoration Services

If your unit's pain finish has seen better days or has been damaged, but still functions properly, you can utilize Code Blue's **Paint Refurbish Program** to bring it back to its original look! Pricing and availability varies, contact **Customer Service** for more details.



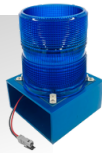
LIGHTING

Replacement components & accessories for **Code Blue** lighting systems.

A-700 Area Light

Replacement Area Light for CB 1-s/w & CB 2-s.

Part # 41539 - Blue Light
Part # 40078 - Green Light



LED Faceplate Light

Replacement LED Faceplate Light Only.

For use with units produced in 2020 to present.
Part # 41548



LED Faceplate Light Kit

Replacement LED Faceplate light Kit.

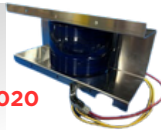
Only for use with units produced in 2019 & prior.
Part # 40196



S-2000 180° LED Beacon Strobe for CB 2 Series

180° LED Beacon Strobe for Current CB 2-a/ap/e.

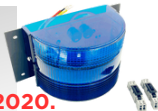
Includes Wago Conversion Kit for units produced prior to 2020
Part # 40192



S-2000 180° LED Beacon Strobe for Legacy CB 2-a

180° LED Beacon Strobe for Legacy CB 2-a.

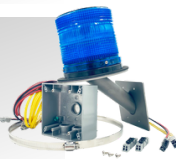
Includes Wago Conversion Kit for units produced prior to 2020.
Part # 41162



S-1000 Remote Mount Beacon Strobe Kit

Beacon Strobe & Mounting Kit - Includes strobe, mounting bracket, banding, & wire harnesses.

Includes Wago Kit for units produced prior to 2020
Part # 40525



S-1050 Remote Mount Beacon Strobe w/ PhotoCell

Strobe w/ PhotoCell for dawn to dusk transition & Mounting Kit.

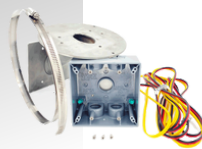
Part # 40528



Remote Strobe Mounting Kit

Includes Strobe bracket, electrical box, wiring, & banding. For S-1000 Strobe Only. Does not include strobe.

Part # 40075



S-1000 Beacon Strobe

Replacement Beacon Strobe only.

Includes Wago Conversion Kit for units produced prior to 2020

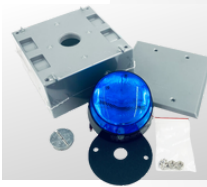
Part # 40159 - Blue Strobe
Part # 41636 - Amber Strobe
Part # 40077 - Green Strobe



Remote Strobe Wire Harness Kit

Harness kit for remote beacon strobe. Includes red/black power wiring & yellow control wiring with pre-installed wago connectors.

Part # 40014 - 15' Harness Length
Part # 40155 - 20' Harness Length



S-50 Mini Strobe Assembly

Includes S-50 Mini strobe, cast 2 gang bell box, 2 gang stainless steel faceplate, & 3/4" NPT plug.

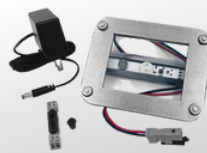
Part # 40197



Remote Strobe Kit w/ 4G/LTE Router

Includes 4G/LTE cellular router assembly, mounted inside NEMA enclosure, S-1000 remote strobe kit, & 8' antenna assembly. Requires 12-24V DC Power.

Part # SLNPO024



Replacement LED Light for Legacy Assembly

LED Faceplate Light retrofit assembly for legacy units with fluorescent faceplate light.

Part # 40001



A-700 Area Light Retrofit Assembly

Includes area light, wiring harnesses, wago conversion kit, & 40va power supply.

For use with units powered by a 6-outlet plug strip only.

Part # 40124



S-1000 Strobe Retrofit Assembly

Includes strobe, wiring harnesses, wago conversion kit, strobe mounting disk, & 40va power supply.

For use with units powered by a 6-outlet plug strip only.

Part # 40117



Replacement Strobe Lens Only

Replacement S-1000 Strobe Lens Only - Blue, 3 Pack.

Part # 41440

COMMUNICATION

Replacement communication system components & accessories.

Multiline IP Desk Phone

16 Line IP Video Phone w/ Android tablet functionality.
Part # SLNP0104



IP Desk Phone Expansion Module

LCD extension module. 20 extension keys & 2 arrow keys. Allows up to 40 contacts/extension per module.
Part # SLNP0105



5-in-1 Antenna for Cellular Routers

2 LTE, 2 Wi-Fi, & 1 GPS Antennas built in. Requires 3/4" hole to be drilled in enclosure.
Part # SLNP0189



Multi-Carrier Backup SIM Card

Backup Cellular Service SIM Card that auto-rolls to available carrier if current service goes down.
Part # SLNH0040-AR-BU



4G/LTE Cellular Router

4G/LTE Mini Cellular Router w/ power assembly. GPS, LTE, & Wi-Fi Antennas included.
Part # SLNP0012



4G/LTE Cellular Router Kit - Short Distance

4G/LTE Cellular Router kit for units within 8' of antenna. Includes router, omni-directional antenna, NEMA box, mounting assembly, & 8' antenna cable.
Requires 12-24V DC or PoE Splitter inside Help Point*.
Part # SLNP0013



4G/LTE Cellular Router Kit - Medium Distance

4G/LTE Cellular Router kit for units within 25'-100' of antenna. Includes router, omni-directional antenna, NEMA box, mounting assembly, & 25' of siamese cable.
Requires 12-24V DC or PoE Splitter inside Help Point*.
Part # SLNP0014



4G/LTE Cellular Router Kit - Long Distance

4G/LTE Cellular Router kit for units within 300' of antenna. Includes router, omni-directional antenna, NEMA box, & mounting assembly.
Requires 12-24V DC or PoE Splitter inside Help Point*.
Part # SLNP0020

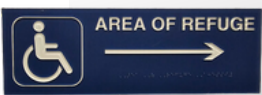


Contact [Code Blue Customer Service](#) for more options and details to integrate Cellular Communication equipment into Code Blue Enclosures.



Area of Refuge(AOR) Sign - Wheelchair

9" x 6" AOR Location Sign w/ Wheelchair.
Part # SLNP0041



Area of Refuge(AOR) Sign - Direction w/ Wheelchair

15" x 5" Directional AOR Location Sign w/ Wheelchair.
Part # SLNP0042 - Arrow Right
Part # SLNP0043 - Arrow Left



Area of Refuge(AOR) Sign - Push For Help

9" x 6" Push For Help instructional AOR sign. Customizable location & floor details.
Part # SLNP0038



Area of Refuge(AOR) Sign - Illuminated Double Face

120V Edge Lit Ceiling/Wall mountable AOR Sign w/ Battery Backup. Moveable chevron directional arrows for easy install.
Part # SLNP0010



Area of Refuge(AOR) Master Station Cabinet

17.38" x 9.12" x 9.18" Cabinet w/ hinged door. 4 holes for wall mounting on back & one conduit knockout.
Part # SLNP0029



Emergency Help Phone Location Sign

12"x16" Emergency Help Phone w/ Arrow Sign. Includes 6 mounting screws.
Part # 41464



4G/LTE Cellular Router Kit - CB2, CB4, CB6 Series

4G/LTE Cellular Router Kit. Includes router assembly, antennas, & power adaptor.
For CB 2-a/e/s, CB 4-r/s, & CB 6-s only.
Part # SLNP0026



4G/LTE Cellular Router Kit - CB1 Series

4G/LTE Cellular Router Kit. Includes router assembly, antennas, power harness, & mounting plate.
For CB 1-e/s only.
Part # SLNP0022



Low Profile 4G/LTE Panorama Antenna - CB1 Series

4G/LTE Omni-Directional Antenna for cellular connection applications.
For CB 1-e/s only.
Part # SLNP0056

LEGACY PRODUCT REPLACEMENTS

Over the years, some Code Blue products have been discontinued from our lineup due to advancements in technology, shifts in component availability, changes in market demands, and other industry-related reasons. Below is a basic guide that provides detail on which products are no longer available, and can help point you to the proper item or product family that serves as a replacement. Please contact Code Blue Customer Service or Technical Support for any questions you may have related to replacement products for an item that is no longer in production.

Discontinued Product	Description	Suggested Replacement
IP5000 Family of VoIP Faceplate Speakerphones	Discontinued on 8/15/2022 due to component shortages.	LS1000 Family of VoIP Faceplate Speakerphones
ToolVox X3 Server	Phased out of production throughout 2022.	Nebula, ToolVox XS/XV Server, & Blue Alert Family of Products & Services
CB 2-e 8" Depth Enclosure	Redesigned CB 2-e in 2020 to a 4" depth to allow for ADA Compliance.	Current CB 2-e Model
CB 2-e PAS	Phased out of production throughout 2023 due to component changes & shortages.	CB 2-ap
360° PAS Top for CB1 & CB5 Series Towers	Phased out of production throughout 2023 due to component changes & shortages.	New 360° Audio Paging Tops for CB1 & CB5 Towers
WM180 Wall Mounted 180° PAS Unit	Phased out of production throughout 2023 due to component changes & shortages.	New WM180 Audio Paging Product Offerings

Help Point® parts and accessories are available through a number of sales and distribution partners, making it easy to request a quote or find the representative or reseller in your area.



800.323.8167
anixter.com



800.233.6261
adiglobaldistribution.us



800.472.9227
graybar.com



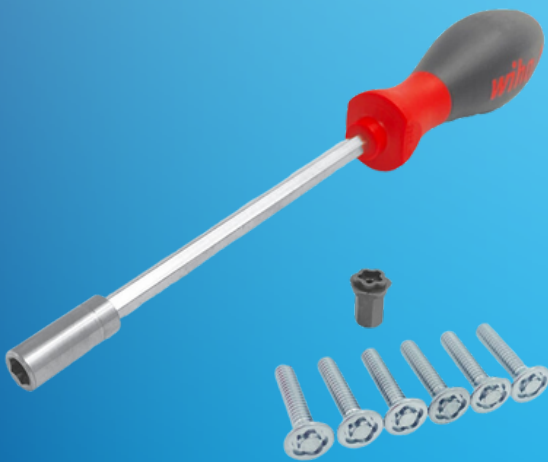
800.422.6191
jenne.com



888.222.8832
accu-tech.com



800.944.2432
scansource.com



Code Blue Corporation
259 Hedcor Street
Holland, MI 49423

Contact Us:

800-205-7186
codeblue.com

CUSTOMER SERVICE

customerservice@codeblue.com

TECHNICAL SUPPORT

technicalsupport@codeblue.com

INSIDE SALES SUPPORT

insidesales@codeblue.com

REQUEST FOR QUOTE

quotes@codeblue.com

PLACE AN ORDER

orders@codeblue.com

MADE IN THE USA

PURE MICHIGAN®

GU-169-E