

Product Description

The **CB 6-f Flush Mount Enclosure** provides a hands-free emergency speakerphone enclosed in rugged carbon steel housing mounted into a wall for a cost effective and reliable solution to provide direct communication with first responders and extend security efforts to hallways, transit centers, parking decks and other sheltered structures.

Standard Features

- ✓ Durable carbon steel construction
- ✓ Slim design for easy install
- ✓ Compatible with all standard Code Blue Faceplate Speakerphones



Popular Upgrades



ToolVox™ XV
Virtual Machine



ToolVox™ XS
Server



Remote Mounted
Strobe



Hearing Loop



CB 6-f shown with LS1000 Dual Button Speakerphone with Keypad.

Technical Features

Specifications

- **Height:** 11.00" (27.94 cm)
- **Width:** 8.25" (20.95 cm)
- **Depth:** 3.50" (8.89 cm)
- **Weight:** 5.2 lbs. (2.35 kg)
- **Material & thickness:** 0.125" carbon steel
- **Standard Power:** 12-24V AC/DC
- **Optional Power:**
 - 120-277V AC
 - PoE


Communication

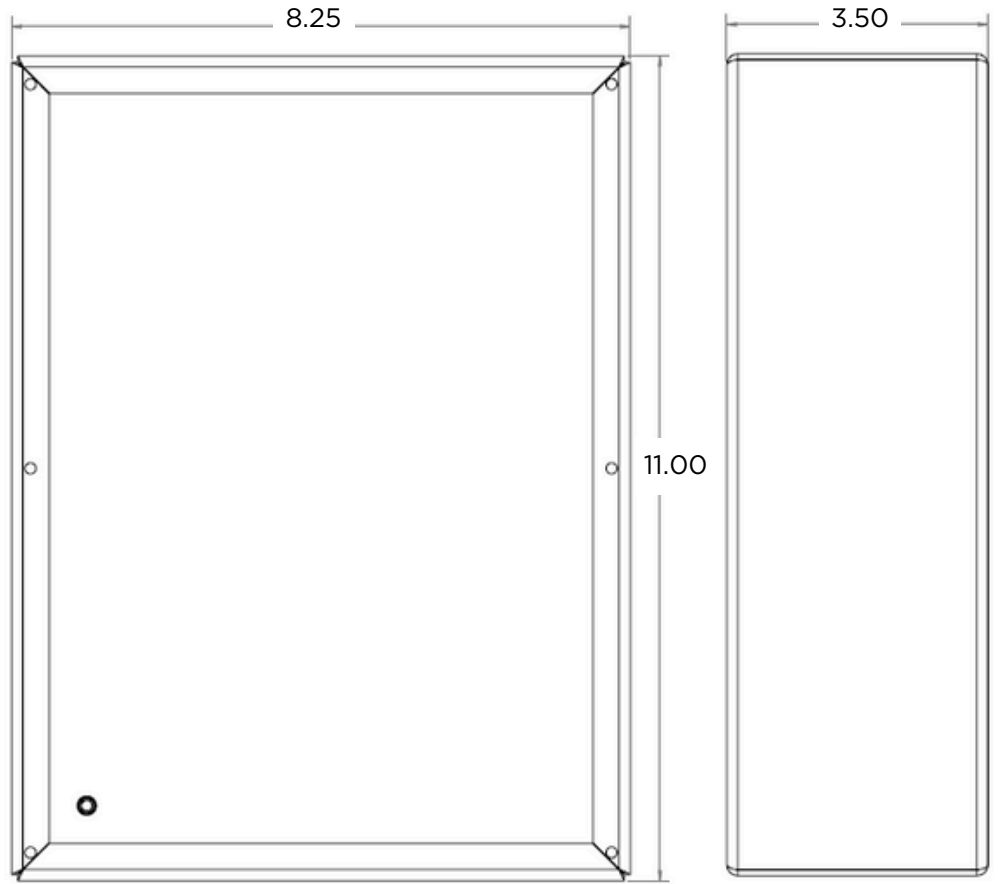
- **Speakerphone Options**
 - **LS1000/LS2000:** Full Duplex, SIP Compatible VoIP Phone.
 - **IA4100:** Analog full duplex phone.
- **Connection Options**
 - Hardwired
 - Cellular
 - IP Wireless

Style

- **Black Powder Coat Finish**

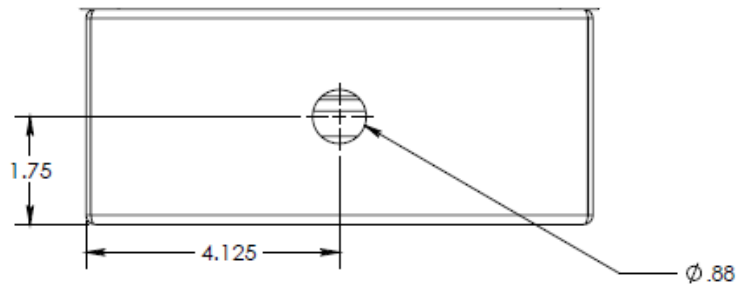
Compliance

- UL 62368-1 
- Built to NEMA 3S Specifications
- Designed to ADA Specifications



FRONT VIEW

SIDE VIEW



BOTTOM VIEW

Note: Specifications subject to change without notice or obligation on the part of Code Blue Corporation.