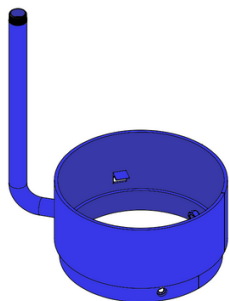
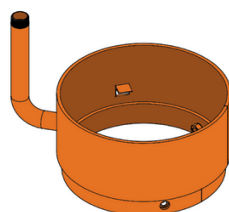


Product Description

Code Blue has three varieties of **equipment mounting rings** available as optional features for the CB1 Series Tower Help Points® that allow you to internally and externally mount third party communication and security equipment with your unit to enhance connectivity and functionality.



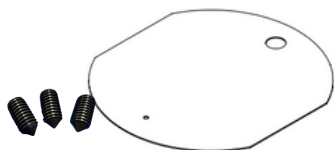
**5.25" Equipment Ring
with 16" Post**



**5.25" Equipment Ring
with 8" Post**



5.25" Equipment Ring



Included Components

Conepoint Set Screws: Set of 3 screws included with all Equipment Ring models.

Internal Equipment Shelf: 1 shelf included with all Equipment Ring models.

Standard Features

- ✓ 0.25" carbon steel construction
- ✓ Weather, vandal and UV resistant internal storage space for third party devices
- ✓ Rugged external mounting bracket for attaching third party devices, antennas, etc.

Available For:

- CB1-e
- CB 1-s

Specification

5.25" Equipment Ring with 16" Post

- **Ring Height:** 5.25" (6.75" with inset) (13.33/17.15 cm)
- **Outside Diameter:** 12.75" (32.39 cm)
- **Antenna Post:** 1.31" Diameter x 16.00" H
- **Thread:** 1.00" NPT

5.25" Equipment Ring with 8" Post

- **Ring Height:** 5.25" (6.75" with inset) (13.33/17.15 cm)
- **Outside Diameter:** 12.75" (32.39 cm)
- **Antenna Post:** 1.31" Diameter x 8.00" H
- **Thread:** 1.00" NPT

5.25" Equipment Ring

- **Height:** 5.25" (6.75" with inset) (13.33/17.15 cm)
- **Outside Diameter:** 12.75" (32.39 cm)
- **External Equipment Mounting Arm**

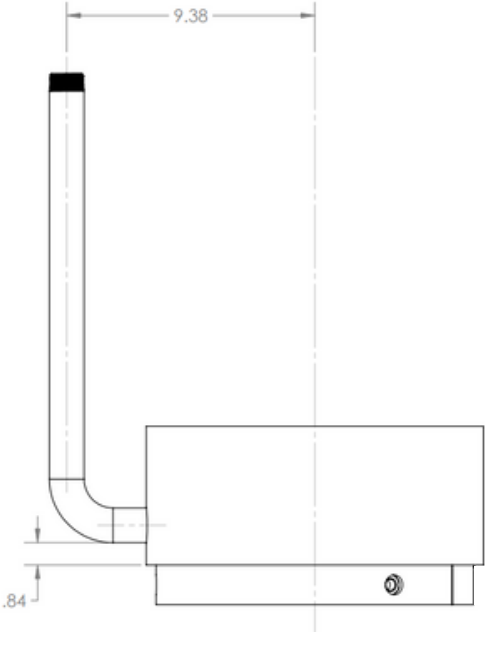
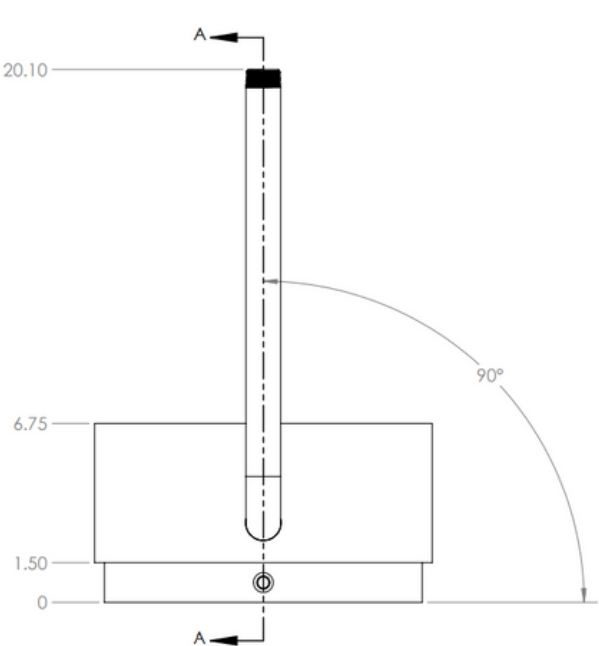
Paint Color Options

- **Standard Colors:** Safety Blue, Safety Red, Safety Yellow, Gloss Black, Gloss White, Bright Silver, Dark Bronze, Medium Bronze, Midnight Blue, British Racing Green, and Tiger Orange
- **Custom colors & clear coat options available upon request.**

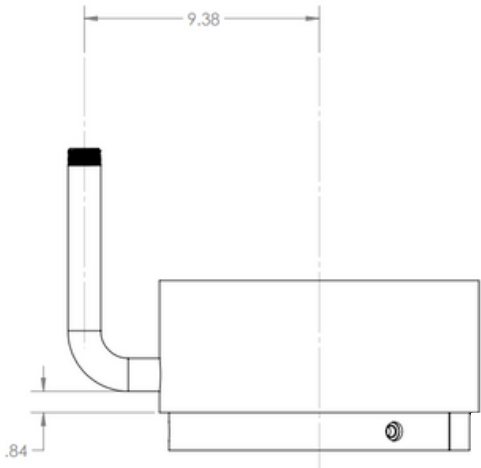
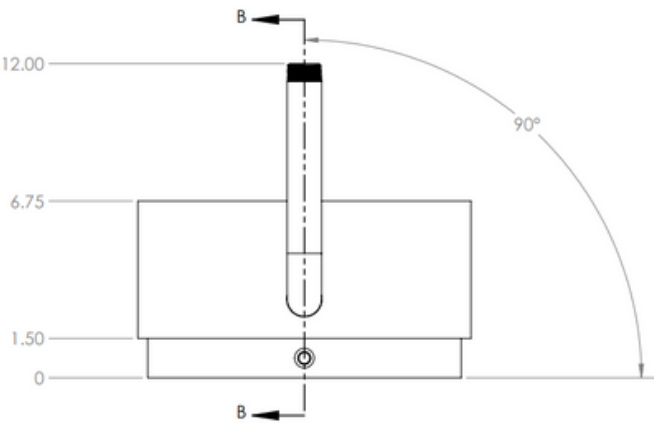


Dimensions

5.25" Equipment Ring with 16" Post



5.25" Equipment Ring with 8" Post



5.25" Equipment Ring

