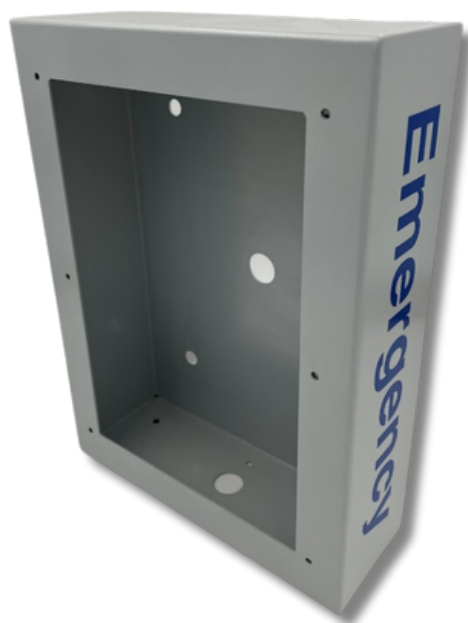


Product Description

The **CB 6-s Surface Mount Enclosure** provides a convenient way to install a hands-free emergency speakerphone in a rugged carbon steel housing for a cost-effective and reliable solution to provide direct communication with first responders and extend security efforts to hallways, transit centers, parking decks and other sheltered structures.

Standard Features

- ✓ Durable carbon steel construction
- ✓ Slim design for easy install
- ✓ Compatible with all standard Code Blue Faceplate Speakerphones
- ✓ Wall Mounting Hardware Included



Popular Upgrades



ToolVox™ XV
Virtual Machine



ToolVox™ XS
Server



Managed Cloud Solutions



Remote Mounted
Strobe



Hearing Loop



CB 6-s shown with LS1000 Single Button Speakerphone



Technical Features

Specifications

- **Height:** 12.75" (32.39 cm)
- **Width:** 9.5" (24.13 cm)
- **Depth:** 3.48" (8.84 cm)
- **Weight:** 7 lbs. (3.2 kg)
- **Material & thickness:** 0.078" carbon steel
- **Standard Power:** 12-24V AC/DC
- **Optional Power:**
 - 120-277V AC
 - PoE


Communication

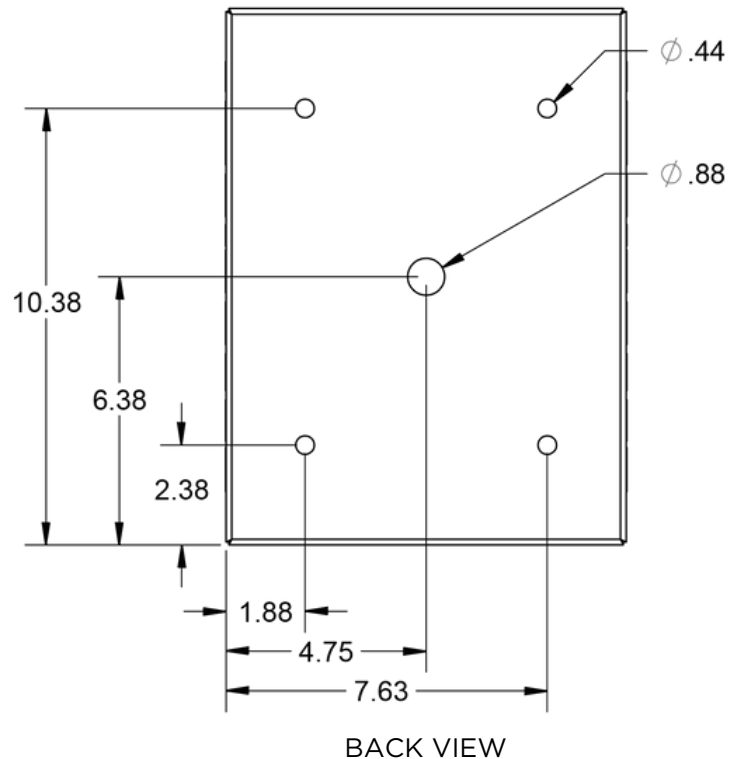
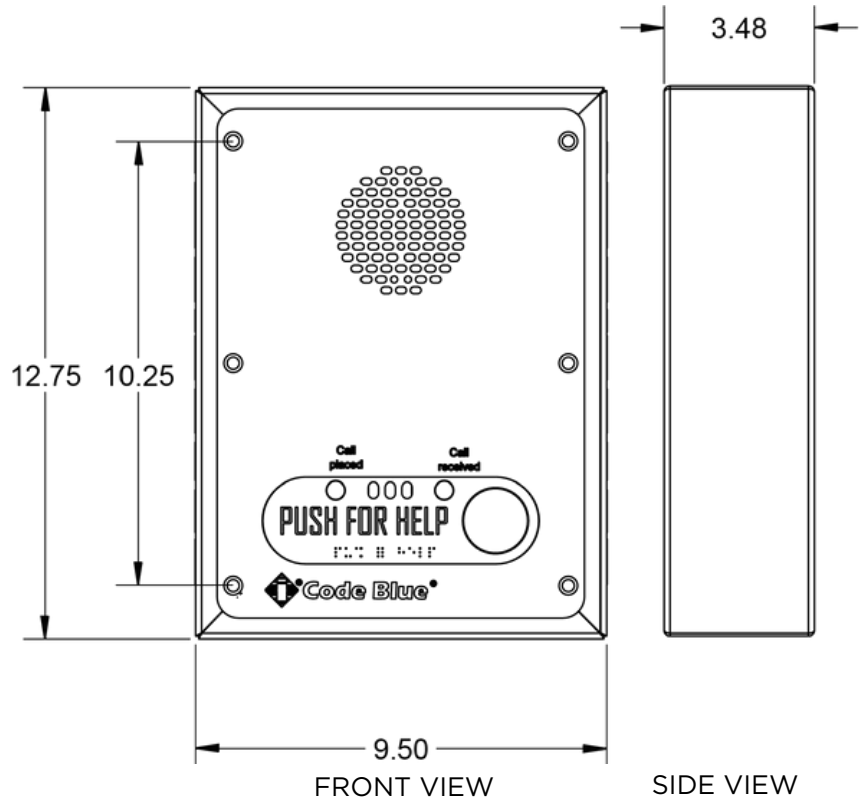
- **Speakerphone Options**
 - **LS1000*/LS2000:** Full Duplex, SIP Compatible VoIP
 - Phone. **IA4100:** Analog full duplex phone.
- **Connection Options**
 - Hardwired
 - Cellular
 - IP Wireless

Style

- **Standard wet coat paint options:**
Safety Blue, Safety Yellow, Safety Red, Gloss White, Bright Silver, Tiger Orange, Midnight Blue, Gloss Black, Dark Bronze, Cardinal Red, Medium Bronze, British Racing Green, Architectural Gray, & Oak Buff.
- **Standard Graphics text options:**
Emergency, Assistance, Help Point, Police, Courtesy, Security, Information
- **Standard Graphics text colors:**
White, Black, Blue, Red, Green, Yellow, Orange, Purple, & Brown
- **Custom Paint Colors, Graphic Colors, Graphic Text & Fonts also available.**

Compliance

- UL 62368-1 
- Built to NEMA 4 Specifications
- Designed to ADA Specifications



*When ordering enclosure with the LS1000 speakerphone that includes an Axis camera and cellular service equipment, an externally mounted NEMA housing is required to ensure proper operation.

Note: Specifications subject to change without notice or obligation on the part of Code Blue Corporation.