

Product Description

The **CB 9-t** is a heavy duty gatekeeper pedestal enclosure available in six different configurations at both semi-truck and car heights that can extend security efforts to parking entry points, gated locations, and manufacturing & industrial facilities.

Standard Features

- ✓ Durable quarter-inch steel construction
- ✓ Trademarked cylindrical design
- ✓ 12.75" diameter
- ✓ LED faceplate light

Popular Upgrades



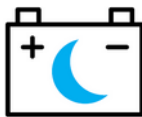
ToolVox™ XV
Virtual Machine



ToolVox™ XS
Server



Managed Cloud Solutions



NightCharge®



Hearing Loop

Technical Features

Specifications

- **Height:**
 - Single Truck Height: 94.18" (239.21 cm)
 - Dual Truck Height: 102.43" (260.17 cm)
- **Weight:**
 - Single Truck Height: 300lbs (136.07 kg)
 - Dual Truck Height: 330lbs (149.68 kg)
- **Diameter:** 12.75" (32.38 cm)
- **Material & thickness:** 0.25" steel
- **Access door:** 14.00" x 9.64" (35.56 x 24.49 cm)
- **Standard Power:** 12-24V AC/DC
- **Optional Power:**
 - 120-277V AC
 - NightCharge®
 - PoE

Communication

- **Speakerphone Options**
 - **LS1000/LS2000:** Full Duplex, SIP Compatible VoIP Phone.
 - **IA4100:** Analog full duplex phone.
- **Connection Options**
 - **Hardwired**
 - **Cellular**
 - **IP Wireless**


Lighting

- LED faceplate light

Style

- **Standard wet coat paint options:**
Safety Blue, Safety Yellow, Safety Red, Gloss White, Bright Silver, Tiger Orange, Midnight Blue, Gloss Black, Dark Bronze, Cardinal Red, Medium Bronze, British Racing Green, Architectural Gray, & Oak Buff.
- **Standard Graphics text options:**
Emergency, Assistance, Help Point, Police, Courtesy, Security, Information
- **Standard Graphics text colors:**
White, Black, Blue, Red, Green, Yellow, Orange, Purple, & Brown

Compliance

- UL 62368-1 
- Built to NEMA 4 Specifications
- Designed to ADA Specifications

Available Configurations



Dual truck
and car
faceplates



Dual truck
and single car
faceplates



Dual truck
faceplates



Single truck
and dual car
faceplates



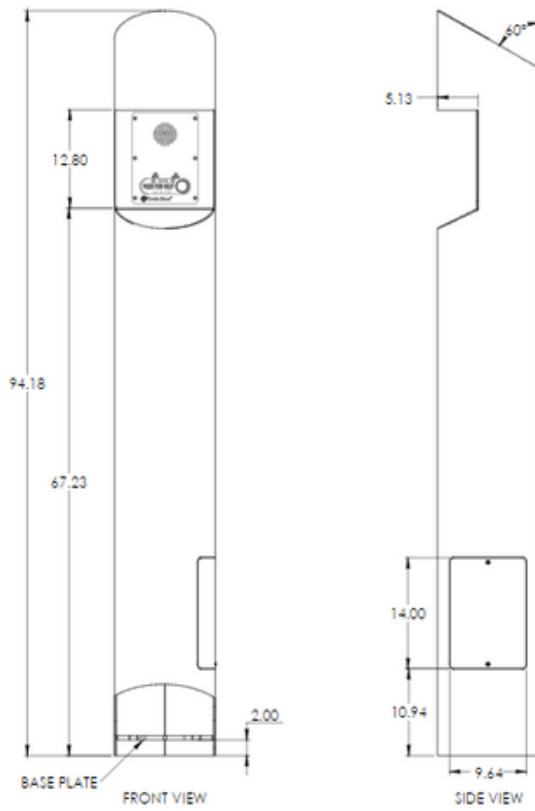
Single truck
and single car
faceplates



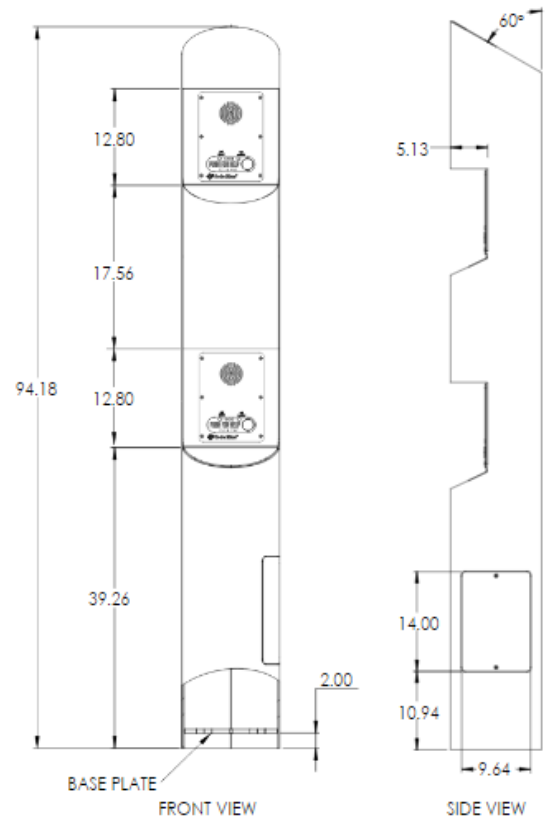
Single truck
faceplate

Note: Specifications subject to change without notice or obligation on the part of Code Blue Corporation.

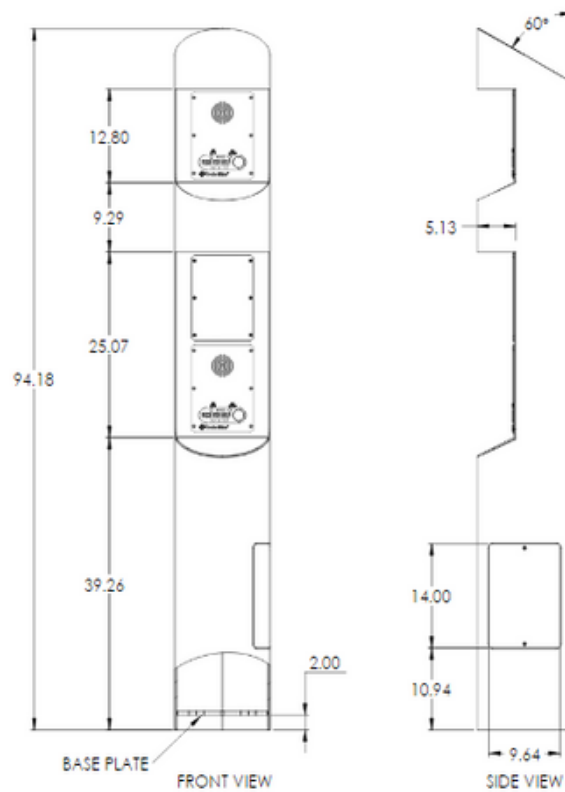
Single Truck Faceplate



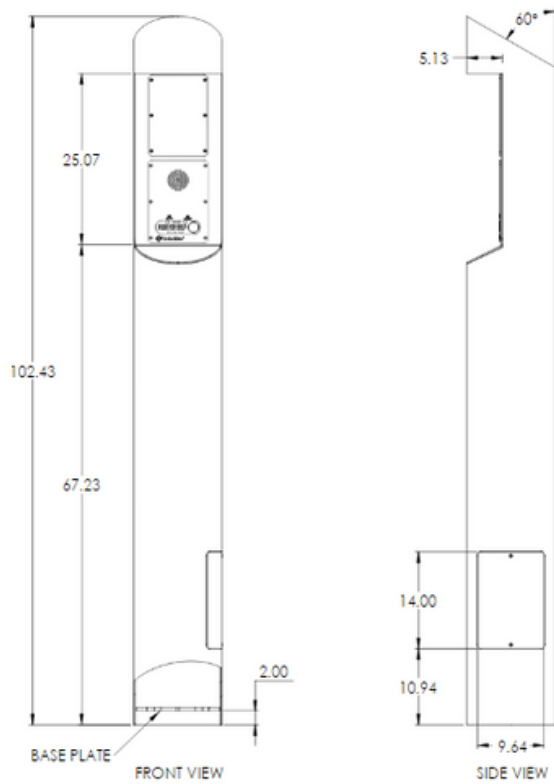
Single Truck & Single Car Faceplate



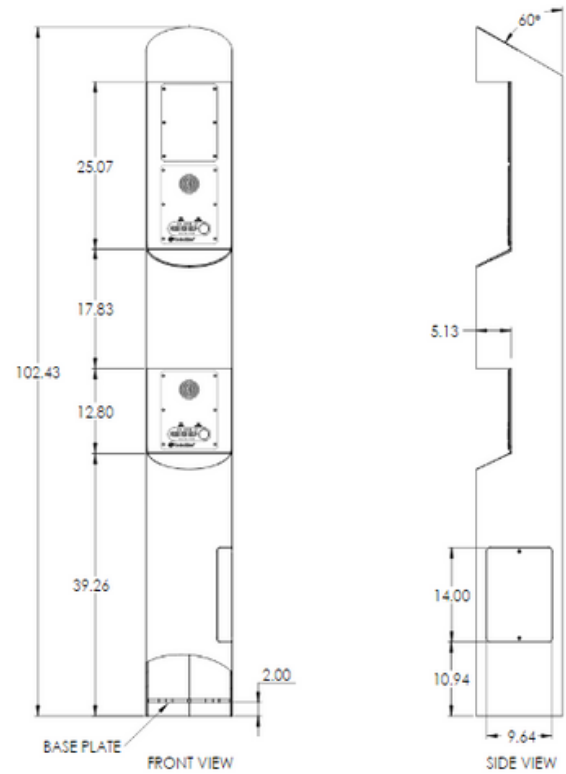
Single Truck & Dual Car Faceplate



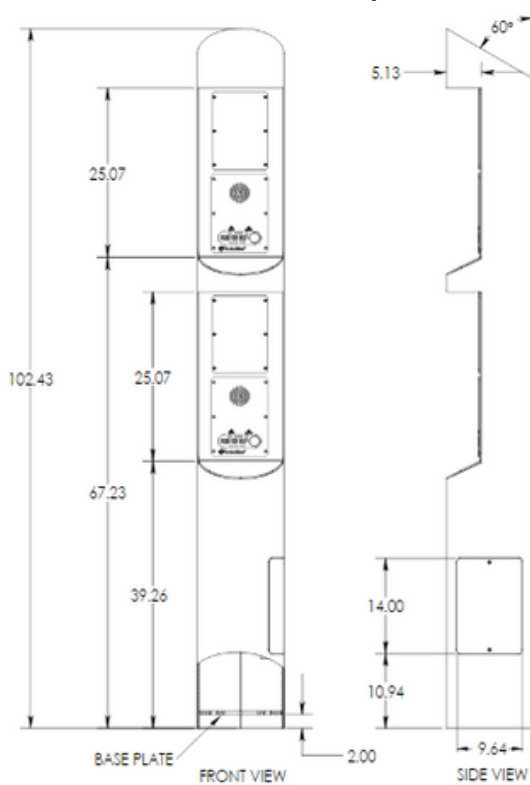
Dual Truck Faceplate



Dual Truck & Single Car Faceplate

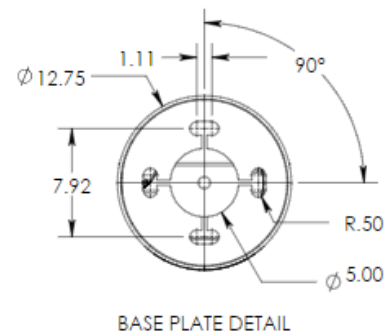


Dual Truck & Dual Car Faceplate



Mounting Schematics

*Applies to all shown CB 9-t configurations



Note: Specifications subject to change without notice or obligation on the part of Code Blue Corporation.