

## Product Description

The **CB 9-t** is a heavy duty gatekeeper pedestal enclosure available in six different configurations at both semi-truck and car heights that can extend security efforts to parking entry points, gated locations, and manufacturing & industrial facilities.



## Standard Features

- ✓ Durable steel construction
- ✓ Trademarked cylindrical design
- ✓ 12.75" diameter
- ✓ LED faceplate light

## Popular Upgrades



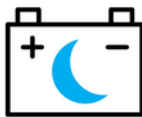
ToolVox™ XV  
Virtual Machine



ToolVox™ XS  
Server



Managed Cloud Solutions



NightCharge®



Hearing Loop



# Technical Features

## Available Configurations

### Specifications

- **Height:**
  - Single Truck Height: 94.18" (239.21 cm)
  - Dual Truck Height: 102.43" (260.17 cm)
- **Weight:**
  - Single Truck Height: 300lbs (136.07 kg)
  - Dual Truck Height: 330lbs (149.68 kg)
- **Diameter:** 12.75" (32.38 cm)
- **Material & thickness:** 0.135" (10 gauge) steel
- **Access door:** 14.00" x 9.64" (35.56 x 24.49 cm)
- **Standard Power:** 12-24V AC/DC
- **Optional Power:**
  - 120-277V AC
  - NightCharge®
  - PoE

### Communication

- **Speakerphone Options**
  - **LS1000/LS2000:** Full Duplex, SIP Compatible VoIP Phone.
  - **IA4100:** Analog full duplex phone.
- **Connection Options**
  - **Hardwired**
  - **Cellular**
  - **IP Wireless**


### Lighting

- LED faceplate light

### Style

- **Standard wet coat paint options:**  
Safety Blue, Safety Yellow, Safety Red, Gloss White, Bright Silver, Tiger Orange, Midnight Blue, Gloss Black, Dark Bronze, Cardinal Red, Medium Bronze, British Racing Green, Architectural Gray, & Oak Buff.
- **Standard Graphics text options:**  
Emergency, Assistance, Help Point, Police, Courtesy, Security, Information
- **Standard Graphics text colors:**  
White, Black, Blue, Red, Green, Yellow, Orange, Purple, & Brown

### Compliance

- UL 62368-1 
- Built to NEMA 4 Specifications
- Designed to ADA Specifications



Dual truck  
and car  
faceplates



Dual truck  
and single car  
faceplates



Dual truck  
faceplates



Single truck  
and dual car  
faceplates



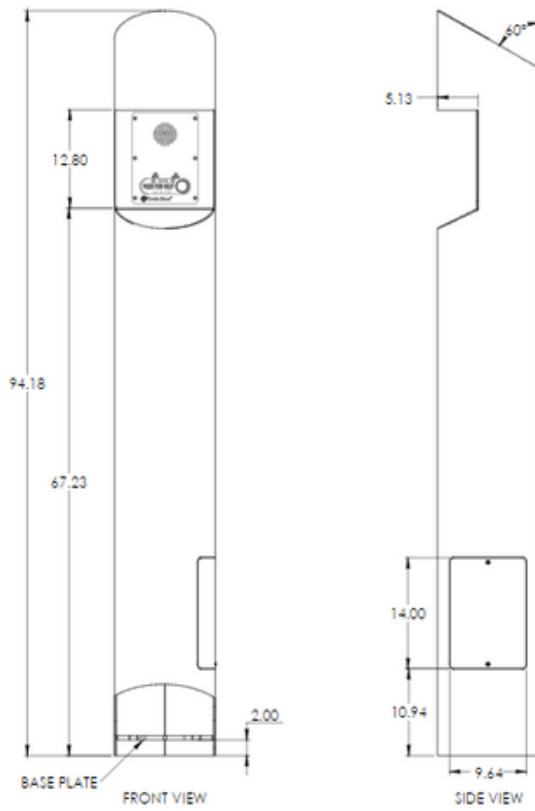
Single truck  
and single car  
faceplates



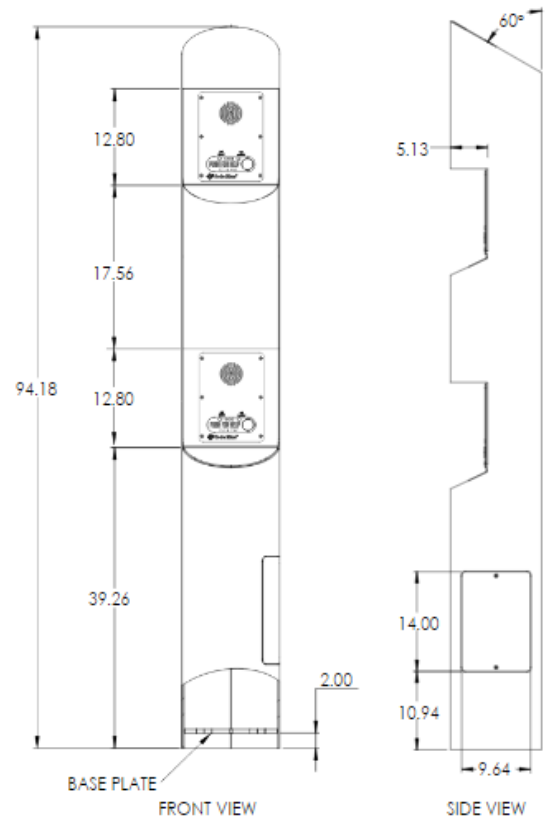
Single truck  
faceplate

Note: Specifications subject to change without notice or obligation on the part of Code Blue Corporation.

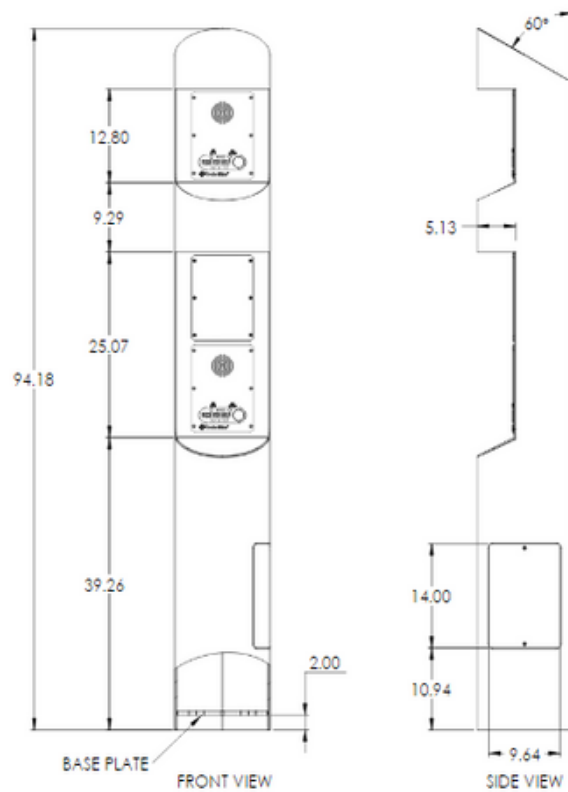
### Single Truck Faceplate



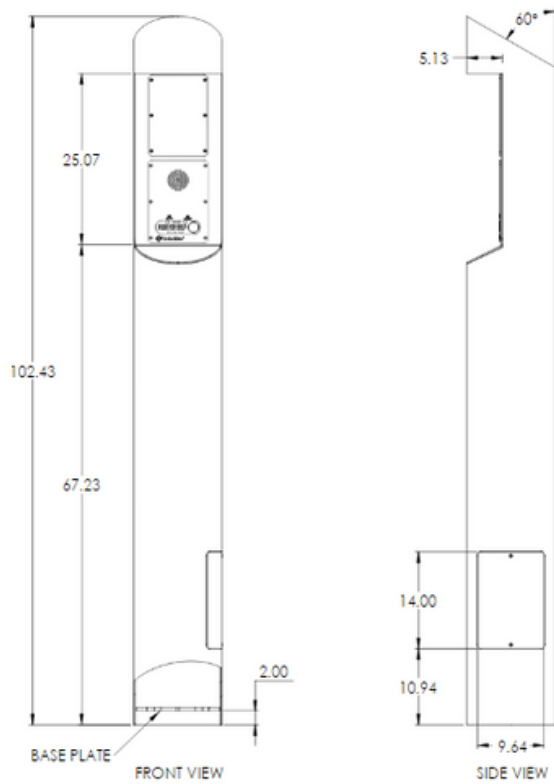
### Single Truck & Single Car Faceplate



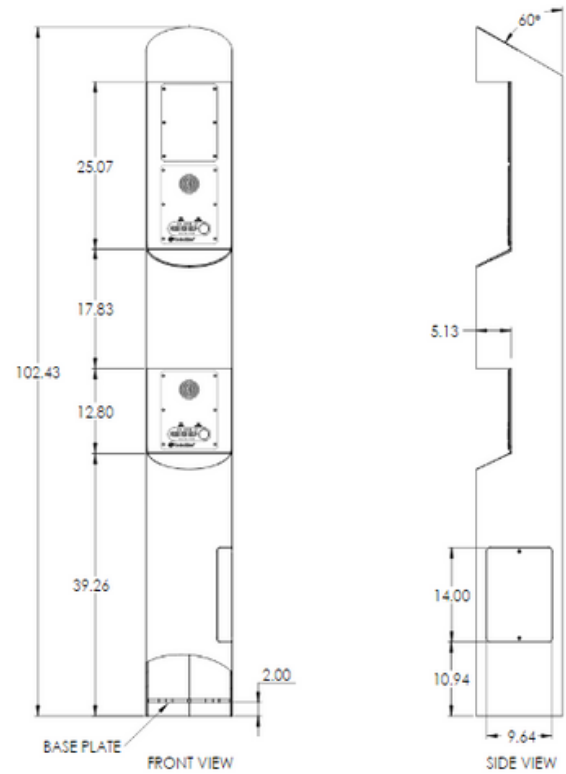
### Single Truck & Dual Car Faceplate



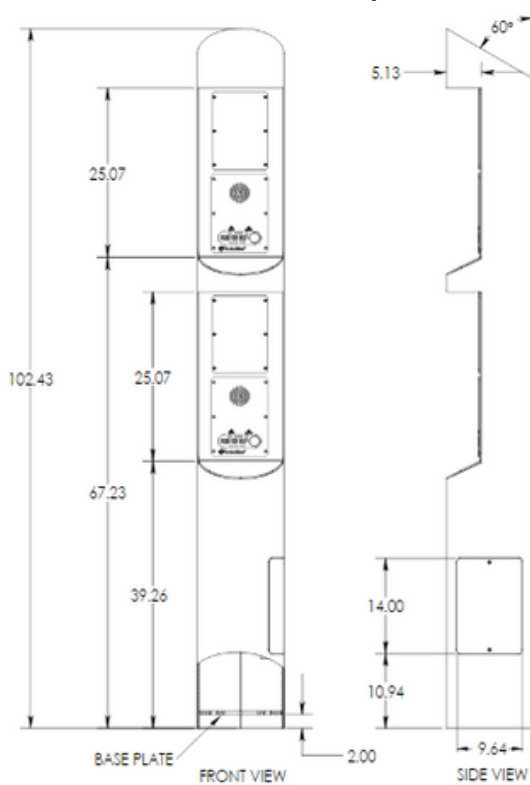
### Dual Truck Faceplate



### Dual Truck & Single Car Faceplate

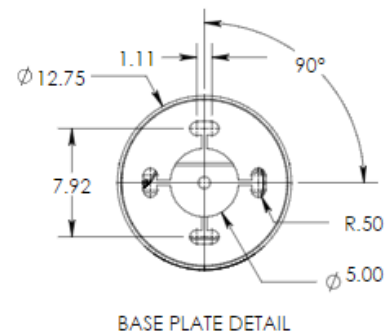


### Dual Truck & Dual Car Faceplate



### Mounting Schematics

\*Applies to all shown CB 9-t configurations



Note: Specifications subject to change without notice or obligation on the part of Code Blue Corporation.