



Product Description

The **CB 2-a** wall-mounted Help Point® is built with the end user, property owner and installer in mind. With a sleek profile that is slim enough to be ADA compliant on any wall, its lightweight yet highly durable two-piece stainless steel construction makes installation easy for a single person. High intensity LED beacon/strobe and faceplate lights provide high visibility for the hands-free emergency speakerphone and make it an excellent choice for parking decks, dorm entrances, hallways and public transit centers.

Standard Features

- ✓ Durable stainless steel construction
- ✓ Modern, contemporary design
- ✓ ADA compliant depth
- ✓ LED beacon/strobe
- ✓ Faceplate light
- ✓ Two-piece construction

Popular Upgrades



ToolVox™ XV
Virtual Machine



ToolVox™ XS
Server



Remote Mounted
Strobe



Hearing Loop



Technical Features

Specifications

- **Height:** 29.79" (75.67 cm)
- **Width:** 11.90" (30.23 cm)
- **Depth:** 4" (10.16 cm)
- **Weight:** 25 lbs. (11.34 kg)
- **Material & thickness:** 0.078" stainless steel
- **Standard Power:** 12-24V AC/DC
- **Optional Power:**
 - 120-277V AC
 - PoE

Communication

- **Speakerphone Options**
 - **LS1000/LS2000:** Full Duplex, SIP Compatible VoIP Phone.
 - **IA4100:** Analog full duplex phone.
- **Connection Options**
 - Hardwired
 - Cellular
 - IP Wireless

Lighting

- Beacon/strobe
- Faceplate Light

Style

- **Standard wet coat paint options:**

Safety Blue, Safety Yellow, Safety Red, Gloss White, Bright Silver, Tiger Orange, Midnight Blue, Gloss Black, Dark Bronze, Cardinal Red, Medium Bronze, British Racing Green, Architectural Gray, & Oak Buff.

- **Standard Graphics text options:**


Emergency, Assistance, Help Point, Police, Courtesy, Security, Information

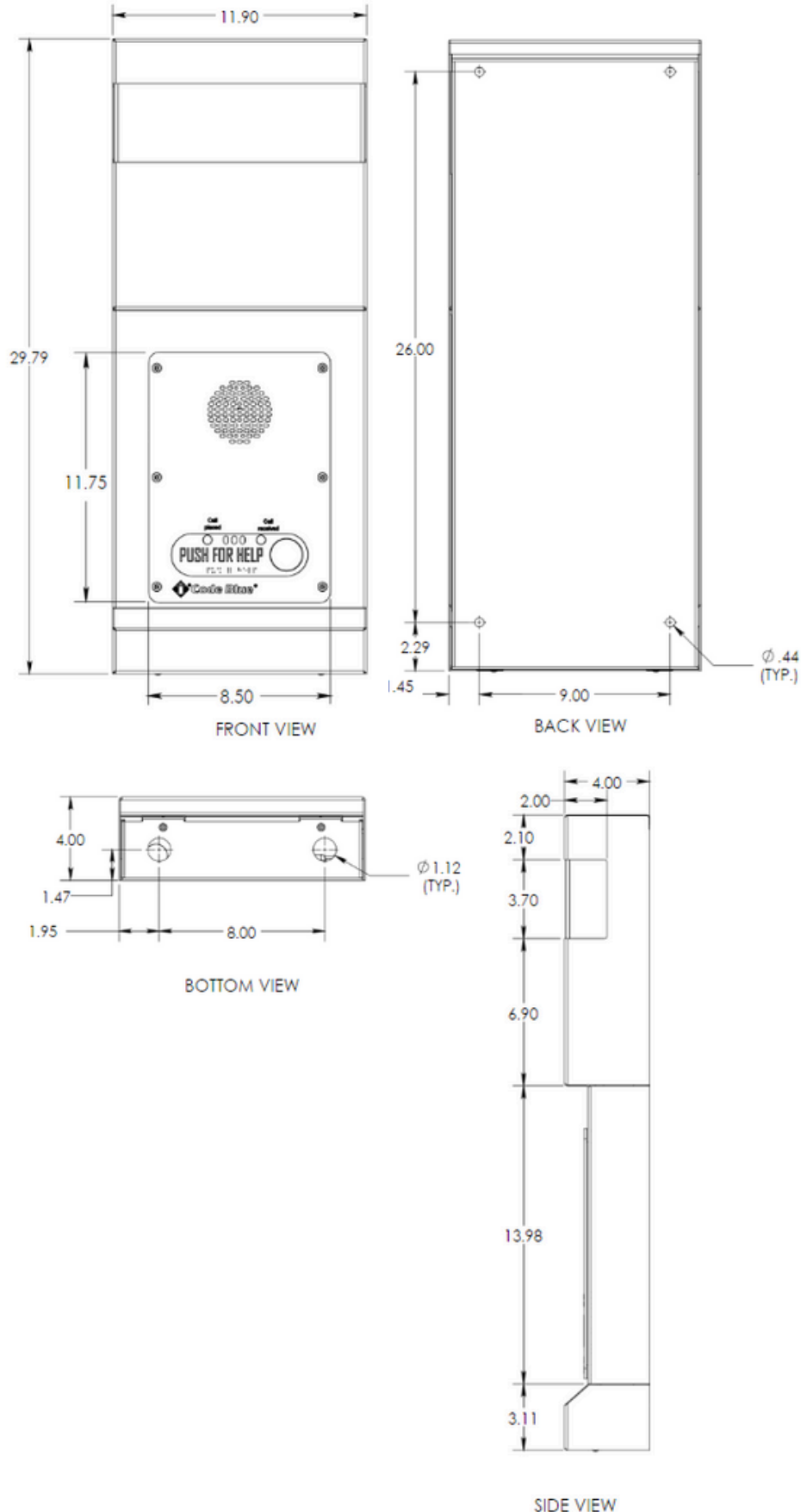
- **Standard Graphics text colors:**

White, Black, Blue, Red, Green, Yellow, Orange, Purple, & Brown

- **Custom Paint Colors, Graphic Colors, Graphic Text & Fonts also available.**

Compliance

- UL 62368-1 
- Built to NEMA 4 Specifications
- Designed to ADA Specifications



Note: Specifications subject to change without notice or obligation on the part of Code Blue Corporation.