

4 and 6 Series Pole Mount Kit

Product Description

The **4 and 6 Series Pole Mount Kit** allows you to mount your call boxes on an existing support beam or light pole that is within reach of a power supply.

Technical Features

Compatible with:



CB 6-s



CB 4-u



CB 4-r



CB4-s

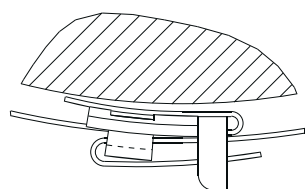
Kit Includes:

- CB4/6 Mounting Bracket
- 10" x 3/4" Flat Stainless Steel Banding
- (2) 3/4" Flat Banding Buckles
- (8) 3/8" Rubber Washers
- (4) 3/8" Stainless Steel Washers
- (4) 3/8" Stainless Steel Nuts

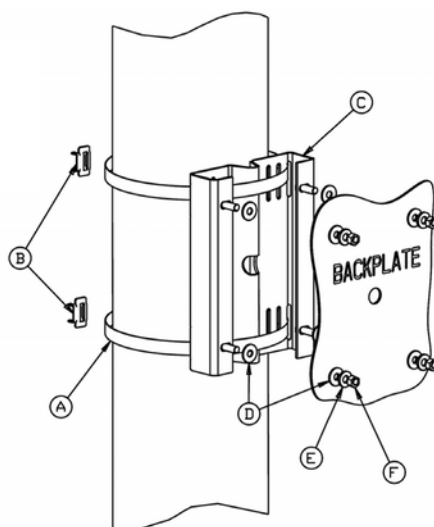


Mounting Schematics

For installation instructions, refer to Admin Guide GU-160.



*Bird Eye
View
(banding)*



Minimum Pole Diameter: 4.0"



NOTE: Banding tool required. Sold separately, part #41441.

Note: Specifications subject to change without notice or obligation on the part of Code Blue Corporation.

CB 2 Series Pole Mount Kit



Product Description

The **2 Series Pole Mount Kit** allows you to mount your call boxes on an existing support beam or light pole that is within reach of a power supply.

Compatible with:



CB 2-a



CB 2-e



CB 2-ap

Kit Includes:

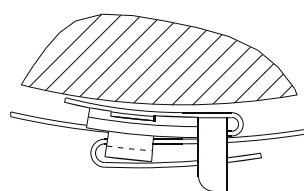
- CB2 Mounting Bracket
- 10" x 3/4" Flat Stainless Steel Banding
- (2) 3/4" Flat Banding Buckles
- (8) 3/8" Rubber Washers
- (4) 3/8" Stainless Steel Washers
- (4) 3/8" Stainless Steel Nuts



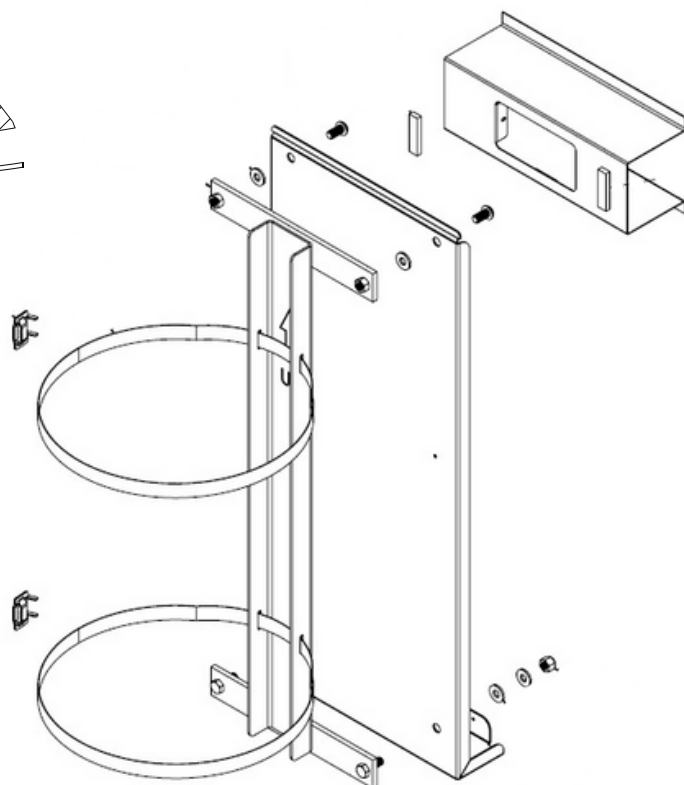
NOTE: Banding tool required. Sold separately, part #41441.

Mounting Schematics

For complete installation instructions, refer to CB 2 Series Admin Guide GU-149.

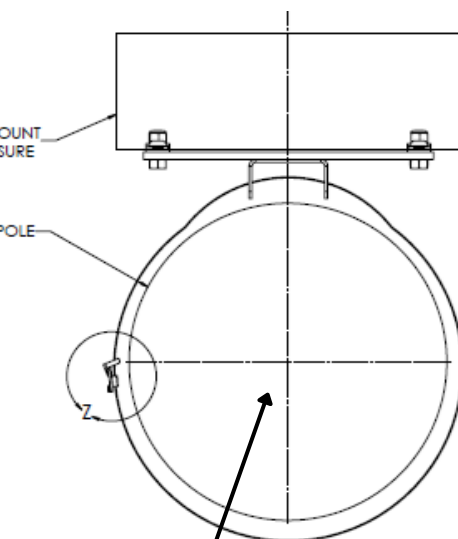


*Bird Eye View
(banding)*



WALL MOUNT
ENCLOSURE

POLE



Minimum Pole Diameter: 4.0"

Note: Specifications subject to change without notice or obligation on the part of Code Blue Corporation.

WM 180 Pole Mount Kit

Product Description

The **WM180 Pole Mount Kit** allows you to mount your 180 degree Audio Paging unit on an existing support beam or light pole that is within reach of a power supply.

Technical Features

Compatible with:

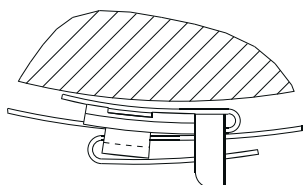


**WM 180 Audio Paging
Speaker**

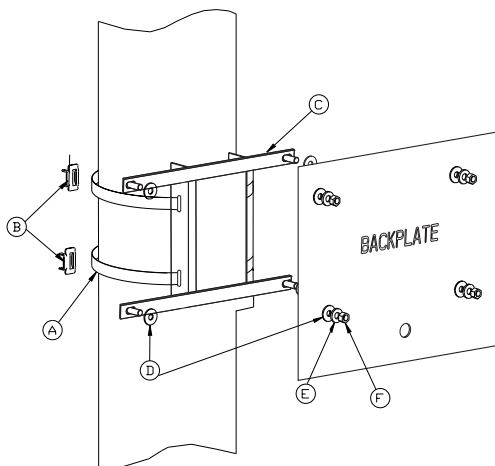
Kit Includes:

- WM 180 Mounting Bracket
- 10" x 3/4" Flat Stainless Steel Banding
- (2) 3/4" Flat Banding Buckles
- (8) 3/8" Rubber Washers
- (4) 3/8" Stainless Steel Washers
- (4) 3/8" Stainless Steel Nuts

Mounting Schematics



*Bird Eye
View
(banding)*



NOTE: Banding tool required. Sold separately, part #41441.

Minimum Pole Diameter: 4.0"

Note: Specifications subject to change without notice or obligation on the part of Code Blue Corporation.