



## Product Description

The **Solar Audio Paging System** for our CB1-W Solar Help Point provides a solar-powered audio unit with 6 speakers for a 360° audio coverage to deliver a very high-powered speaker system for mass notification, two-way communication.

New and improved  
Solar panel technology  
in partnership with:

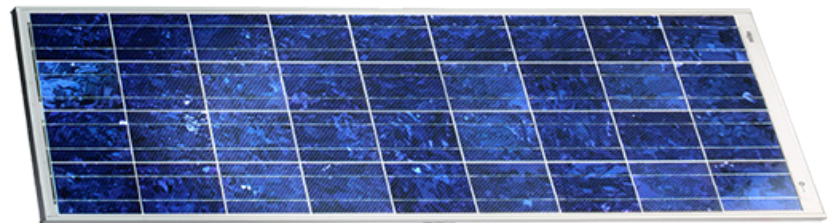


## Standard Features

- ✓ Solar power delivery with 180W solar panel.
- ✓ Increased audio coverage with 6 speakers for a 360° circumference.
- ✓ Frequency range of 450-8000 Hertz.
- ✓ Filters out low frequency noises and reduces ambient noise distortions.
- ✓ Full range 20 to 20kHz Bandwidth Programmed to support voice range.
- ✓ Input audio gain adjustment at the amplifier.

## Solar Benefits

- Efficient power delivery even in shady or challenging weather conditions
- Long battery lifecycle and panel life
- Over 2,000 Wh (watt-hours) of energy storage in battery bank
- High efficiency solar cells = maximum power output circuits protected by hydraulic-magnetic breakers to provide protection at extreme temperatures



solar audio  
paging



# Technical Features



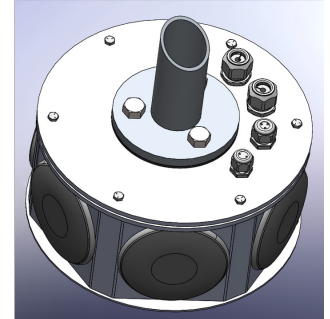
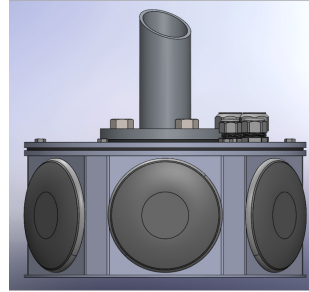
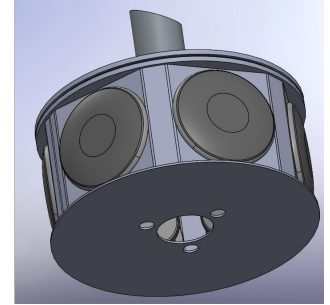
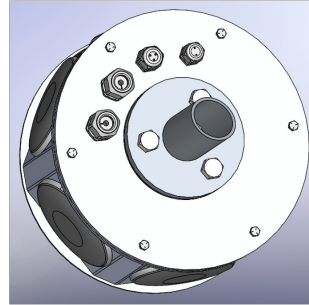
## Available for the:

- CB 1-W Solar Tower



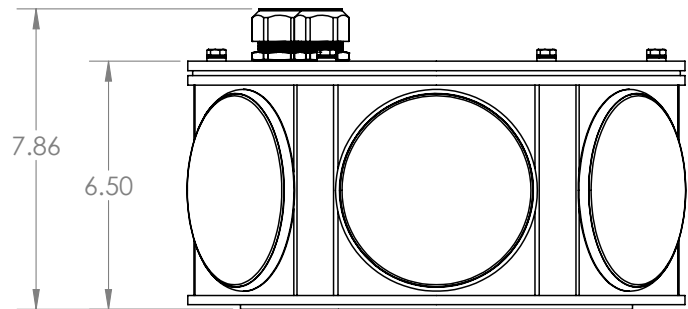
## Specifications

- **Height:** 6" (15.24 cm)
- **Width:** 13" (33.02cm)
- **Weight:** (entire unit): 37 lbs.
- **Install weight:** 28 lbs.
- **Speakers:** 6
- **Material:**
  - **Speakers:** Acrylic cloth
  - **Housing:** Carbon Steel
- **Power:** 12V DC - From Solar Powered System
- **Power Range:** 15 W per speaker (90 W total)



## Speakers

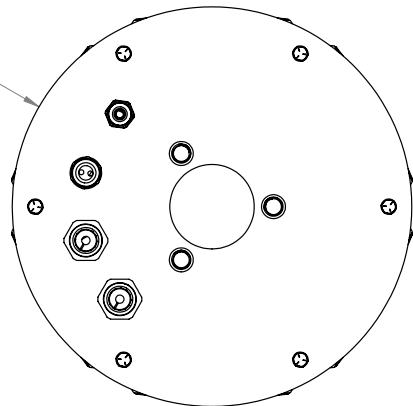
- **Size, Diameter:** 5" (12.7 cm)
- **Power Capacity:** 15 W
- **Impedance:** 8 Ohms per speaker
- **Frequency Response:** 400-8000 Hz
- **Frequency Range:** 450 - 8,000 Hz
- **Resonant Frequency:** 726 Fs



## Amplifier

- **Load Resistance:** 2.4 ohms
- **Output Power:** 1x100 (20Hz-20kHz, 0.1% THD)
- **Maximum Output Power:** 100 (20Hz-20kHz, 1% THD)
- **Distortion:** 10%
- **Signal to Noise:** 102 dB
- **Sensitivity:** 102 dB SPL

Ø 13.00



## Style

- **Standard wet coat colors:** Dark Bronze, Gloss White, Gloss Black, Safety Blue, Safety Red, Safety Yellow, Bright Silver
- **Custom colors available**

Note: Specifications subject to change without notice or obligation on the part of Code Blue Corporation.