

Did you know that there is a virtual 3D Tour of our showroom available on our website?

This guide will take you through navigating the 3D Tour of our showroom and provide some basic details of the content available within it.

If you have any questions, please email customerservice@codeblue.com or technicalsupport@codeblue.com.

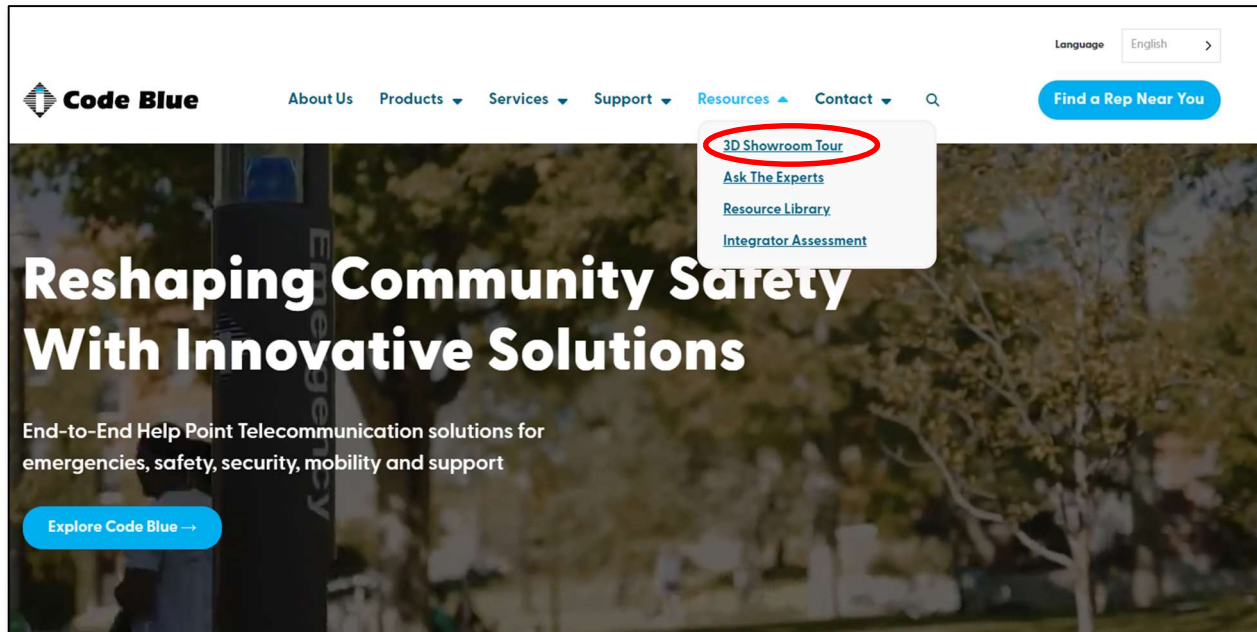
Table of Contents

Section	Description	Page #
1	The Basics	2
2	Navigating the Tour	4
3	Tour Content	12

Part 1 - The Basics

Where do I find the 3D Tour on our website?

- It can be accessed directly by using the following URL:
 - www.codeblue.com/3d-tour/
- It can also be found in the “Resources” tab on the website’s main menu.



Why do we have this available?

- It provides a behind-the-scenes look at our facility and allows people to view our product offerings in a bit of a non-traditional format. Seeing many of our options in one place opens up the possibility of customers seeing something that they were previously unaware of Code Blue being able to provide.
- The tour also offers information related to product add-ons & common applications as well as easy to use links to product sheets and product pages within our website.

Do you need special access to view the tour?

- No. The 3D tour is publicly available on our website.



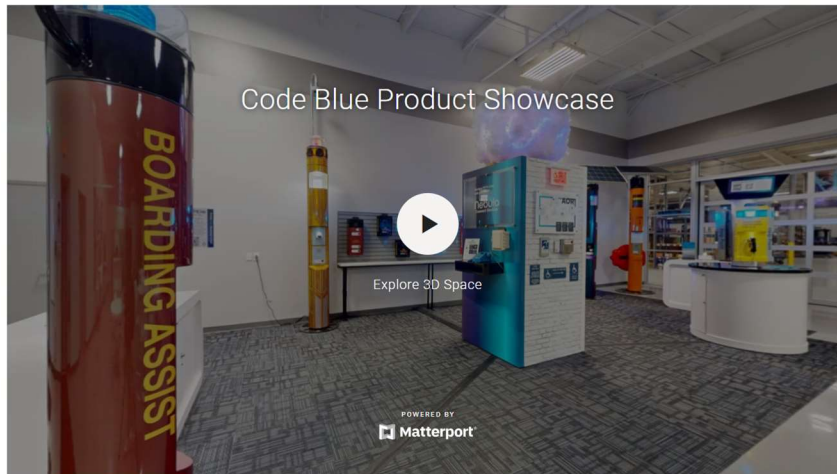
What products will I find on the tour?

- Almost all of our Help Point® enclosures are displayed, including towers and wall mounts.
- All of our speakerphone options are represented including Centry®, IA4100, IP1500, IP2500, LS1000, & LS2000.
- Accessories & upgrades such as AOR components, Customized Speakerphone Bezels, Desk Phones, Hearing Loop Kits, & Remote Beacon Strobes.
- Blue Alert Product Suite: Connect, Monitor, Motion, & Portal.

Part 2 - Navigating the Tour

How do I navigate the 3D Tour once I am on the page?

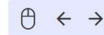
- When you open the 3D Tour web page, your screen will appear as shown below.



Quick Guide:



Select the play button icon at any time to enter Tour mode.
Select the arrow buttons beside it to skip between scenes.



Click and drag or use the left and right arrow keys to turn the camera.



Click with the mouse or use the forward and back arrow keys to move around the space.



- On the left side of the page is the actual 3D Tour content and on the right side of the page is a basic navigation guide (shown below in more detail) explaining how to use your computer mouse to explore the showroom.

Quick Guide:



Select the play button icon at any time to enter Tour mode.
Select the arrow buttons beside it to skip between scenes.



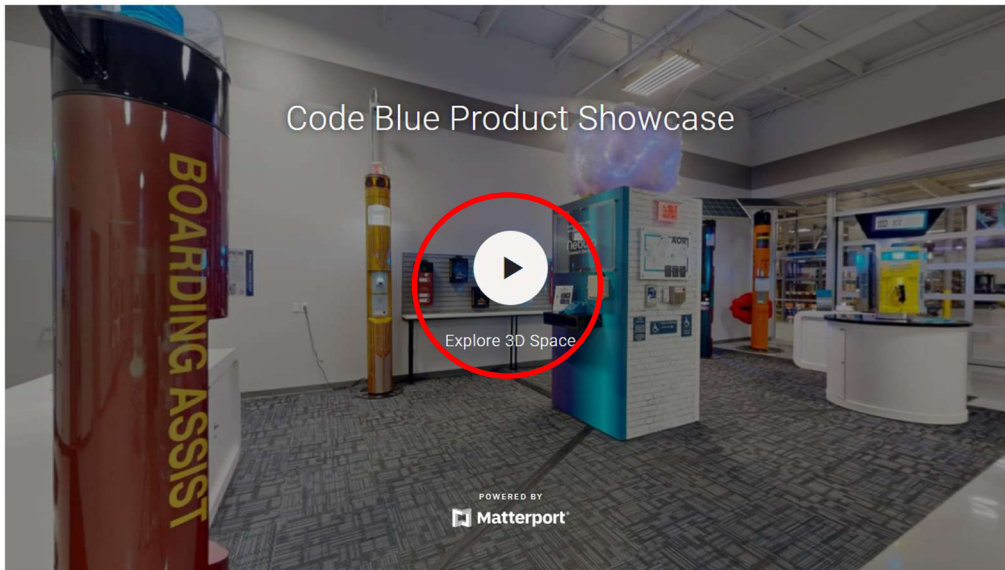
Click and drag or use the left and right arrow keys to turn the camera.



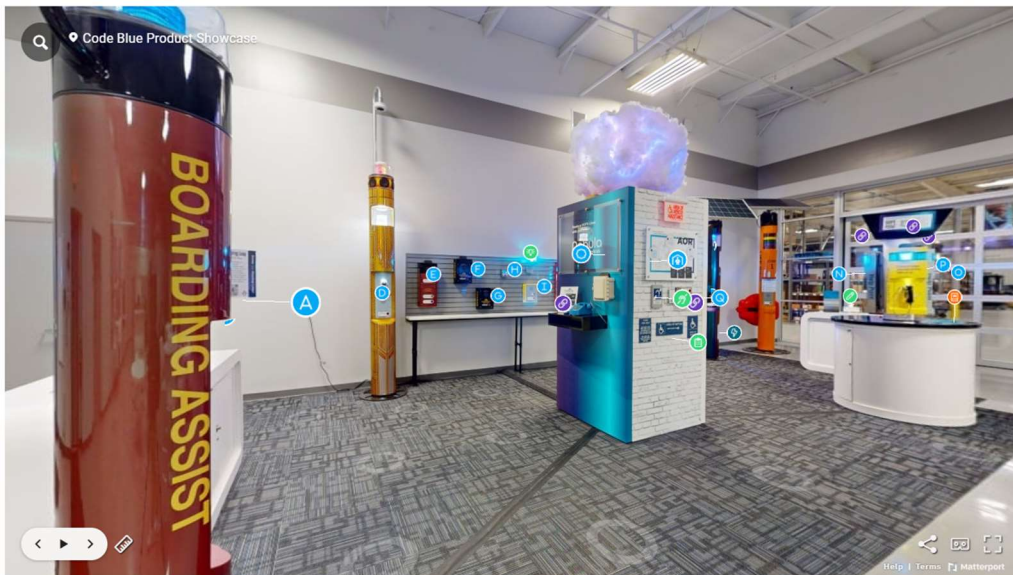
Click with the mouse or use the forward and back arrow keys to move around the space.



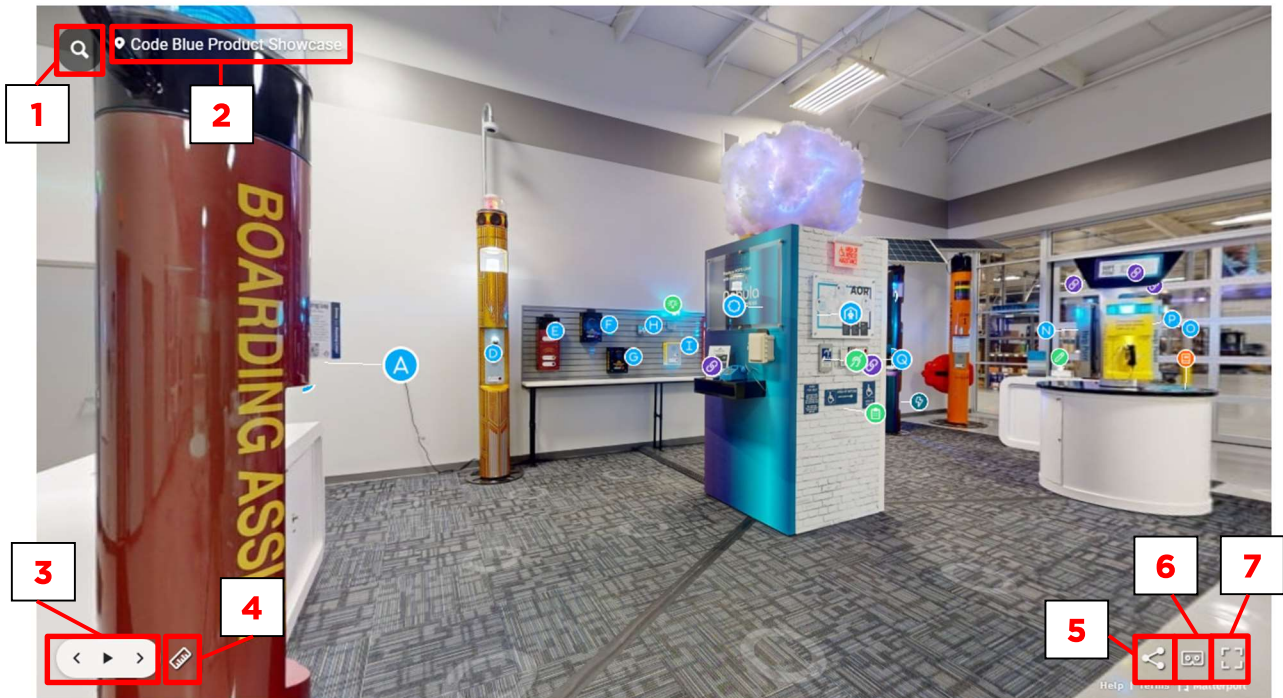
- When you are ready to begin exploring the showroom, click the play button in the middle of the Product Showcase window.



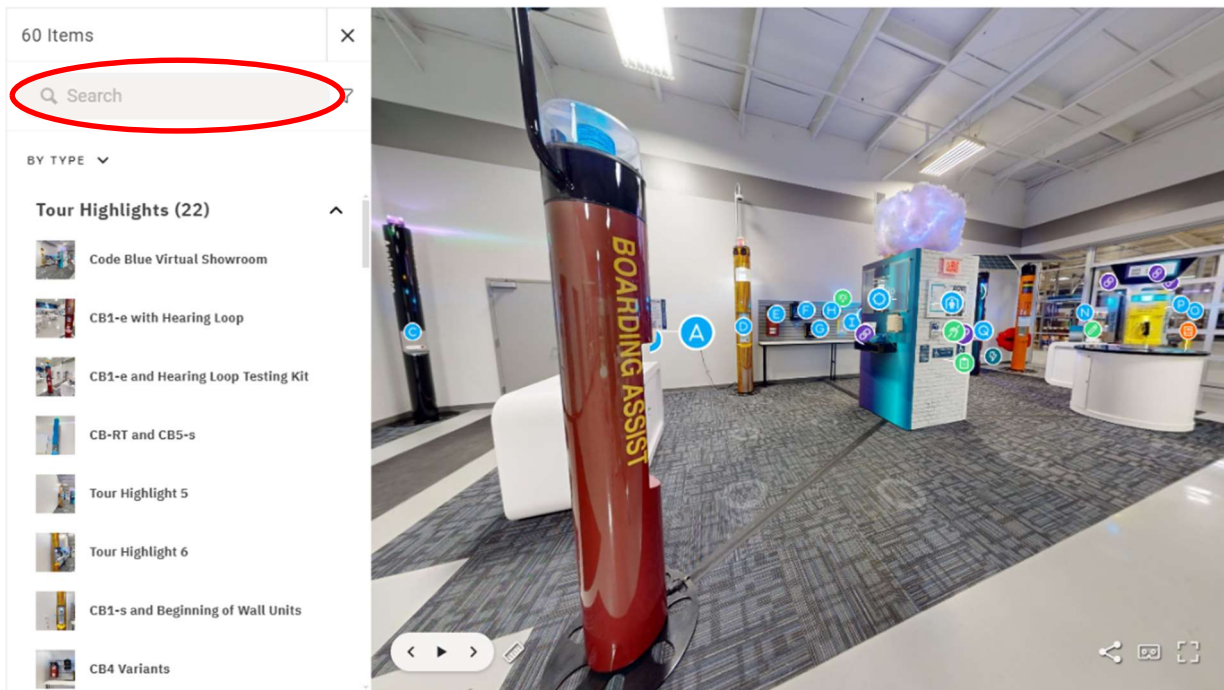
- This will activate the tour & the content will appear as pictured below.



- From this starting point, you will have multiple options to choose from, which are detailed on the next page.

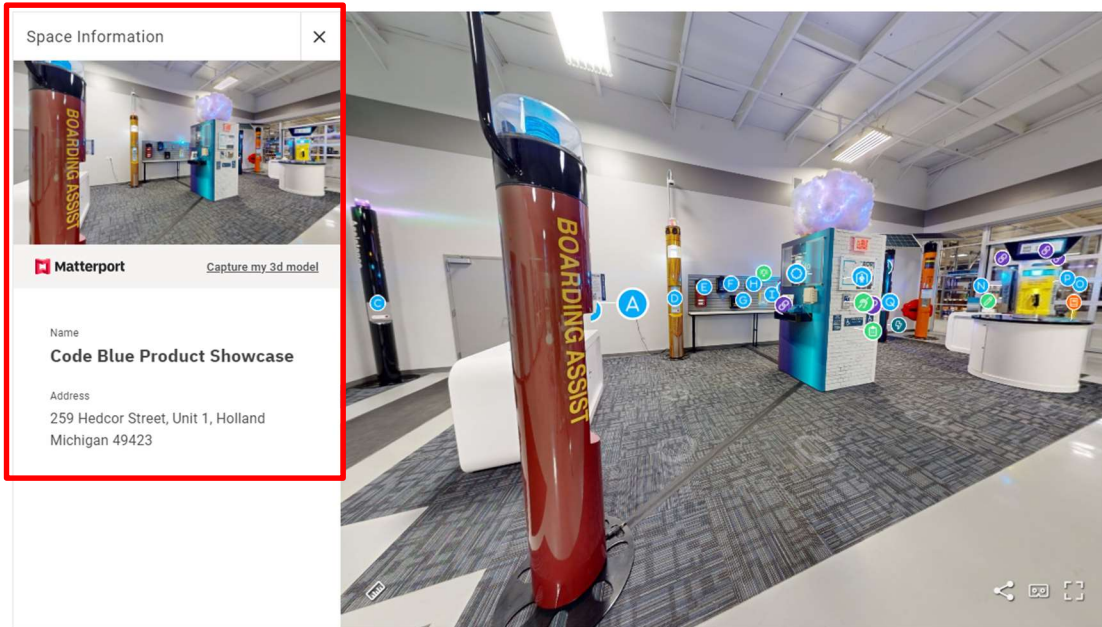


- From here you can begin navigating around the showroom using your mouse & following the Quick Guide Instructions.
- You can also utilize the following options on this page:
 1. **Search Feature** - Shows selectable options within the tour and the ability to search for a specific product by typing in the search bar.

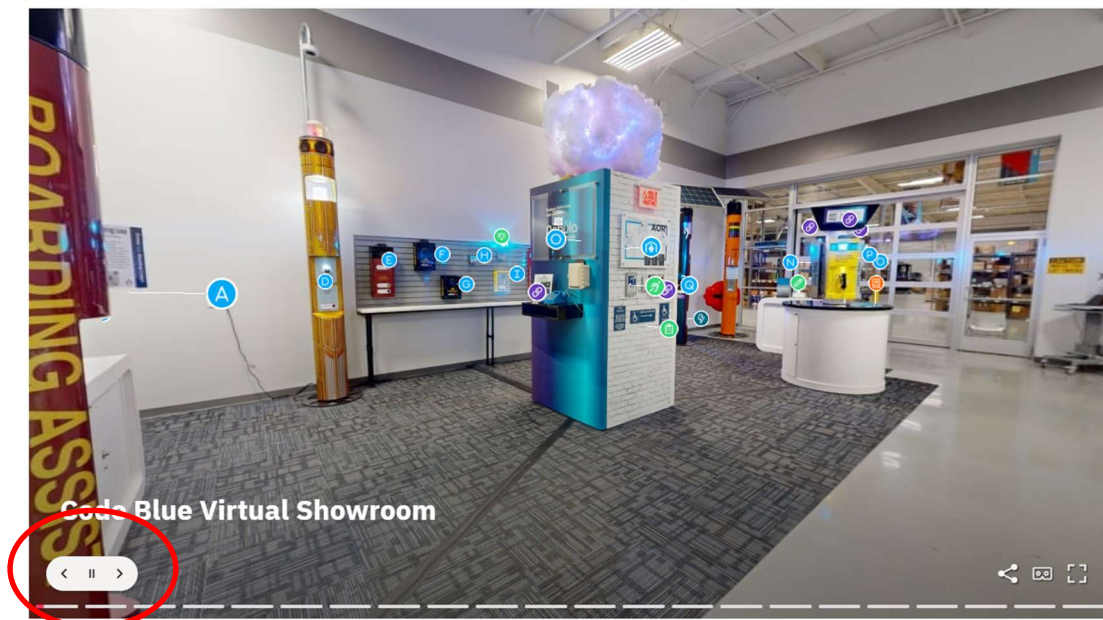




2. **Space Information** - Clicking this option reveals where the tour you are viewing is located, in this case our address is displayed.

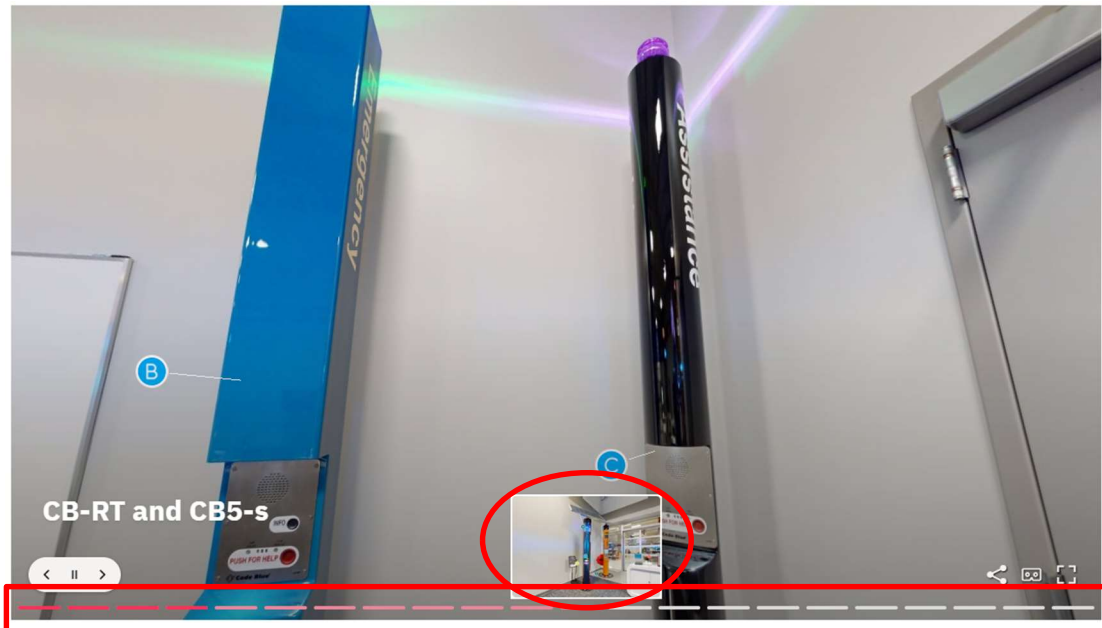


3. **Play Button** - Clicking the play button will begin an automated tour of the entire showroom. At any point during the automated tour, you may click the screen to pause it and select the information you want to view more of. You can use the Previous & Next arrows located on either side of the play button to advance to the next area or go back to a previous area if needed.

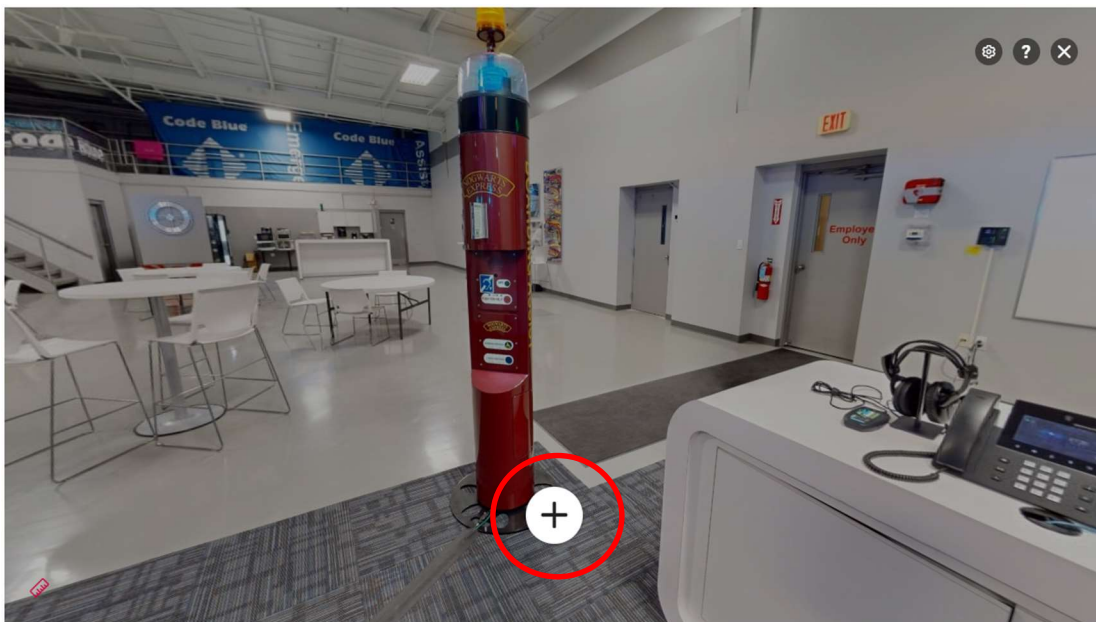




In addition to the navigation arrows, you can also scroll over the progress bar to see previews of different sections while the automated tour is active. You can also click a specific area and it will automatically advance the tour to that location.



4. **Measurement Mode** - This allows a user to gather basic product measurements on their own while viewing an area of the showroom. Begin by selecting the ruler icon, then click the “+” sign that appears to start a new measurement.

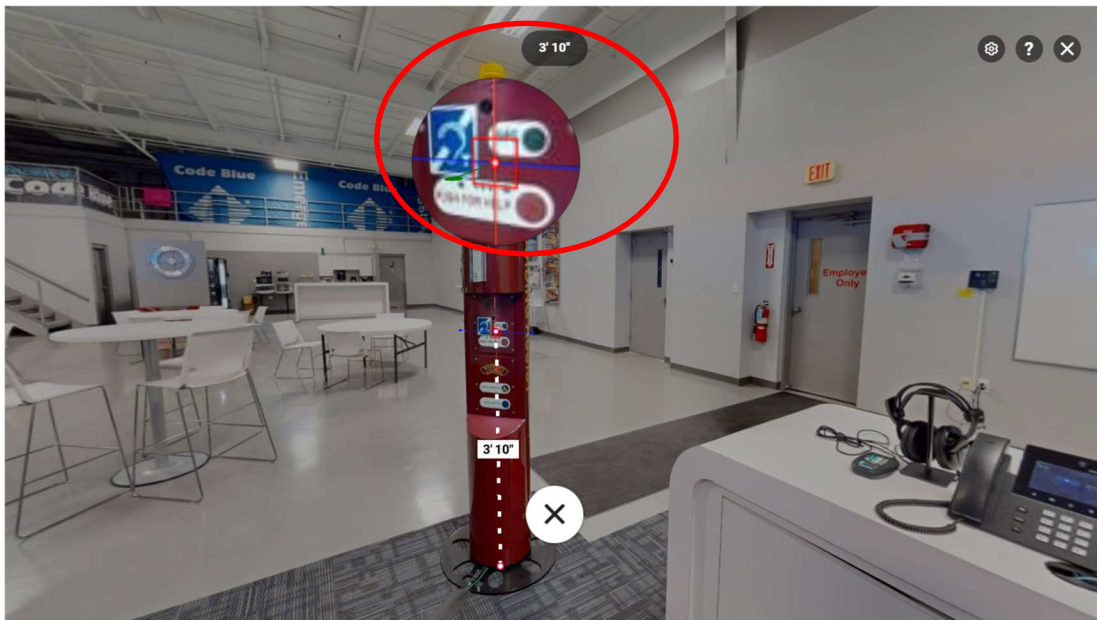




Next, select the point you want to begin your measurement from. A zoomed in bubble will automatically appear to help you see where exactly you are picking.

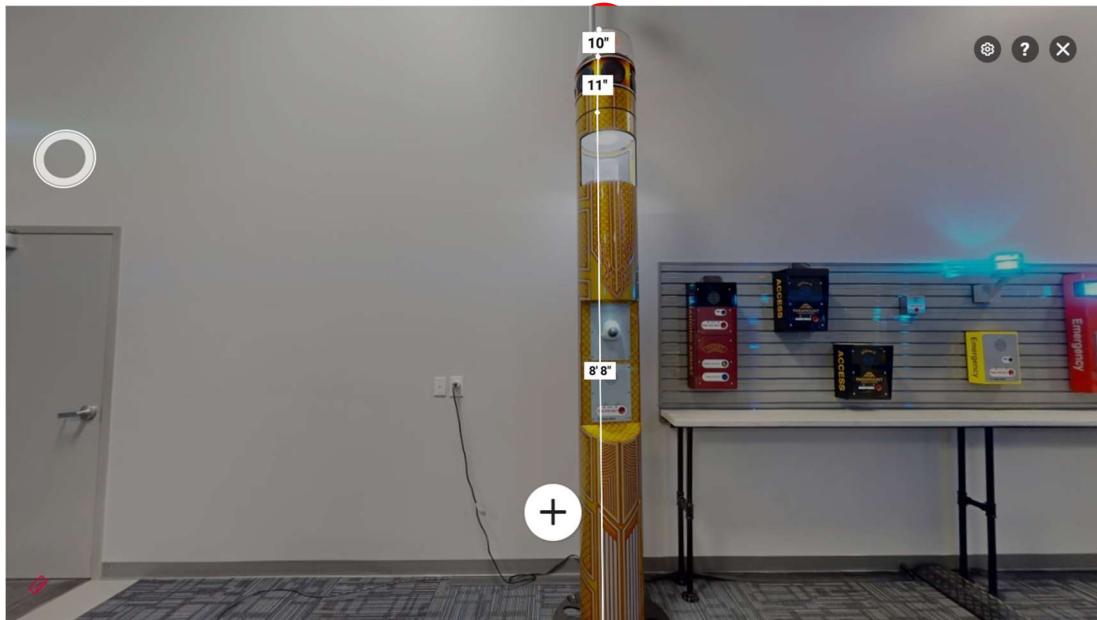


After selecting your starting point, move your mouse to the point you want to measure. A measurement guide will automatically follow the path of your mouse and the same zoomed in bubble will remain.

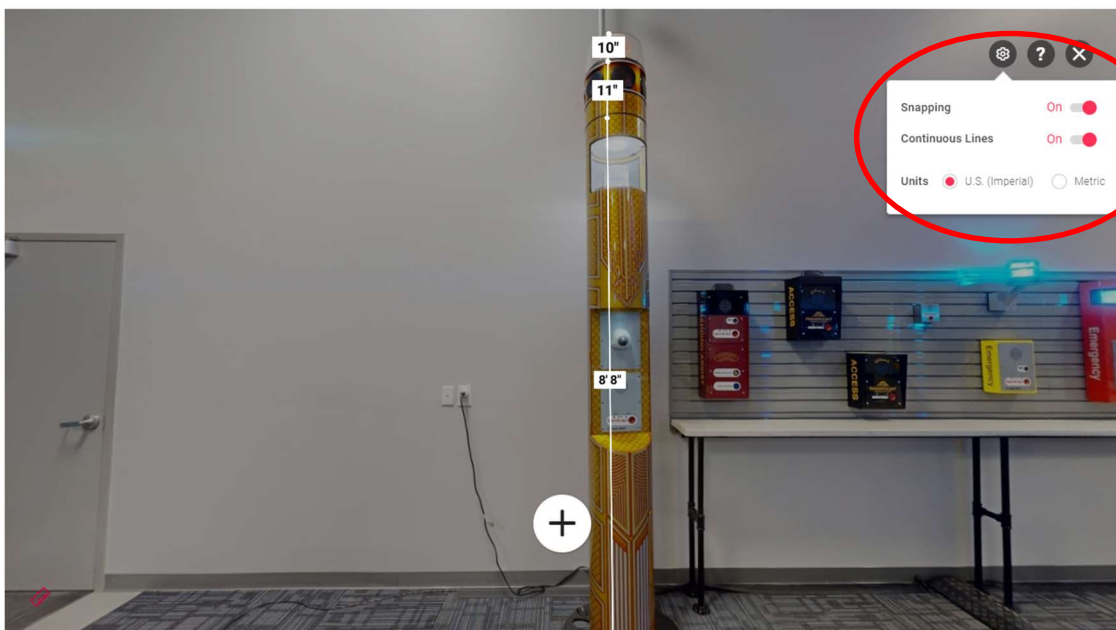


Once you have your measurement, you can press the Escape key on your keyboard or click the “X” in the middle of the tour window.

You may also click on a location on the screen to capture a secondary measurement, if needed.



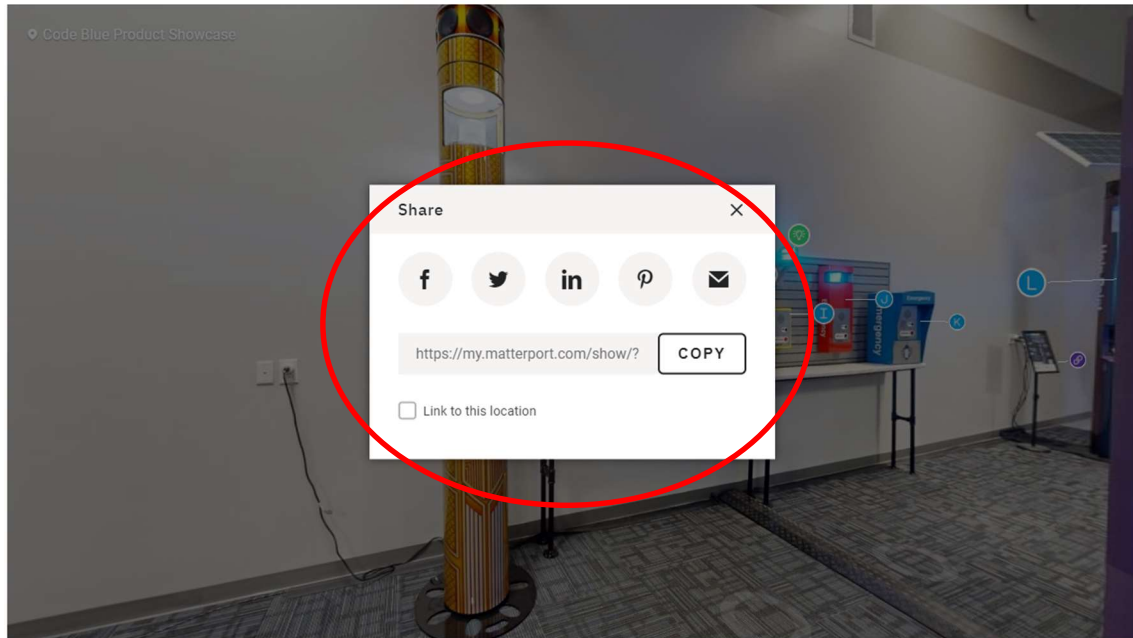
You can utilize the setting menu in measurement mode to select between Imperial & Metric measurements as well as adjusting the snapping & continuous lines options.



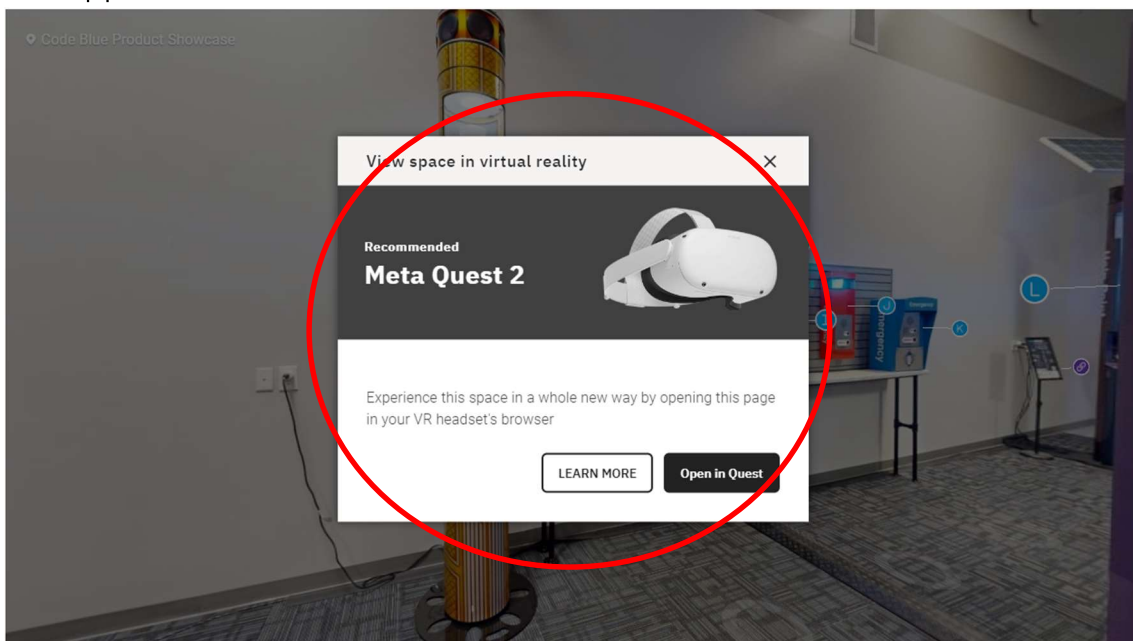
To exit measurement mode, click the “x” in the upper right corner of the tour window.



5. **Share This Space** - Click this icon to bring up an info box providing ways to share the Showroom Tour via social media or the ability to copy the URL link.



6. **View in VR** - Click this icon to experience the Virtual Tour in a VR Headset, if applicable.



7. **View Fullscreen** - Click this icon to take the tour to a Full Screen View.

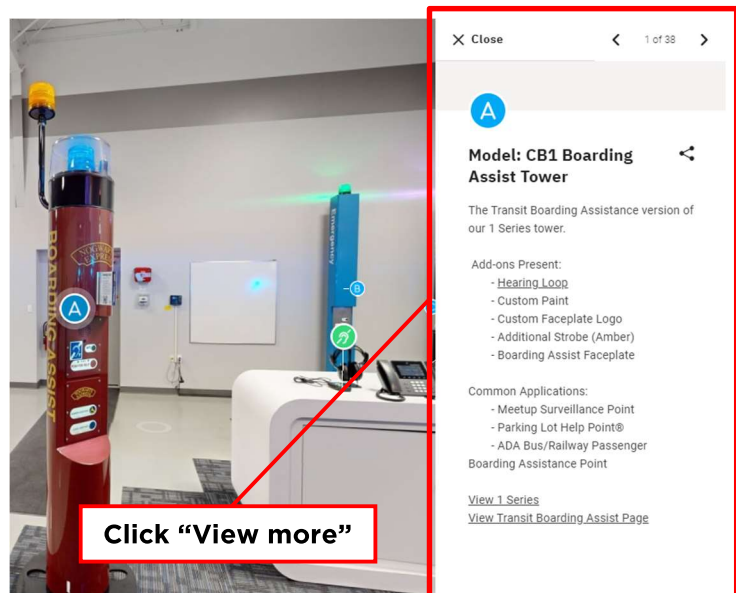
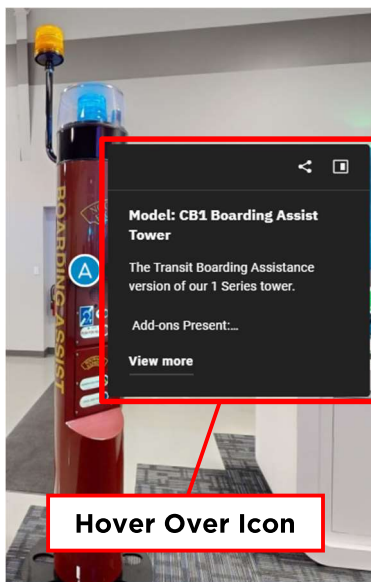
Part 3 – 3D Tour Content

What do all of the different colored icons mean?

- When viewing the tour, you will come across several different colored icons, providing a variety of details and information related to a specific product.

Product Information

- When hovering over an icon of this color, an information box will appear with basic product information. Click the “View more” to generate a side bar containing more details about the product, how it is shown, what add-ons are present, common applications and links to information such as web pages & product sheets.

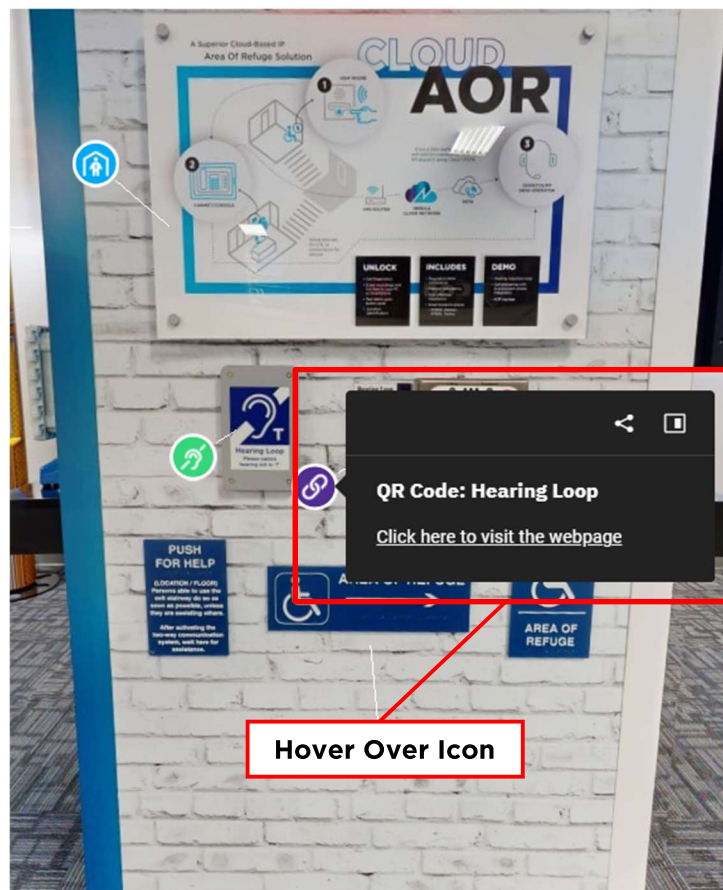


Accessory/Upgrade

- An icon of this color denotes an item that is an accessory or upgrade to a Code Blue Help Point®. Navigation & information contained on these options is the same as Product Information icons.

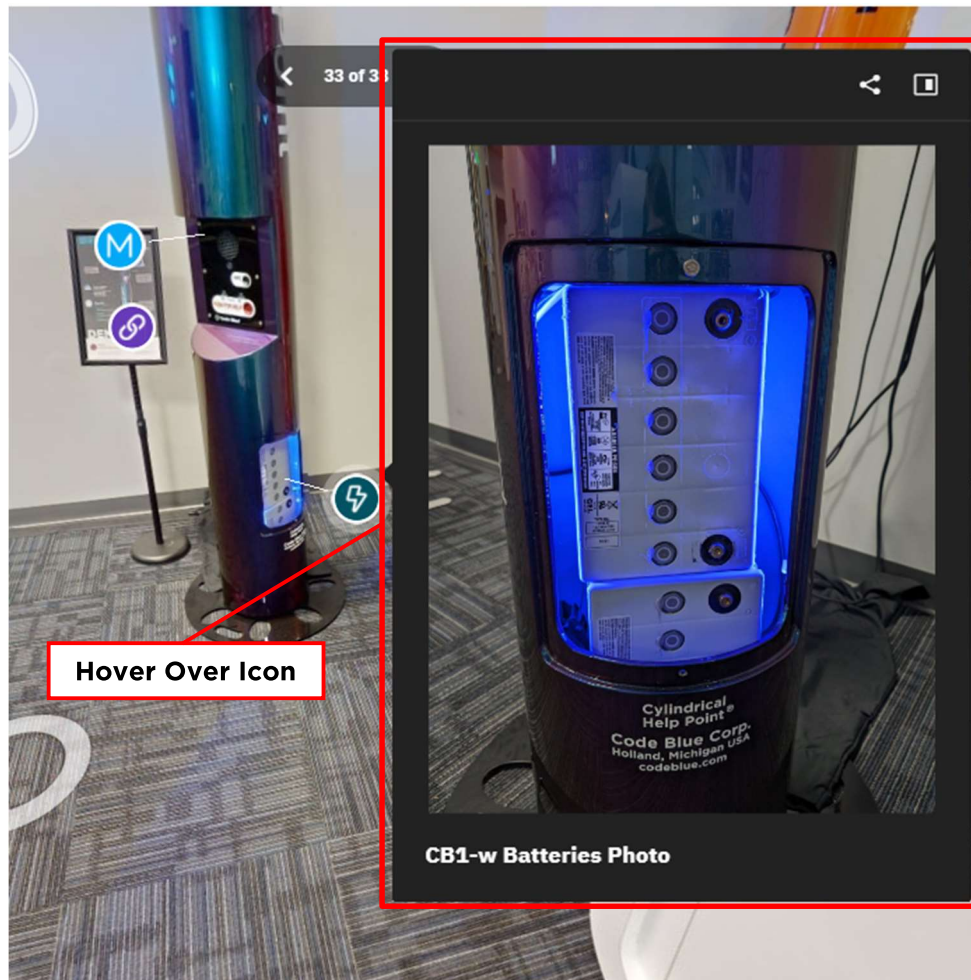
QR Code Link

- We have several QR codes present around the showroom that allow visitors to access more information about a particular topic by scanning the code. In order to provide a similar experience, links have been added to the Virtual Tour via icons of this color to allow users accessibility to the same resources.
- While hovering over the icon, an information box will appear, containing a link to visit the webpage dedicated to the particular content.



i Additional Photos

- Sometimes additional pictures can help explain a lot. For some of our items on the tour, additional pictures have been provided to give more detail or explanation. These selections are noted by icons of this color. When you hover over the icon, the additional photo will automatically appear.



- i** Code Blue Catalog
 - When a guest visits our showroom in-person, one of the most common things they leave with is one of our Product Catalogs. This is something you can leave our tour with, virtually, as well! When hovering over the icon of this color, an information box will appear with a link to our catalog webpage, allowing the viewer to download a copy of one of our catalogs.

