



Code Blue

About
Code Blue

What to
Consider?

Verticals
Served

Safety &
Security

Products &
Services

Additional
options to
consider

Blue Alert®

Platform
Options

**Nebula™
Cloud**

AOR
Applications

Elevator
Connect

Design the
right Solution

Website/
Catalog

About Code Blue



Michigan Made

Our products can be found in thousands of locations around the world, but we are proud to say that we are based in **Holland, Michigan USA.**



About Code Blue



Committed To Our Craft



All Code Blue products are
manufactured in compliance to
the specific requirements outlined
in the Buy American Act.

Purpose for a **HELP POINT**

Improve your
RESPONSE

Promote your
BRAND

Enhance your
**Customer
Service**

Increase your
PRESENCE

**About
Code Blue**

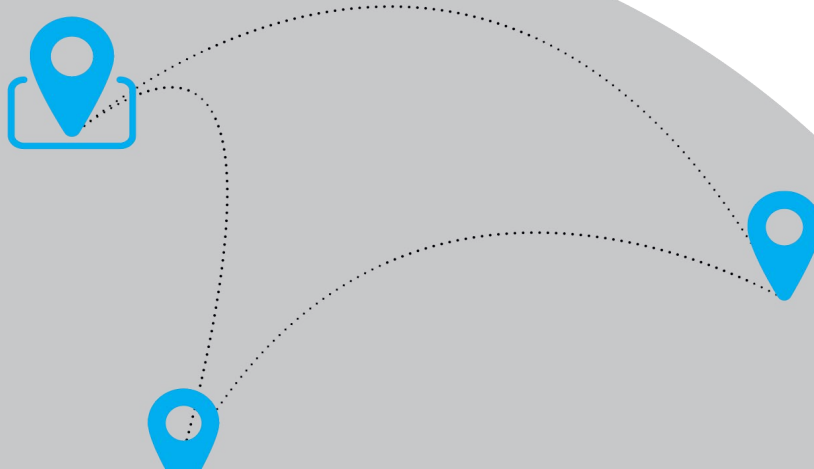


What to Consider?



Location & Mounting

As a rule of thumb, 1 or 2 blue lights should be visible from any location on site.



Wall or
Pole Mount



Freestanding



What to Consider?

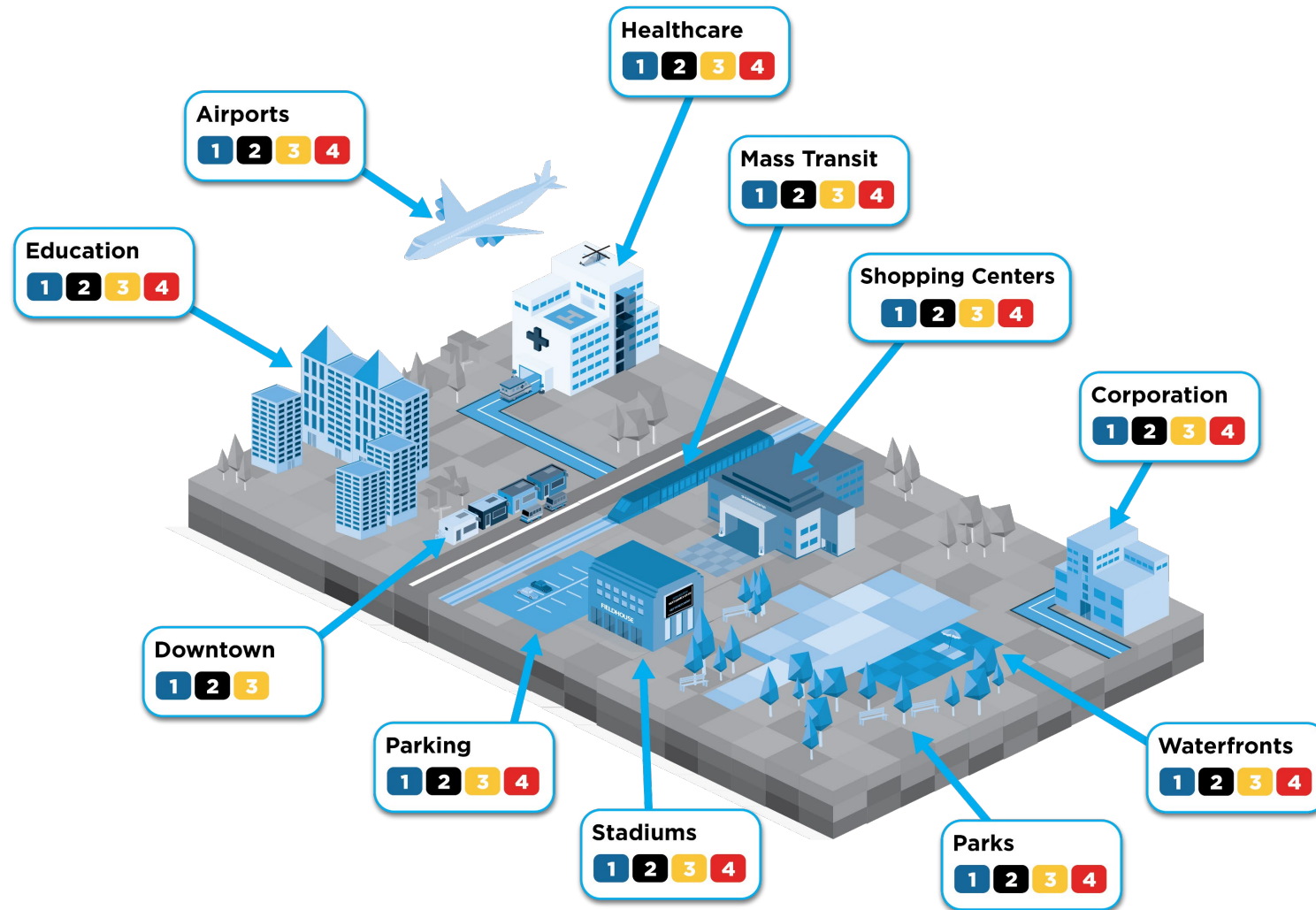


Power & Network

Our Help Point® enclosures can be powered & connected by various options.



Verticals Served



1

Athletic Fields
Beaches
Open Spaces
Paths
Playgrounds
Sidewalks



2

Garages
Gates
Lots



3

Elevators
Entries
Hallways
Stairwells



4

Concourse
Shelters
Stations
Parks
Terminals



Verticals Served



Common Uses

No matter what type of environment you oversee, our products can be tailored to provide safety for any individual in your area.

Open Spaces



Infrastructure



Entry Points



Anchored in Security

Safety & Security

Durability



Accessibility



Scalability



Visibility



Clarity



Interoperability



Anchored in Security

Safety & Security



Alerting



Whether it's our trademarked cylindrical Help Points® or emergency speakerphones, you can be sure that assistance will be available when you need it most.

Responding



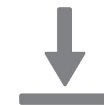
When a situation arises, you can be confident that the right actions will be taken because powerful tools will be in place to help you react and respond.

Managing



Control the flow of communication by connecting multiple networks and systems with our award-winning systems management platform for blue light phones and mass notification software.

Archiving



When an incident occurs, detailed audio and visual information can be securely collected and stored for use during an active investigation and for future reference.

Products & Services



Help Point®

Freestanding or Wall/Pole Mounted

- Industrial, engineering grade graphics
- Energy efficient and highly visible LED lights
- Four coat paint process
- Standard or custom colors and graphics
- Optional second faceplate and public address speakers available.



Products & Services



CB1 Series

Tower Enclosures

Options & Accessories

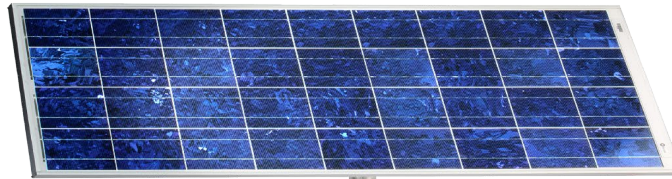


(a)cellular antenna (b)dual faceplate (c)AED housing (d)360° ap speakers
(e)overhead camera mount (f)equipment mounting rings

Popular Applications



CB 1-e



CB 1-s



CB 1-w

Solar panel
technology in
partnership
with:



Products & Services



CB5 Series

Economy Enclosures

Options & Accessories



(a) cellular antenna (b) dual faceplate (c) 360° ap speakers
(d) overhead camera mount

Popular Applications



Open Spaces



Parking Lots



Walkways



CB 5-s



CB 5-p

Products & Services



CB9 Series/CB-RT

Pedestal & Rectangular Enclosures

Options & Accessories



(a)cellular antenna available for the CB9 series
(b)overhead camera mount for the CB 9-T & RT

Popular Applications



Open Spaces



Parking Lots



Walkways



CB 9-s



CB 9-t



CB-RT

Products & Services



CB2 Series

Surface Mount Enclosures

Accessory
cellular antenna



CB 2-a



CB 2-s



CB 2-e



CB 2-ap



CB 2-AED

faceplate
light

faceplate
light

audio
paging
speaker

new
faceplate
camera

Popular Applications



Hallways



Entry Points



Parking Garages/
Lots

Mounting Kit Options



Pole Mount

Products & Services



CB4 Series

Surface Mount Enclosures

Accessories

cellular antenna
remote beacon/
strobe



CB 4-s



CB 4-r



CB 4-sd



CB 4-u

Pair with our **NightCharge®** power option and operate 24 hours per day.

Popular Applications



Gates



Parking Garages/
Lots

Mounting Kit Options



Curb Mount



Pole Mount

CB4 Series

Remote mount LED beacon/strobe

Products & Services



Products
& Services



CB6 & Speakerphones

Flush or Surface Mount Enclosures



Products & Services



CB6 & Speakerphones

Faceplate Options for Enclosure Openings

Enclosure Openings



CB 6-f
FLUSH MOUNT



CB 6-s
SURFACE MOUNT

LS1000

IA4100



SPEAKERPHONES

LS2000



HANDSET PHONES

Products & Services



Customization



- Stainless Steel
- Bright Silver
- Gloss White
- Oak Buff
- Safety Yellow
- Tiger Orange
- Safety Red
- Cardinal Red
- British Racing Green
- Safety Blue
- Midnight Blue
- Medium Bronze
- Dark Bronze
- Architectural Gray
- Gloss Black
- Custom-matched

Paint Colors

Choose from our library of standard colors or have us color-match your exact brand colors in Pantone or RAL.

Side Text

The large reflective text on the side identifies what kind of help users will be getting connected to.

Bezel Text



The text on the call button's bezel further confirms or differentiates the type of call they can make. Models with multiple faceplate openings give way to several bezel text opportunities.

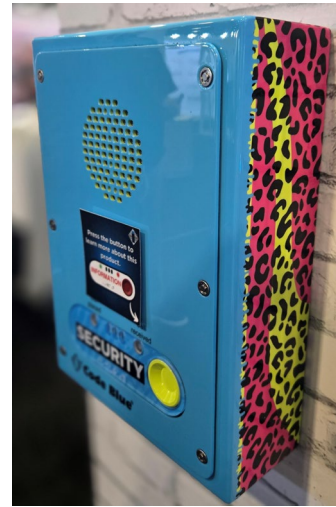
Graphics

Add vinyl and silkscreen graphics of your logo and other design details to customize your Help Point®.

See more customized units!

Customization

Products & Services



Audio Paging Systems

**Additional
Options to
Consider**



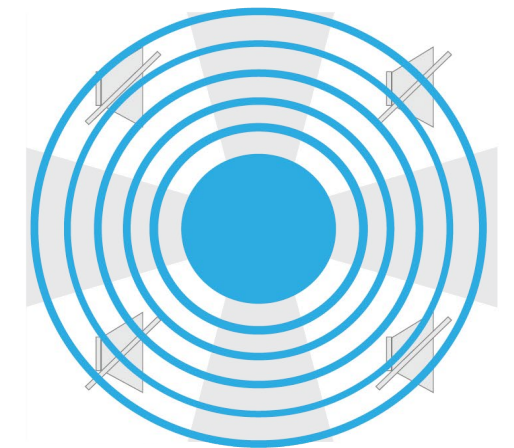
CB2 with Audio Paging Speaker

Designed to
provide maximum
audio clarity.



360° Audio Paging Loudspeaker

A very high-powered speaker system
for mass notification and two-way
communication.



Code Blue

Competition

Advanced Audio Paging License

Add advanced features to your paging and intercom module.



Outbound Notifications

Receive notifications when the button is pressed with the power to interject the call.



Valet-Style Paging

Configure incoming calls when the line is already in use or busy.

- Do Nothing
- Leave a message and play when the group is available
- Leave a message and the message will be played to group as soon as the line is available



Scheduled Paging

Schedule messages at a specific time and day to be broadcasted in a page group.



Multicast Paging

Send and broadcast messages to selected groups of units.



Prepend Recordings (Announcements)

Determine what plays when the button is pressed.

- Nothing
- A beep
- A system recording

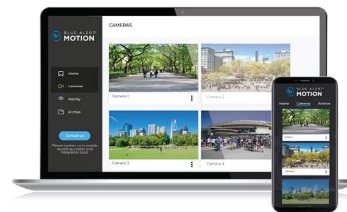
Additional Options to Consider



Camera Options

1. The Newest Configuration:
LS1000 + new faceplate camera
2. Centry faceplate camera
3. Dual opening option for camera
4. Overhead camera mount (camera not included)

Popular Application



 **BLUE ALERT[®]
MOTION**
*A secure hosted event-based
video recording solution built
on world leading streaming and
storage technologies.*



**Additional
Options to
Consider**



Beacon/Strobe

LED Beacon/Strobe light shines even in direct sunlight.

Additional Options to Consider



beacon
strobe



Other option
Area Light

Popular Alternatives



Photocell version

Dawn/dusk transition
delay and transient light
acknowledgement.



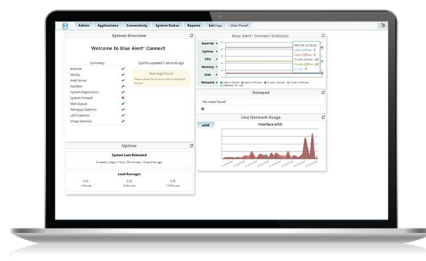
Remote

Wall or pole mount a light with
our adapter bracket mounting
kit.

A highly versatile emergency management platform...

Blue Alert Family

NEW



BLUE ALERT® **CONNECT**

- ✓ Voice Trunking
- ✓ SIP registration
- ✓ Call routing & paging
- ✓ DID's & e911
- ✓ Open to any device

Compatibility:



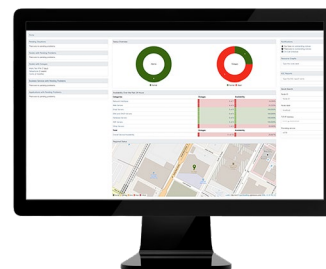
ToolVox XS



ToolVox XV



Nebula Cloud



BLUE ALERT® **MONITOR**

- ✓ Diagnostics of Code Blue phones
- ✓ Capable of supporting third-party devices
- ✓ Any IP network devices & any analog phones

Compatibility:



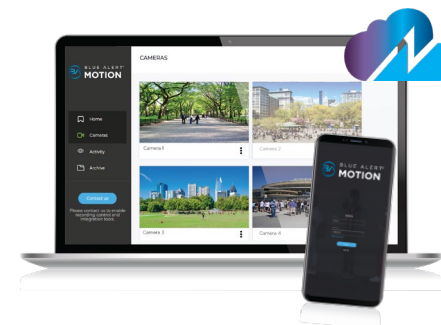
ToolVox XS



ToolVox XV



Nebula Cloud



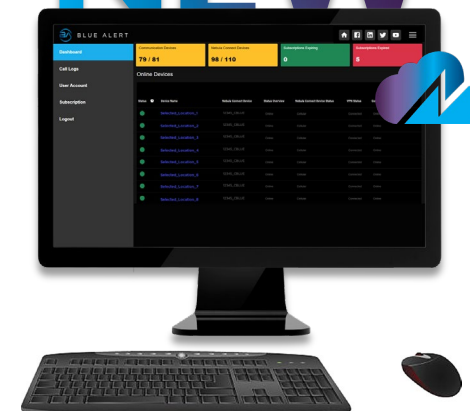
BLUE ALERT® **MOTION**

- ✓ Cloud hosted VMS and mobile app.
- ✓ Video viewing & Activation alerts
- ✓ Video storage & Analytics.

Compatibility:



Nebula Cloud



BLUE ALERT® **PORTAL**

- ✓ Web GUI for end-user customers.
- ✓ Provides current device inventory, status, subscription dates, call logs, and more.

Compatibility:



Nebula Cloud

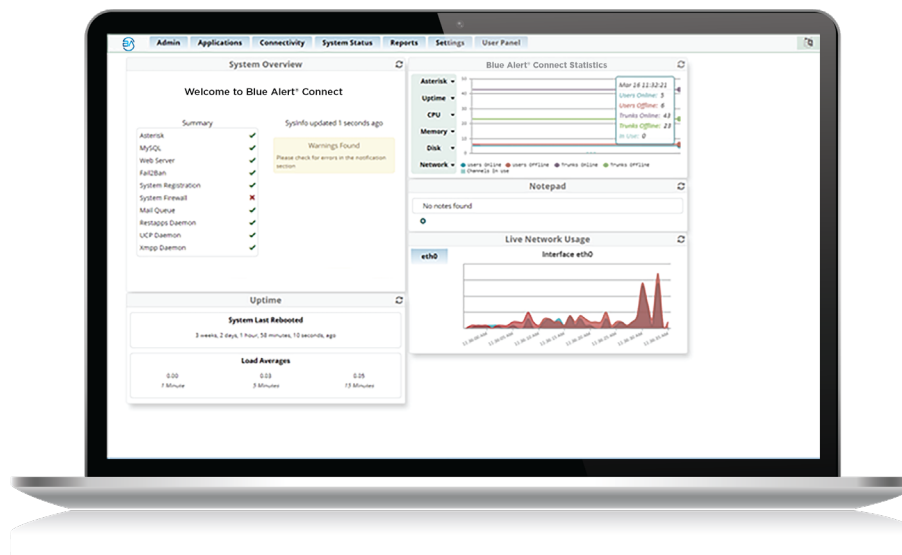


More to come!



BLUE ALERT® CONNECT

Blue Alert



PBX Solution

Connect calls from any unit to the number of your choice.

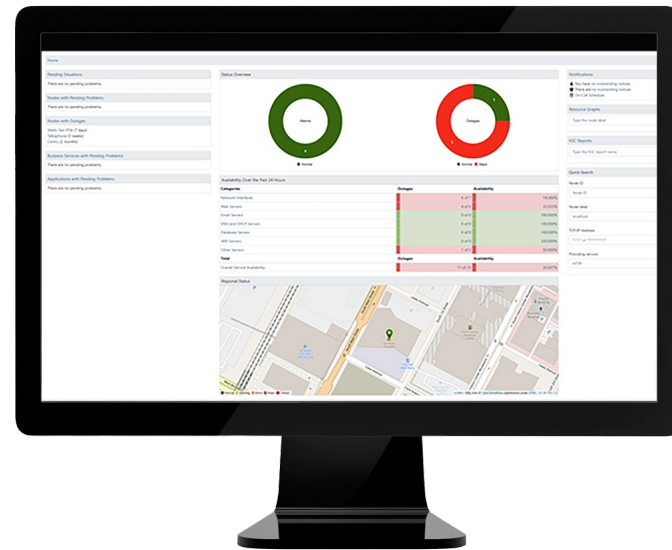
- ✓ Conveniently generate **dial tone** for your Help Point® speakerphones.
- ✓ Bring **IP and Analog** technology together for seamless and flexible communication.
- ✓ Easily set up emergency **paging** notifications.



BLUE ALERT
CONNECT



BLUE ALERT® MONITOR



System Diagnostics & Monitoring

Get reassurance that your Help Points are working, and the benefit of taking timely action when they're not.

- ✓ Eliminate the need to perform manual checks with **continuous remote monitoring** of your phones.
- ✓ **Schedule and run tests** of connected devices to ensure speakers, buttons, microphones and more are working properly.
- ✓ Receive **notifications** when diagnostics fail.



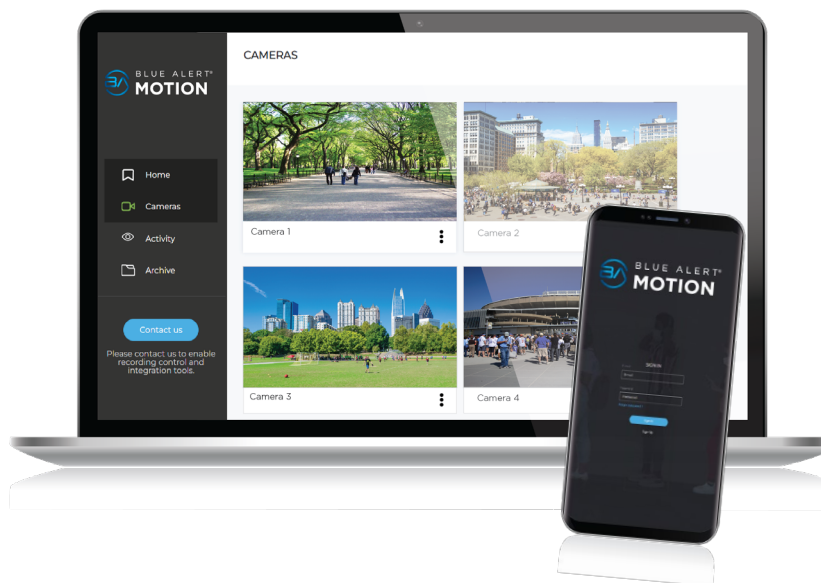
BLUE ALERT
MONITOR





BLUE ALERT[®] MOTION

Blue Alert



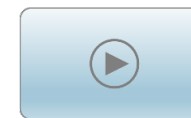
Video Feed and Storage

A secure hosted event-based video recording solution built on world leading streaming and storage technologies.

- ✓ With **cloud-based** recording, your footage is automatically stored in the cloud.
- ✓ **Be notified** via email or text of a new recording. Receive alerts on your smartphone or other devices.
- ✓ Easily **access your event-based video** recordings from anywhere with an internet connection.



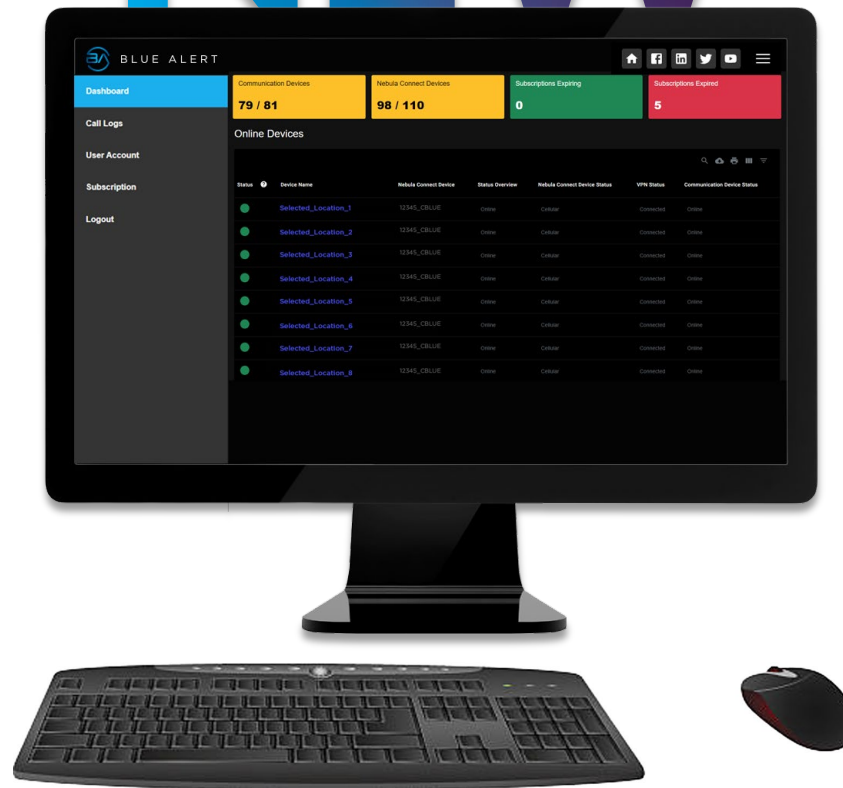
BLUE ALERT
MOTION



Blue Alert



NEW



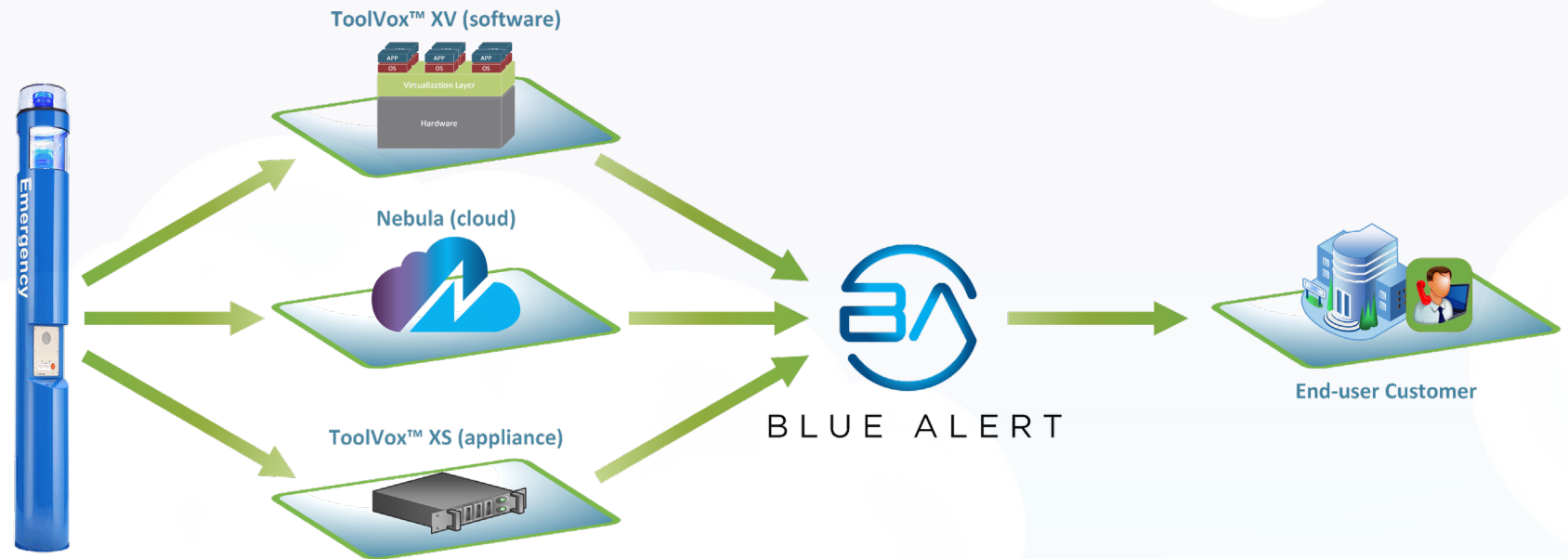
BLUE ALERT® PORTAL

- ✓ Communication Device Inventory
- ✓ Online/Offline Status
- ✓ Cloud Services Subscription Status
- ✓ Call Logs
- ✓ More to come...

Platform Options

for Blue Alert applications

Platform Options



Blue Alert applications are delivered by hardware, software, cloud-hosted or a combination.



Platform Options

for Blue Alert applications

Platform Options



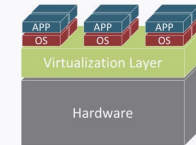
Nebula (cloud)



ToolVox™ XS



ToolVox™ XV



Platform Type	Cloud Platform	Hardware Appliance	Virtual Machine
Primary Functions	Cloud-based SIP registration, multi-destination call routing, e911/DID, diagnostics, supervision, reporting, and more.	SIP registration, call routing, diagnostics, supervision, reporting, and more.	SIP registration, call routing, diagnostics, supervision, reporting, and more.
Platform & Ongoing Maintenance	Maintained by Code Blue, so the system is always up to date.	Customers maintain the hardware, configuration, updates, patches, etc.	Customers provide and maintain the VM platform, configuration, updates, patches, etc.
Network Connectivity	One or more VPN routers using secure, encrypted VPN tunnels for added security	Customer's network	Customer's network

Platform Options



ToolVox™ + Nebula
Platforms



IA4100



IP5000



IP2500



IP1500



LS1000



LS2000



Centry



SIP Gateway(s)

ToolVox XS
(Hardware
Appliance)



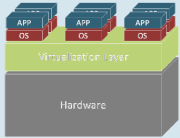
End user configures &
manages the system
(support hours available for
CB to config/manage)



Installed on end
user's network



ToolVox XV
(Software)



End user configures &
manages the system
(support hours available for
CB to config & manage)



Installed on end
user's network



Nebula
(Cloud)



Consumer Cloud = End user
configures/manages the system
(add-on option for CB to
config & manage)



Managed Cloud = Code Blue
Configures & Manages System



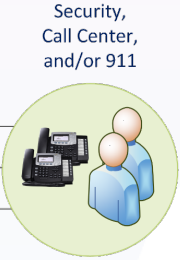
powered by aws



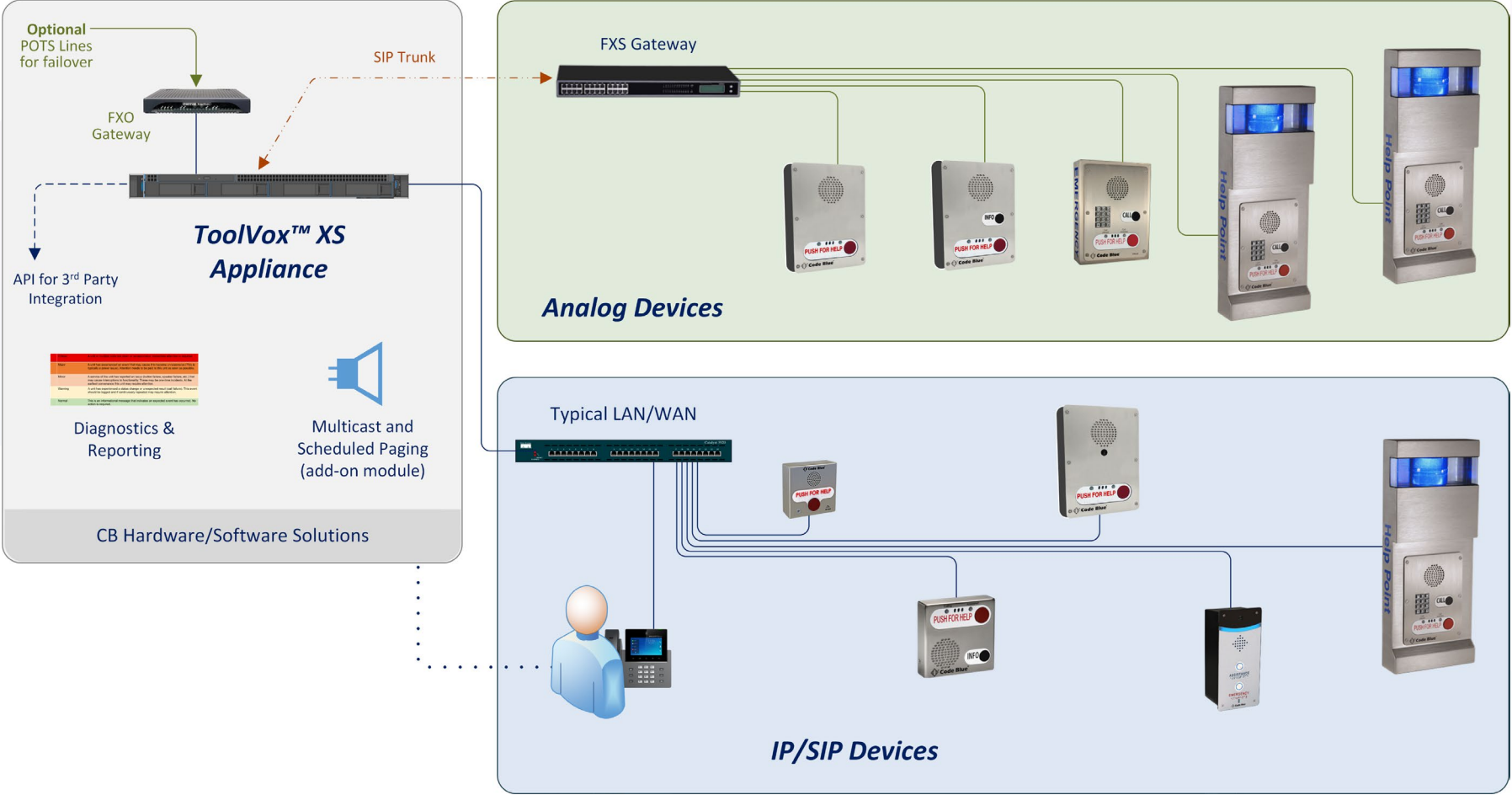
VPN
Router



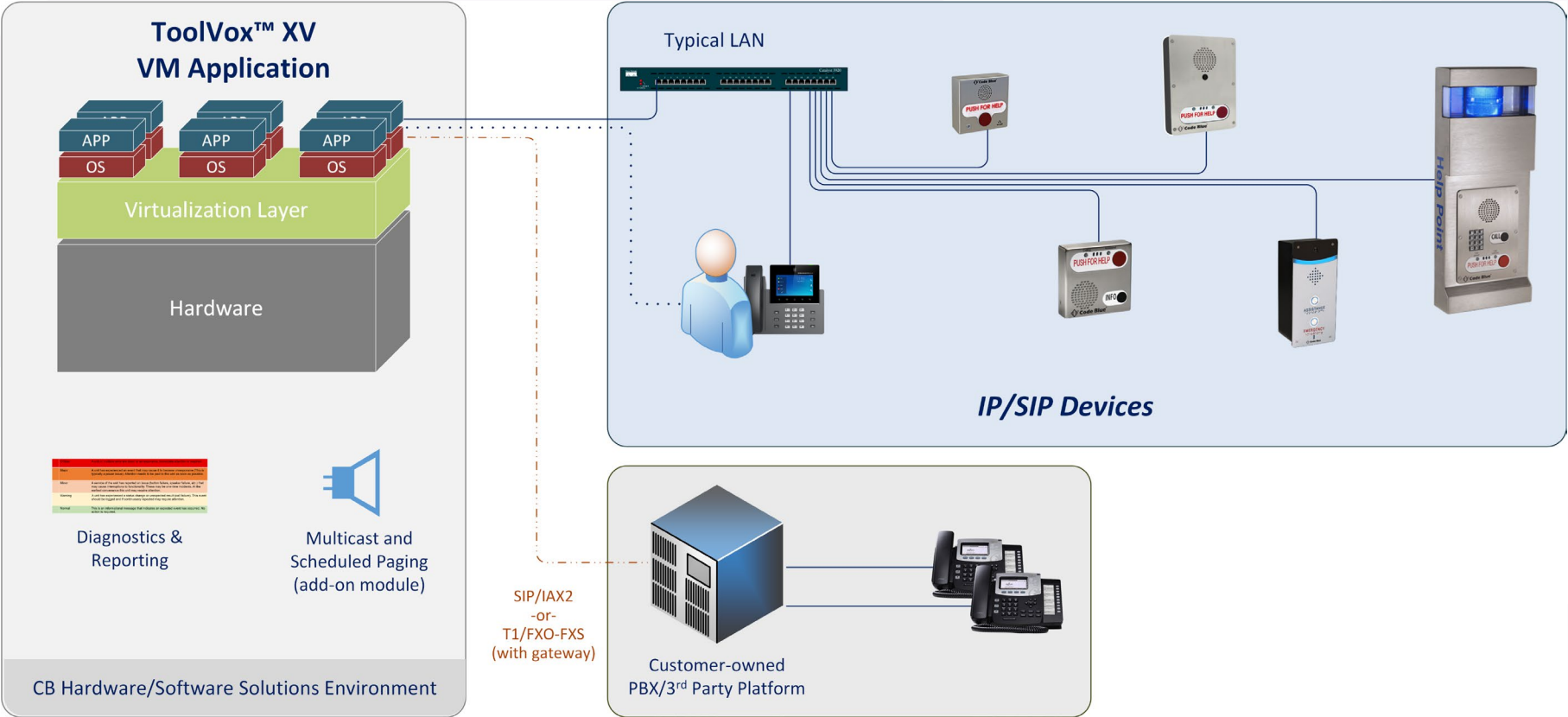
VPN
Router



Platform Options



Platform Options



Nebula Cloud

What is Nebula Cloud?

A cloud-based platform which combines products and services to connect remote units, enable call routing, and provide diagnostics and reporting.

- Cloud-based call routing
- Diagnostics & reporting
- Secure connections
- Managed services & support
- Pre-programmed units
- Multiple connection options
- Private Cloud options



Platform Options



Nebula Cloud

Nebula
Cloud



Why Nebula?

Features

Nebula Ecosystem

*Cellular Network: Features
& Benefits*

Cloud Options

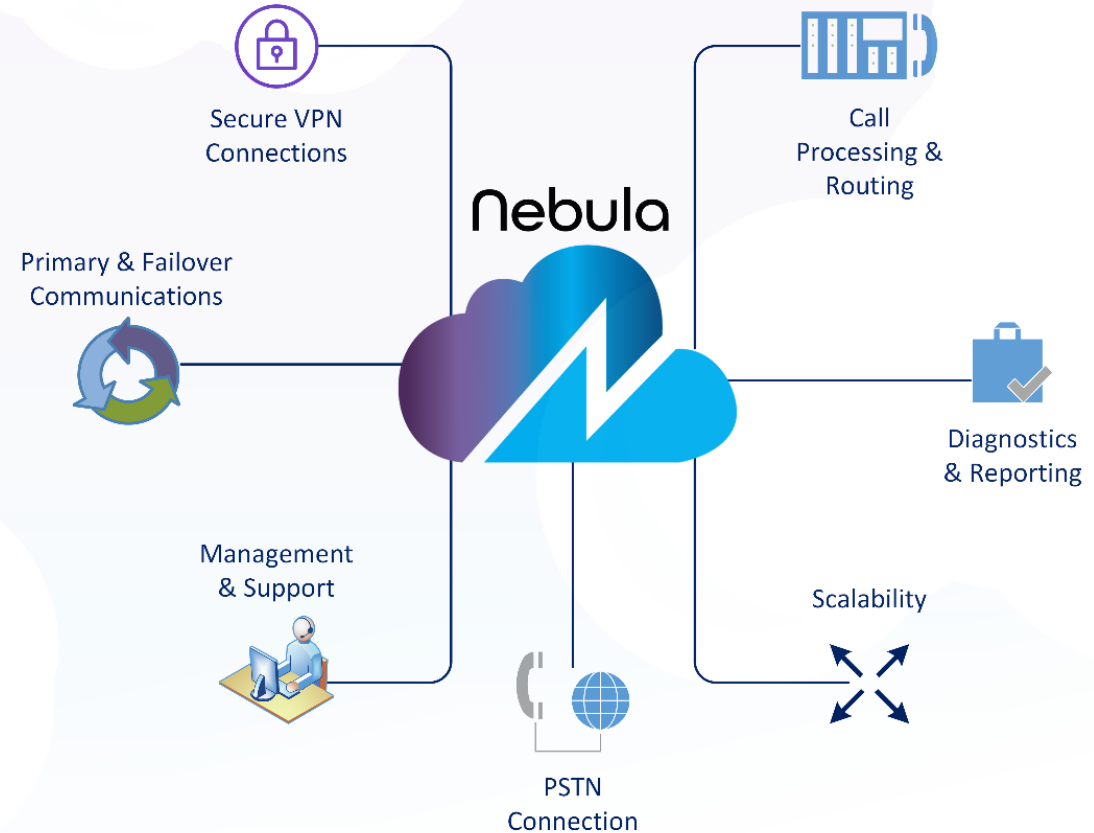
Nebula Cloud



Nebula Cloud

Why Cloud?

- Network security
- Cloud-hosted PBX platform
- Managed services provide updates and ongoing maintenance
- Automatic updates
- Call routing options (call redirect)
- Pre-configured devices
- Lower up-front cost
- Redundant connectivity
- Quick repair for cabling issues



Nebula Cloud



Nebula Cloud

Features

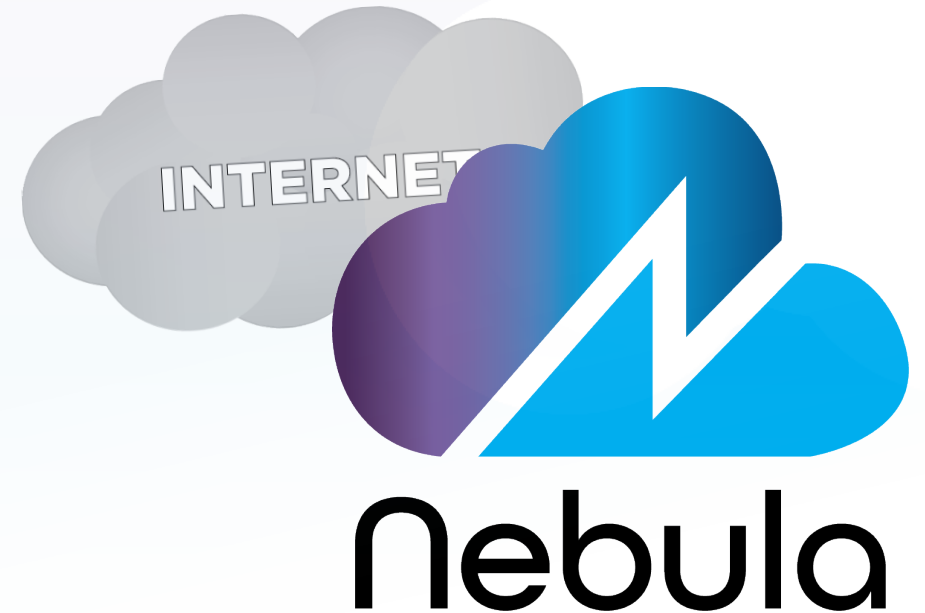
Scalability & Flexibility

- Multiple connection methods
- Cloud-based SIP registration
- Diagnostics
- DID/e911 support
- Secure connections
- Centralized system
- IP and analog device support

Systems Management

- Managed services
- Pre-configured units
- Superior performance, service and support
- Custom engineering

it's a **network** off your network



Nebula Cloud



Nebula Cloud

Ecosystem

Customizable Solution & Network Designs

Complete end-to-end system that utilizes alerting, managing, and responding technology.

Enhancing Customer Service

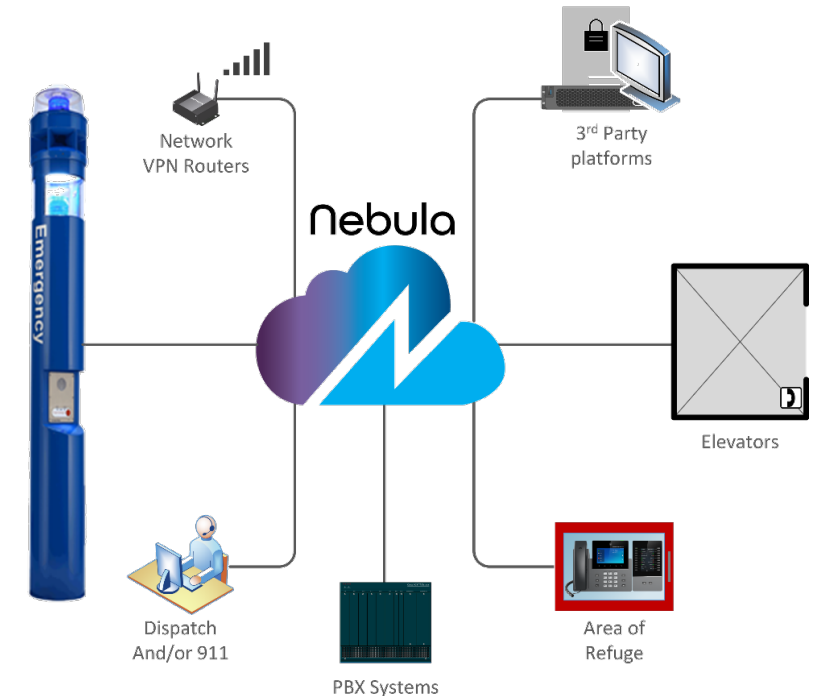
Offer onsite assistance in situations that are not potentially dangerous and may not require traditional police or 911 personnel.

Managed Cloud Platform

A network off your network. Calls, video, software and data - along with anything else you want - can be moved to a separate Nebula network for ultimate peace of mind.

Strengthening Security

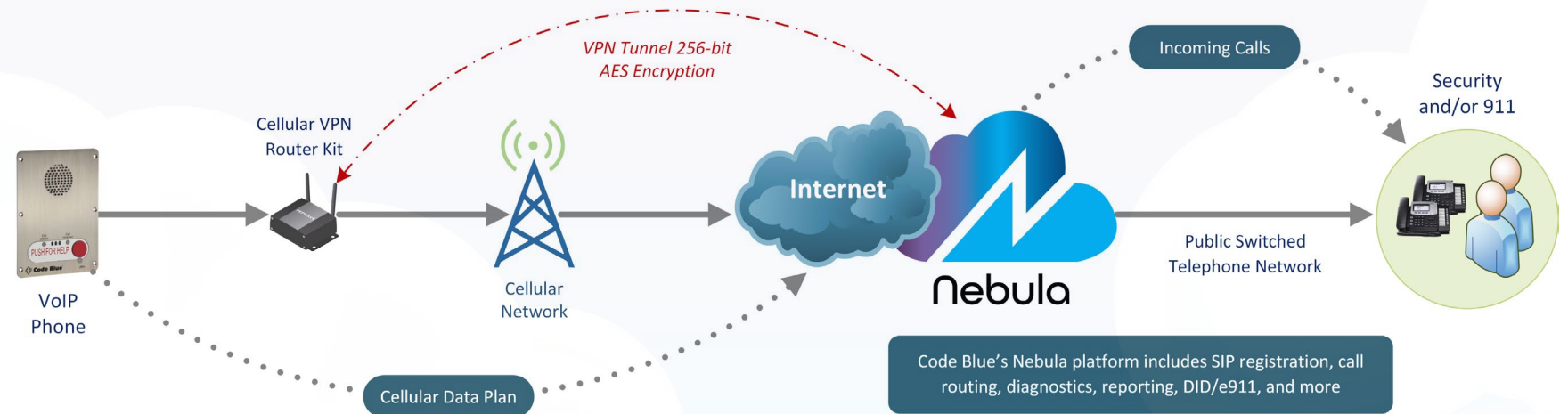
Designed to provide a lifeline to request help and empower you to act quickly and intelligently before, during and after an incident.





Cellular Network

Features & Benefits



- Ruggedized 4G LTE or 5G router
- Failover capabilities
- Redundant SIM slots
- Cellular and GPS antennas

- Wi-Fi interface
- Cloud management, monitoring and reporting
- Most cellular service providers supported

Nebula Cloud



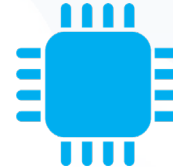
Cellular Network

Features & Benefits



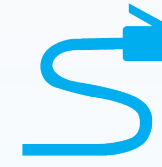
IP Connections= Supervision

Constant communication between VoIP endpoint and SIP platform provides the ability to perform diagnostics and supervision.



Failover & Redundancy

Supports multiple 4G LTE SIM cards, wired networks, Wi-Fi (802.11b/g/n), or a combination.



Eliminate Cabling Needs

Available for areas where phone lines are not available or trenching costs are prohibitive.



Compatible with Multiple Platforms

Cellular IP provides the transport required to pair with our Nebula cloud and/or Private cloud services.

Nebula Cloud



Managed/Consumer Cloud

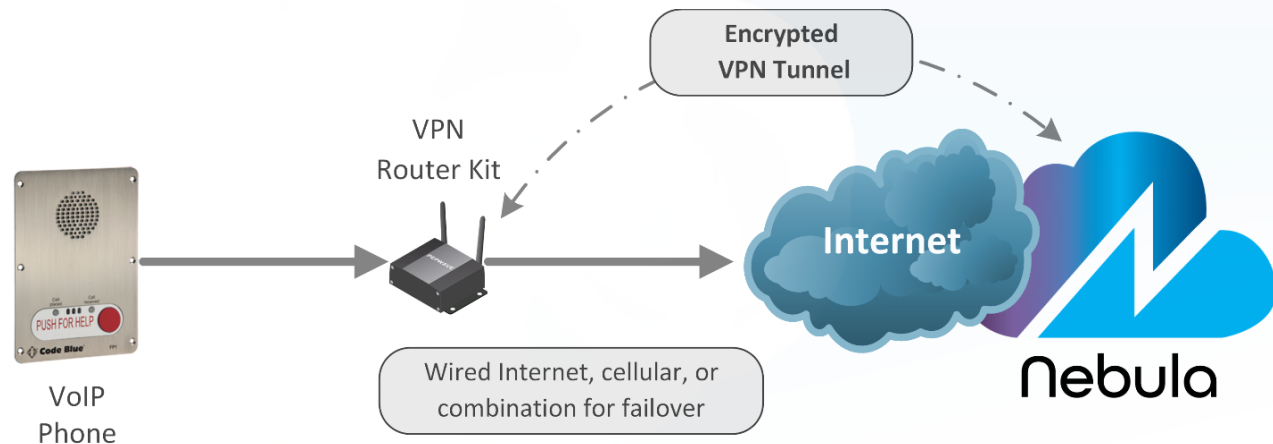
Recommended Cloud Options

Managed Cloud

- ✓ SIP registration, diagnostics and call routing
- ✓ **Service sold per extension**
- ✓ **Code Blue** manages Blue Alert® applications

Consumer Cloud

- ✓ SIP registration, diagnostics and call routing
- ✓ **Recommended for 20+ extensions** or End user wants full control over platform
- ✓ **Customer and/or Code Blue** manages Blue Alert® applications



Cloud packages provide a remote Nebula™ cloud network for storing Blue Alert® software **off your local network.**

Nebula Cloud



Private Cloud

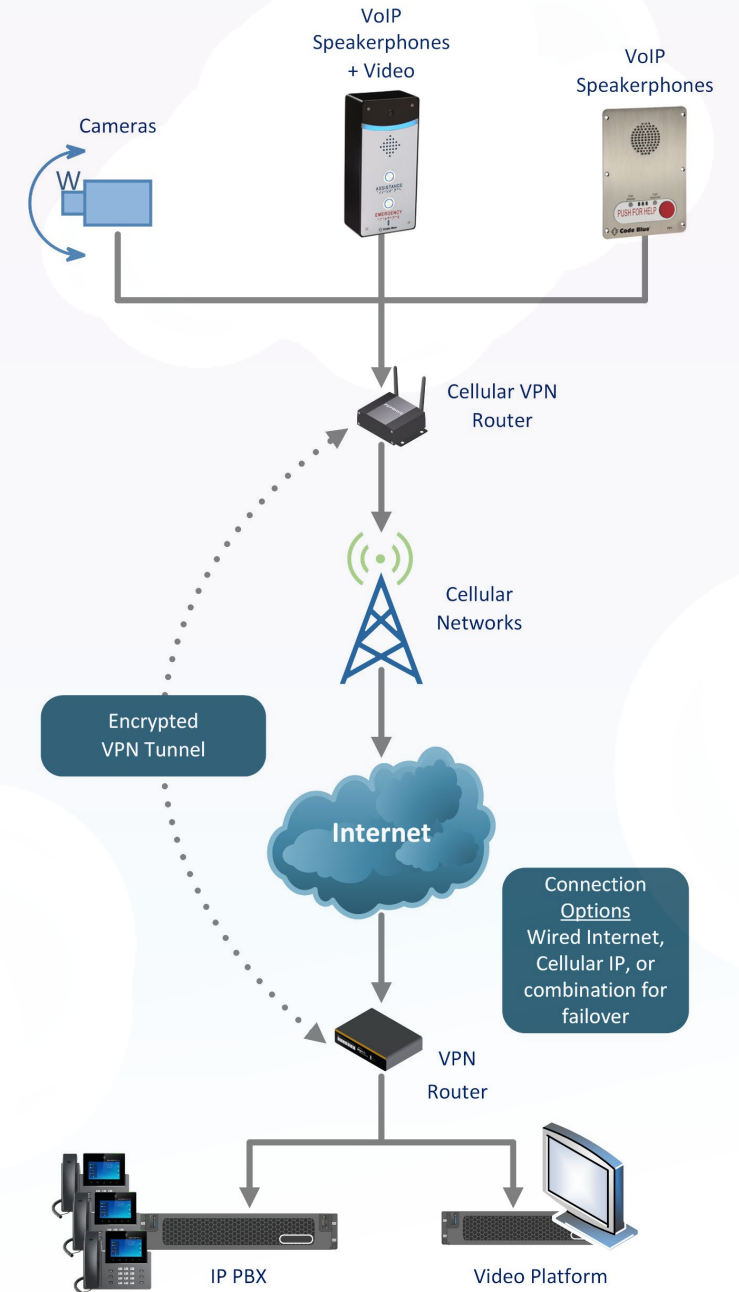
Local network/Customer managed

Connection Options

- LAN, WAN, Wi-Fi and 4G LTE/5G connectivity
- Secure connections
- Ability to connect multiple locations to a centralized system
- IP and analog device support
- Bandwidth bonding

Systems Management

- Control over voice and data transmission
- Hardware configuration assistance
- Superior performance, service and support
- Optional managed services
- Custom engineering and technical support

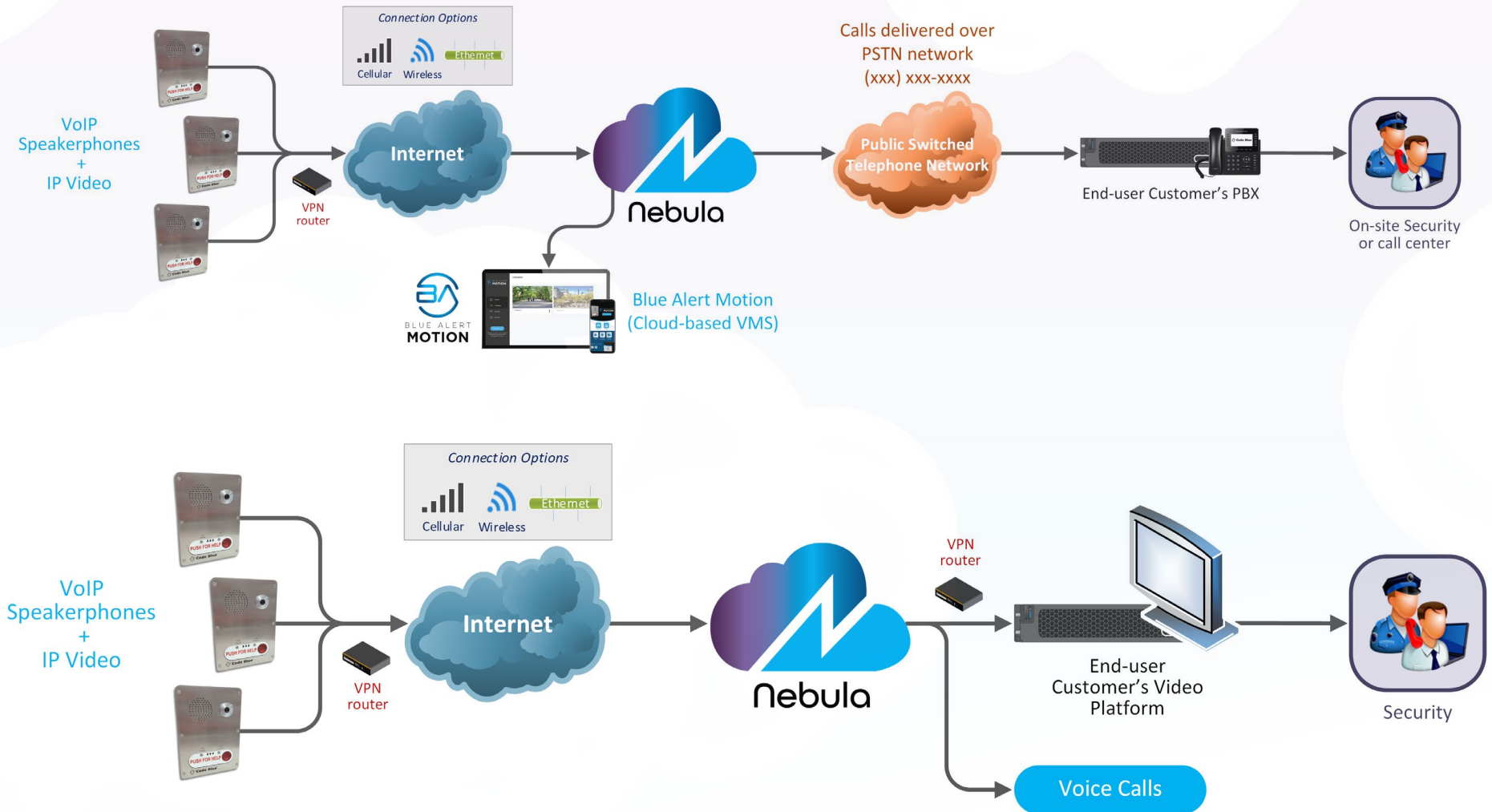


Nebula Cloud



Hybrid Cloud

Cloud-based Video Streaming



AOR



Area of Refuge Applications

AOR Common Designs

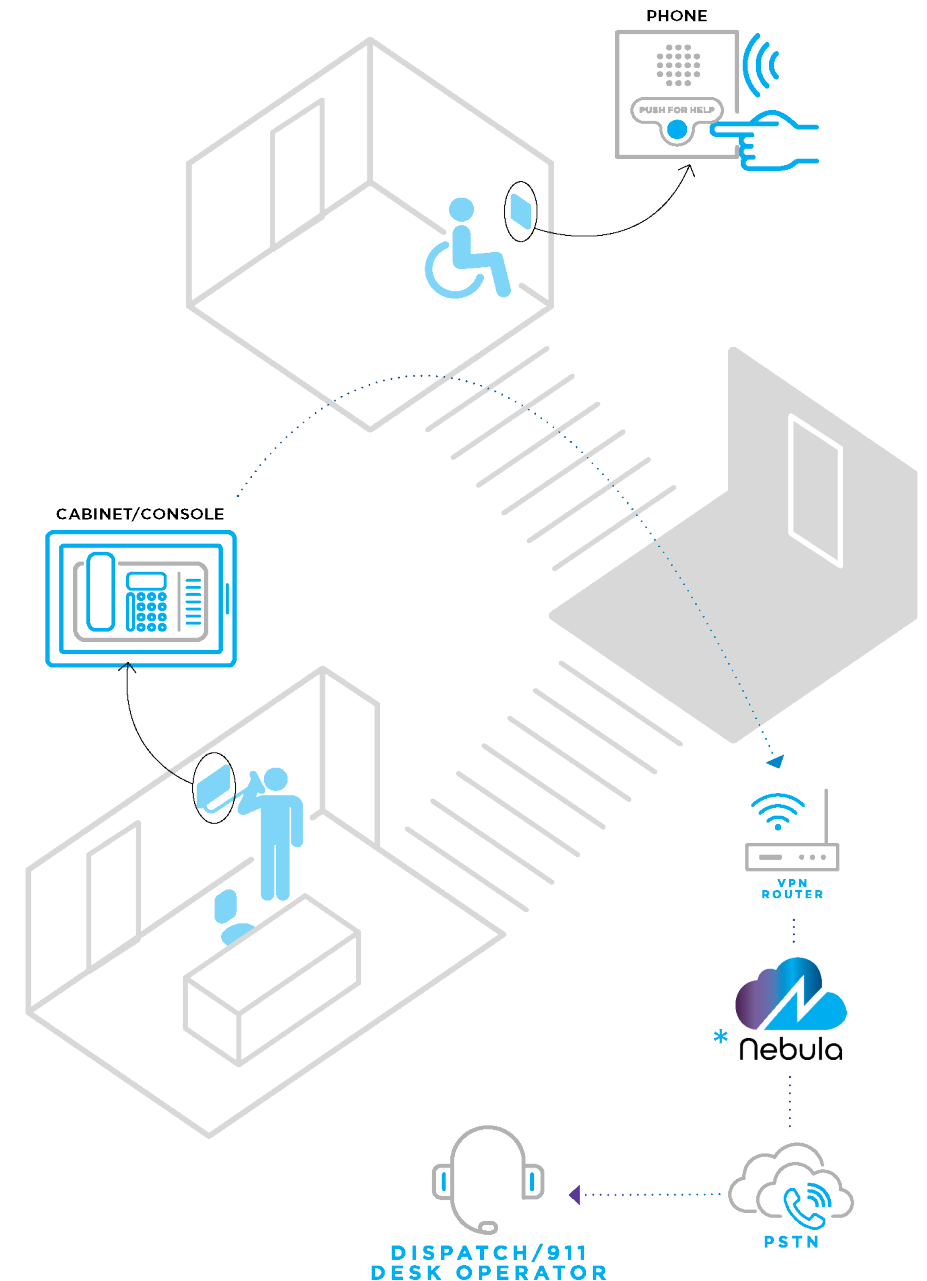
Server +
Analog

Server +
VoIP

Nebula
Cloud

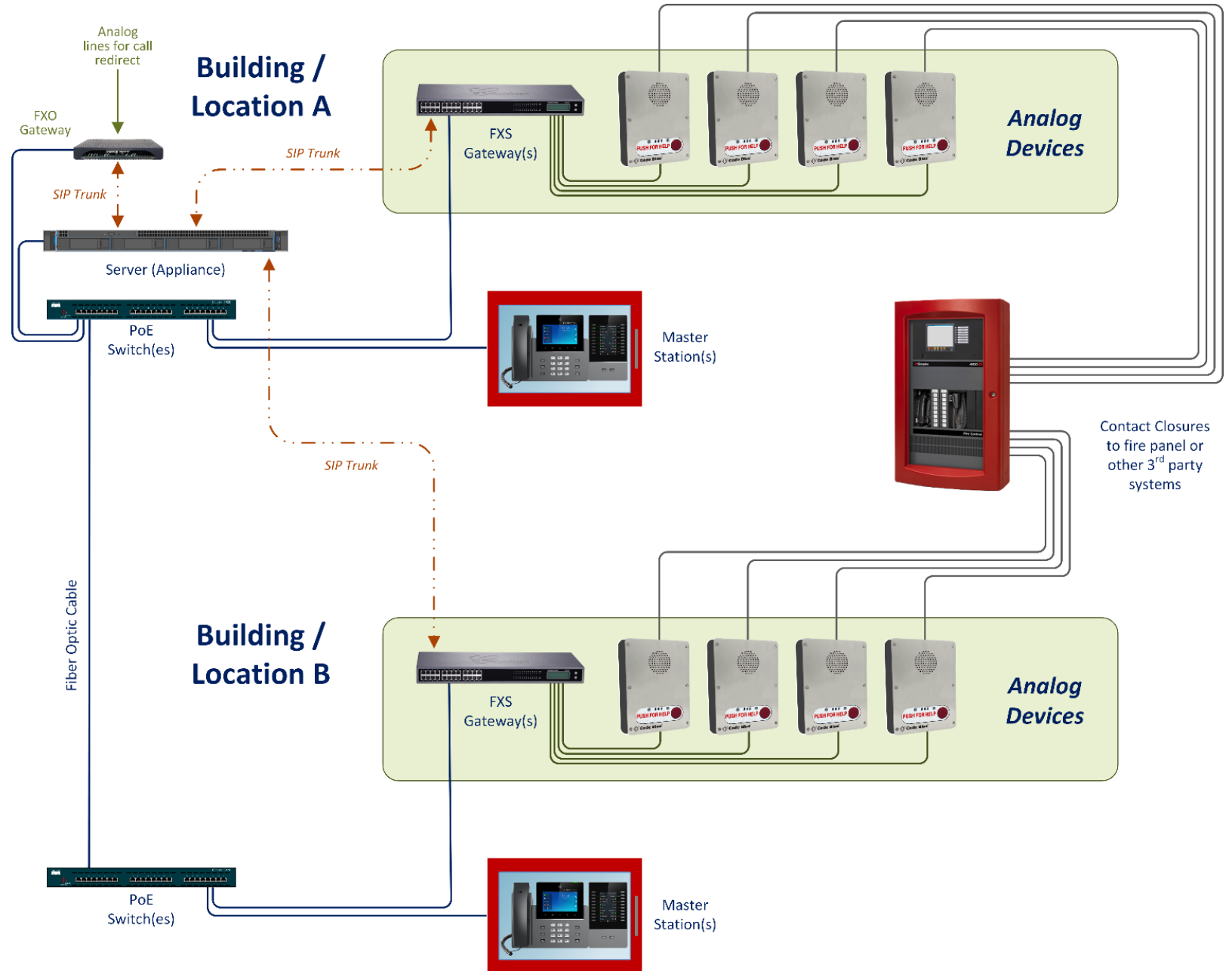
Need 24hr assistance?

Utilize our ***Nebula Cloud** as a call redirect platform for unanswered calls.



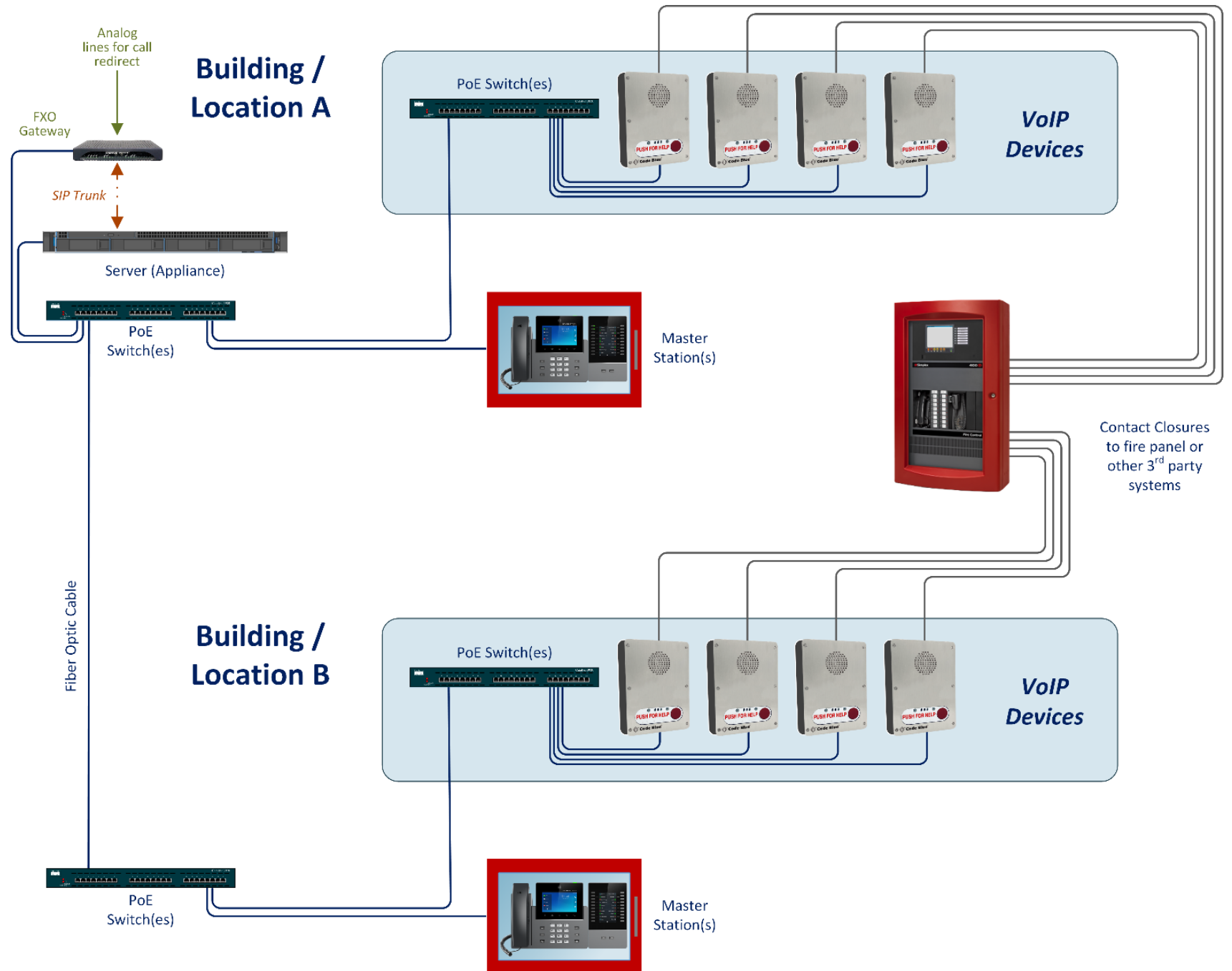
AOR Common Designs

Server
+
Analog Phones

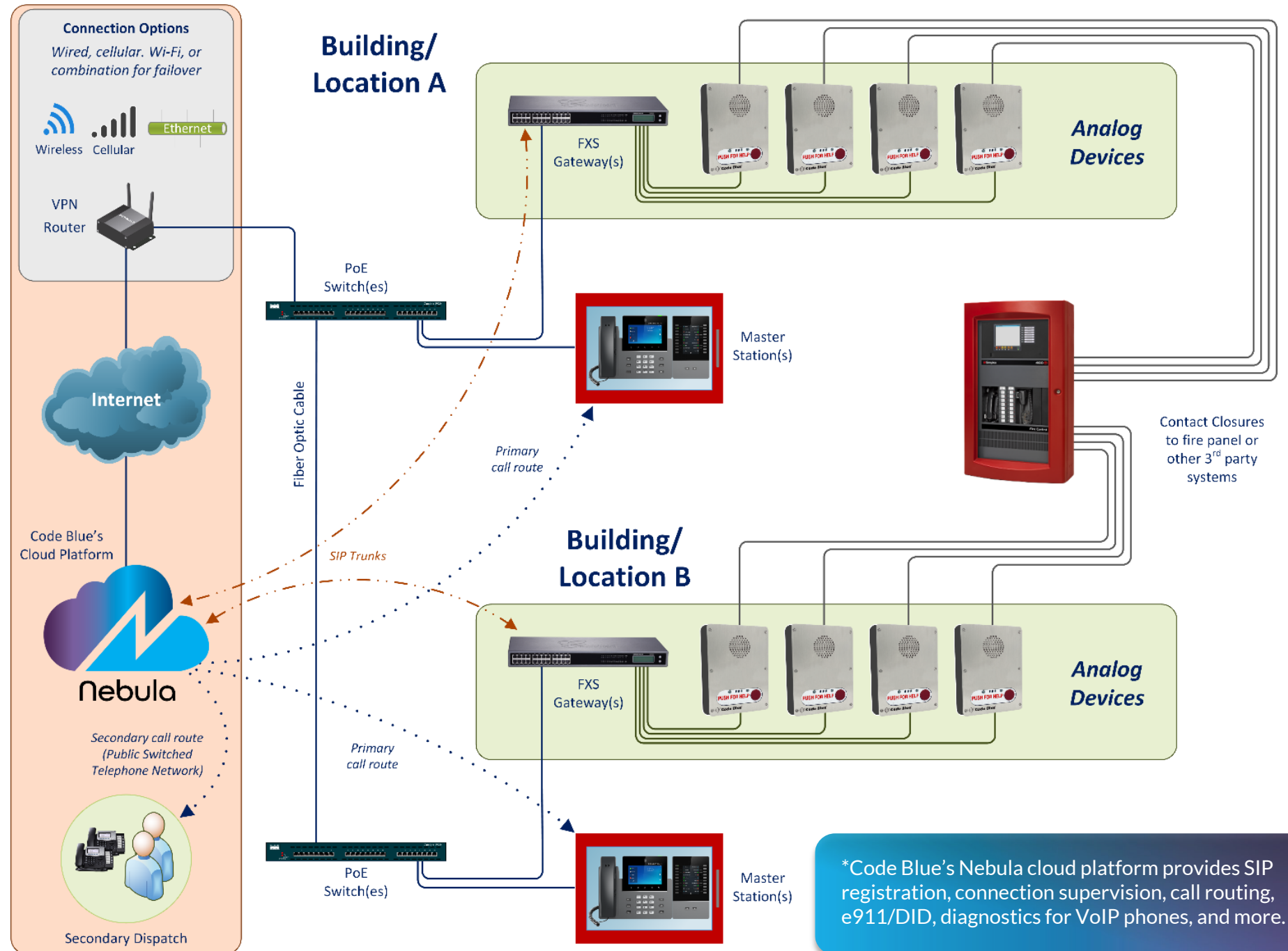


AOR Common Designs

Server
+
VoIP Phones



AOR Common Designs



*Code Blue's Nebula cloud platform provides SIP registration, connection supervision, call routing, e911/DID, diagnostics for VoIP phones, and more.

Elevator Connect



Elevator Connect

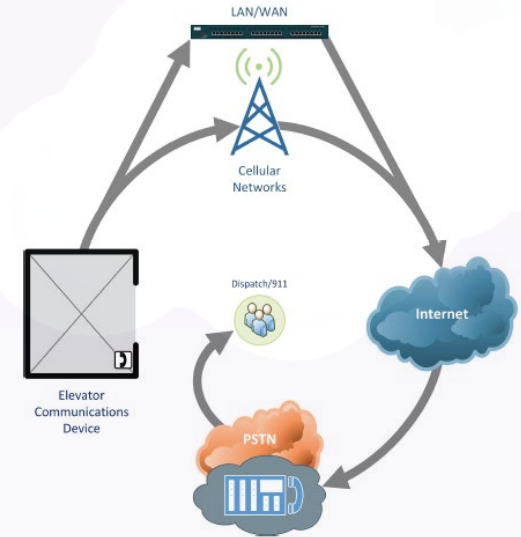
Provide call routing and diagnostics for emergency communication devices installed in elevators.

Connection Options

- LAN, WAN, Wi-Fi and 4G LTE connectivity
- Multiple SIM slots and cellular carriers supported
- Cloud-based SIP registration
- Diagnostics, monitoring and reporting
- DID/e911 support
- Secure connections
- IP and analog device support

Systems Management

- Managed services
- Pre-configured units
- Superior performance, service and support
- Custom engineering
- Ruggedized, industrial grade hardware



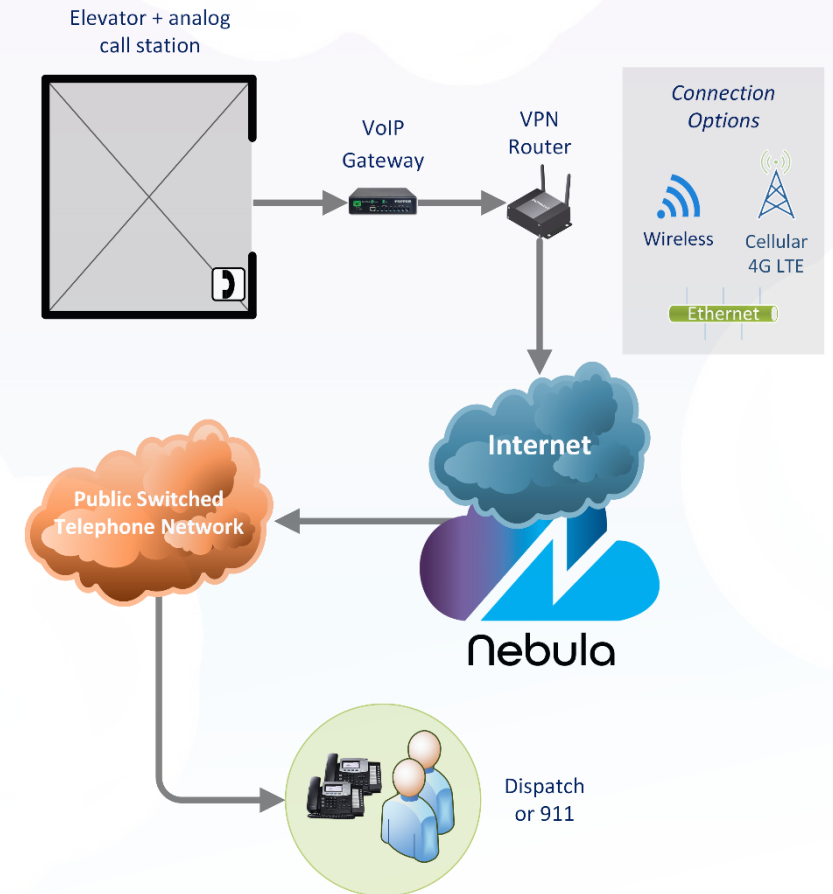
Elevator Connect



Elevator Connect

Benefits

- ✓ **Connection Flexibility**
Supports wired, wireless or a combination of both.
- ✓ **Futureproof**
Receive the most up to date software releases.
- ✓ **Landline Alternative**
Supports both IP and Analog phones.
- ✓ **Ease of Installation**
Our managed cloud products come pre-configured and ready for deployment.



Design the right Solution

Code Blue is here to help. We can provide a variety of tools to aid your design process.

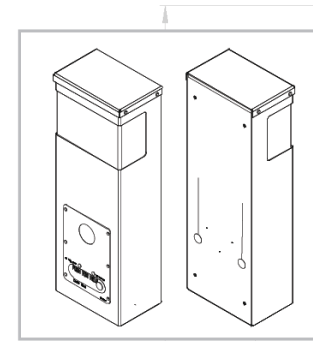
codeblue.com/resources

Project Design Resources

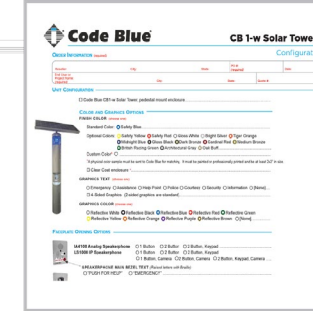


Don't see what you are looking for?

Contact us today and we can answer your questions and even provide a demo of our solutions.



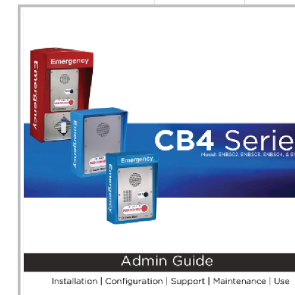
Drawings



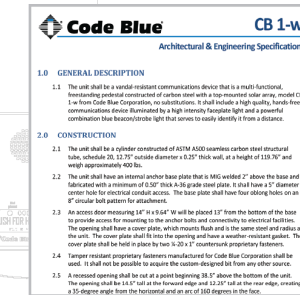
Configurators



Product Sheets



Guides



Specifications



Videos

39.14

14.00

10.94

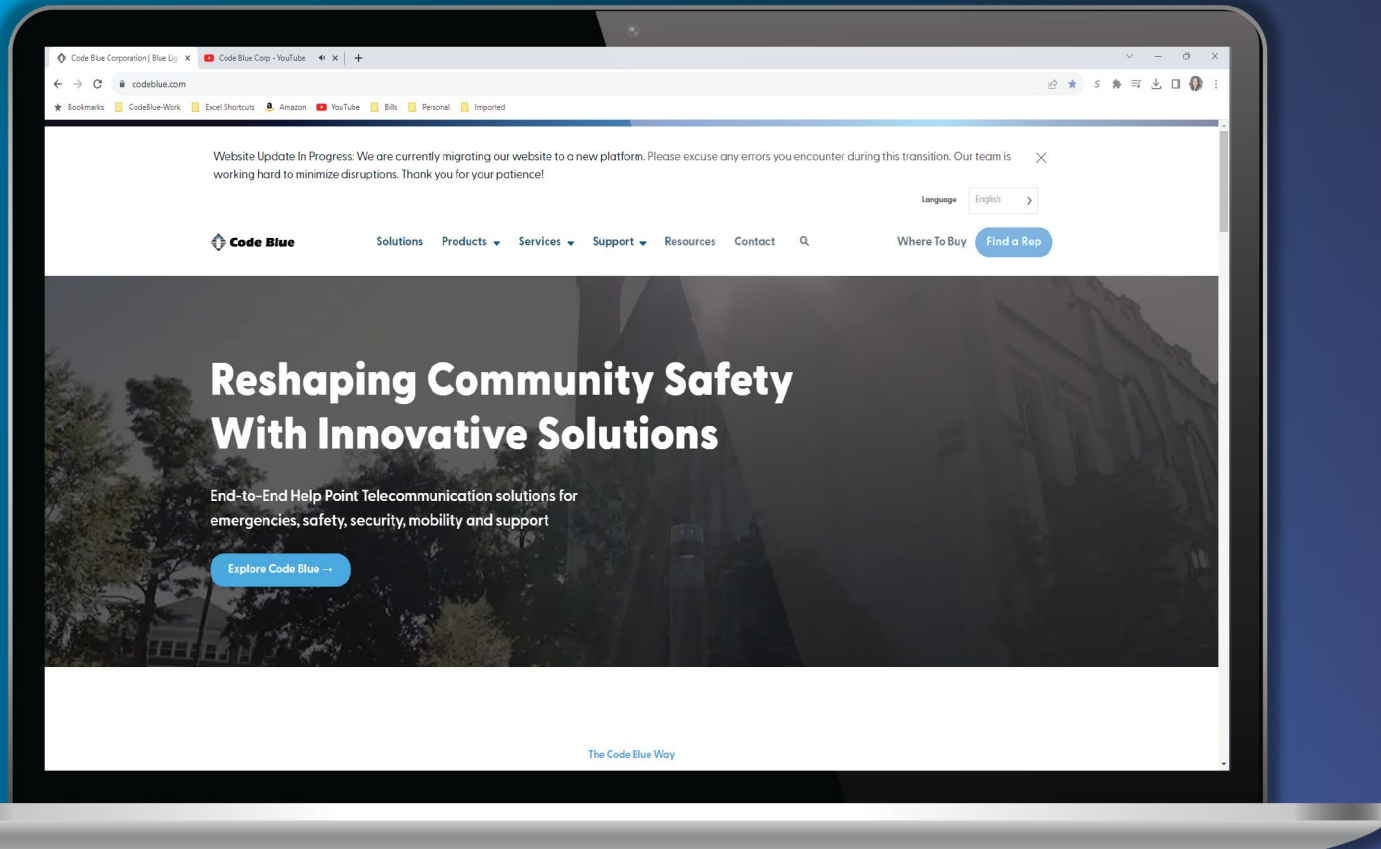
2.00

Questions?



Back to
Main Menu

Visit our new Website!



Notable Links

[Support](#)

[Resources](#)

[Request a Quote](#)

[Find a Sales Rep](#)



Our Catalog has been updated!



Click image to view Catalog

